



ESCRITORIO
CLASSIC

Seguí los
pasos y armá
tu escritorio
Classic

「**Lote 5**」



#ExperienciaMosconi



ESCRITORIO CLASSIC



#ExperienciaMosconi

¿Qué herramientas necesito?



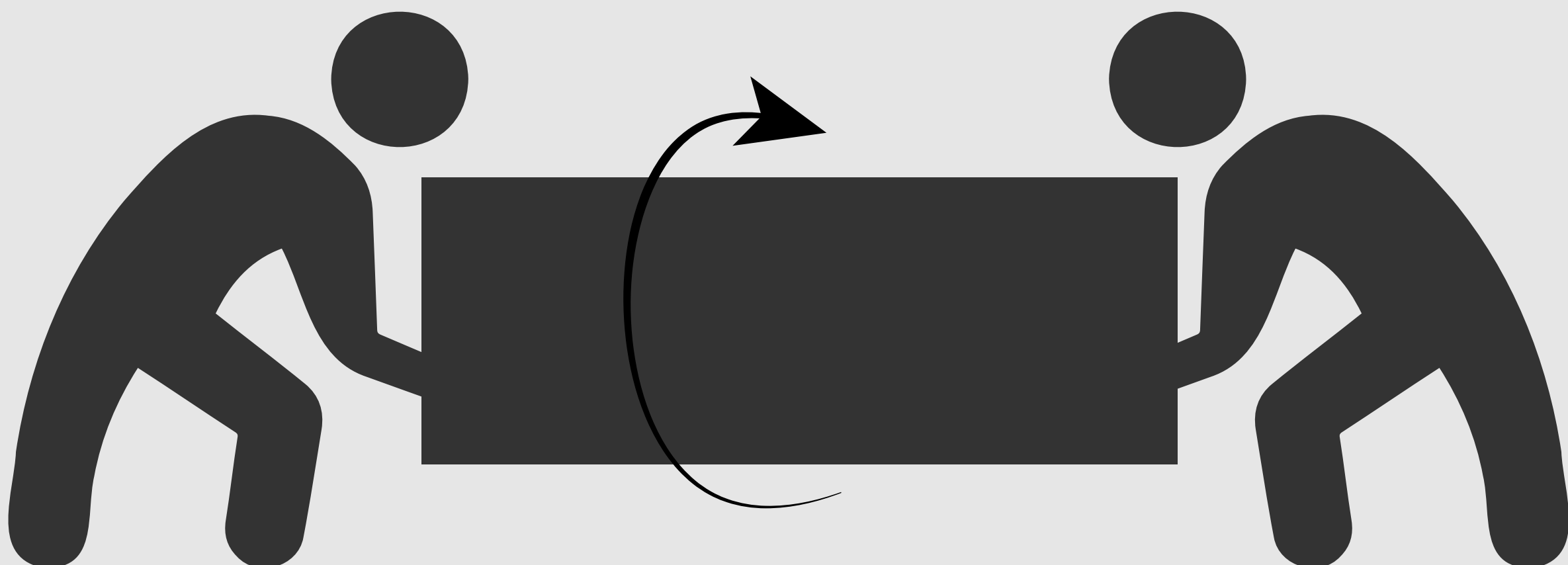
¡Recordá encolar las perforaciones donde van tarugos de madera!



Para cuidar las piezas, armá el escritorio sobre la caja.

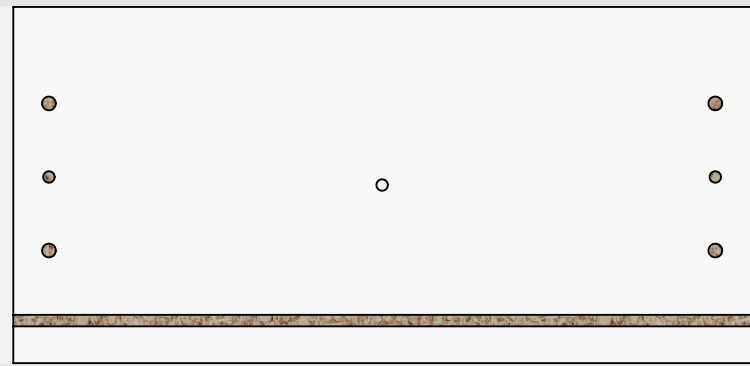


Al momento de rotar, recomendamos que sean dos personas.



#ExperienciaMosconi
www.mosconi.com.ar

Abrí la caja y posicioná las piezas en el piso.



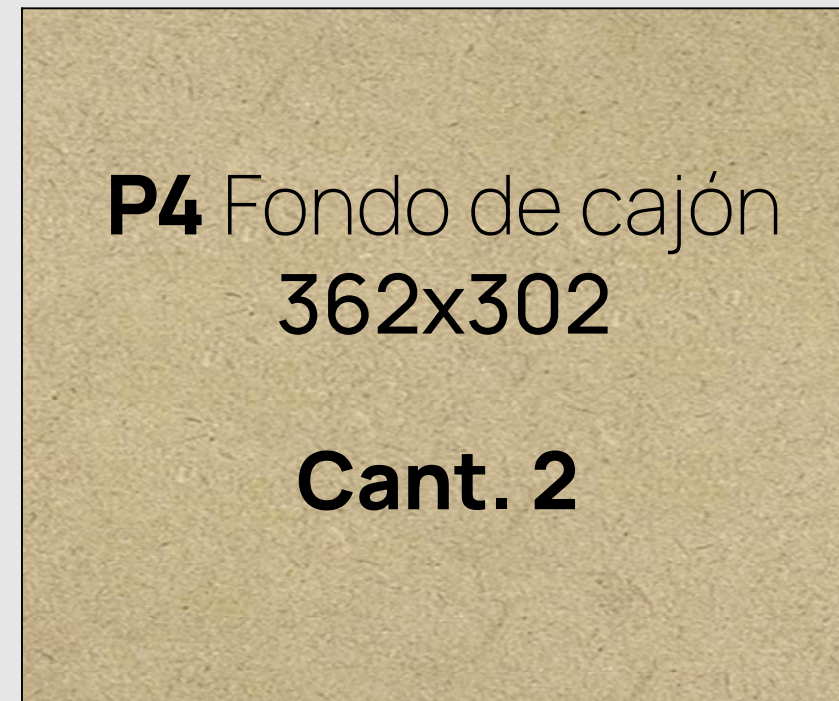
P1 Frente cajón
321x155
Cant. 2



P9 Faja cajón.
331x120
Cant. 1



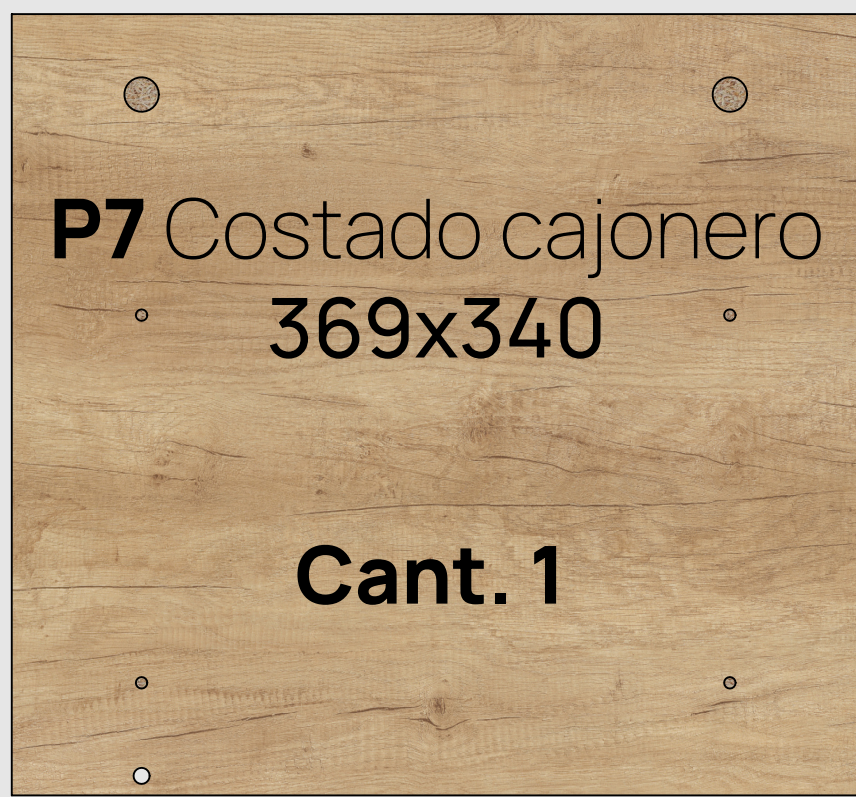
P2 Lateral de cajón
355x120
Cant. 4



P4 Fondo de cajón
362x302
Cant. 2



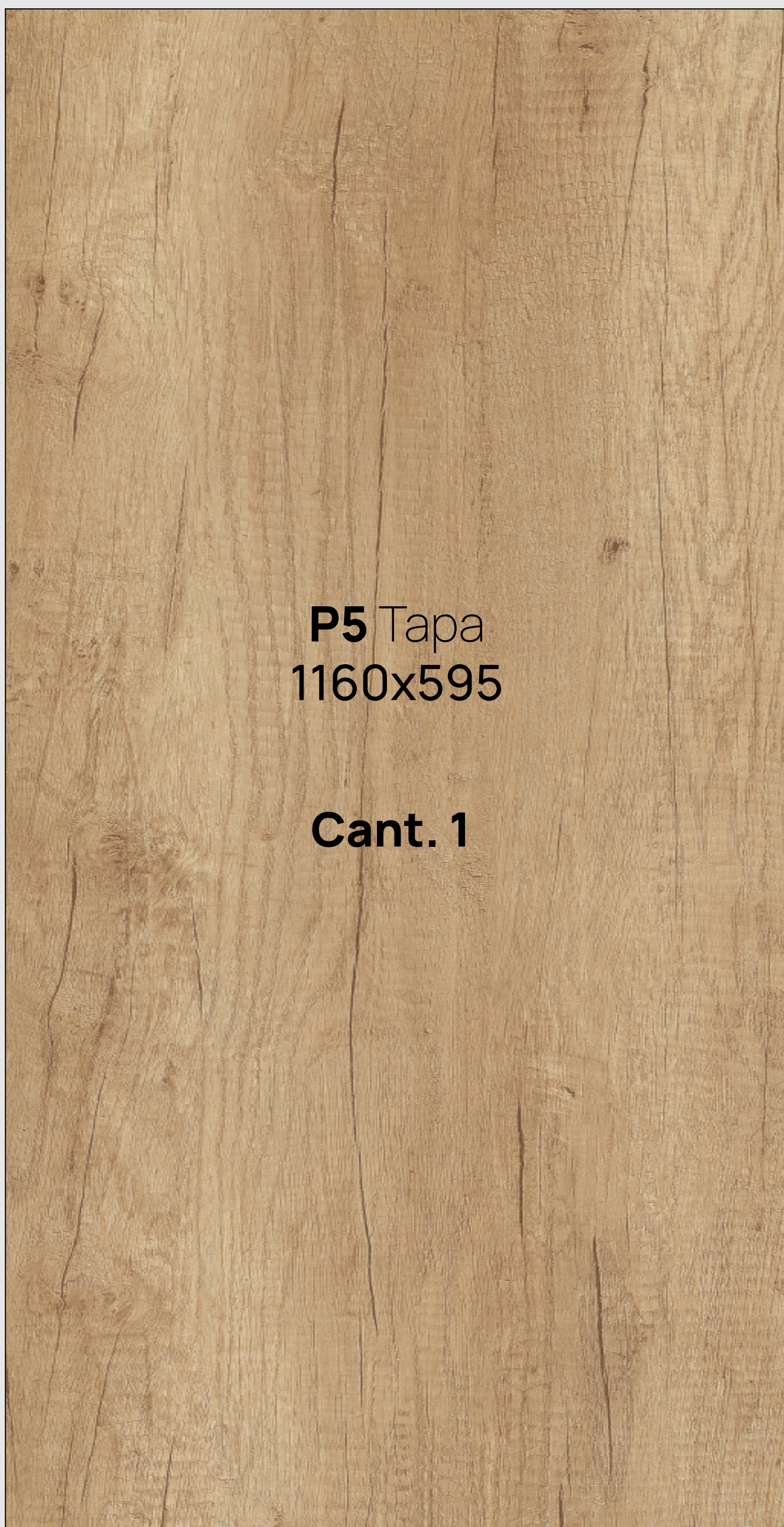
P3 Contrafrente
275x120
Cant. 2



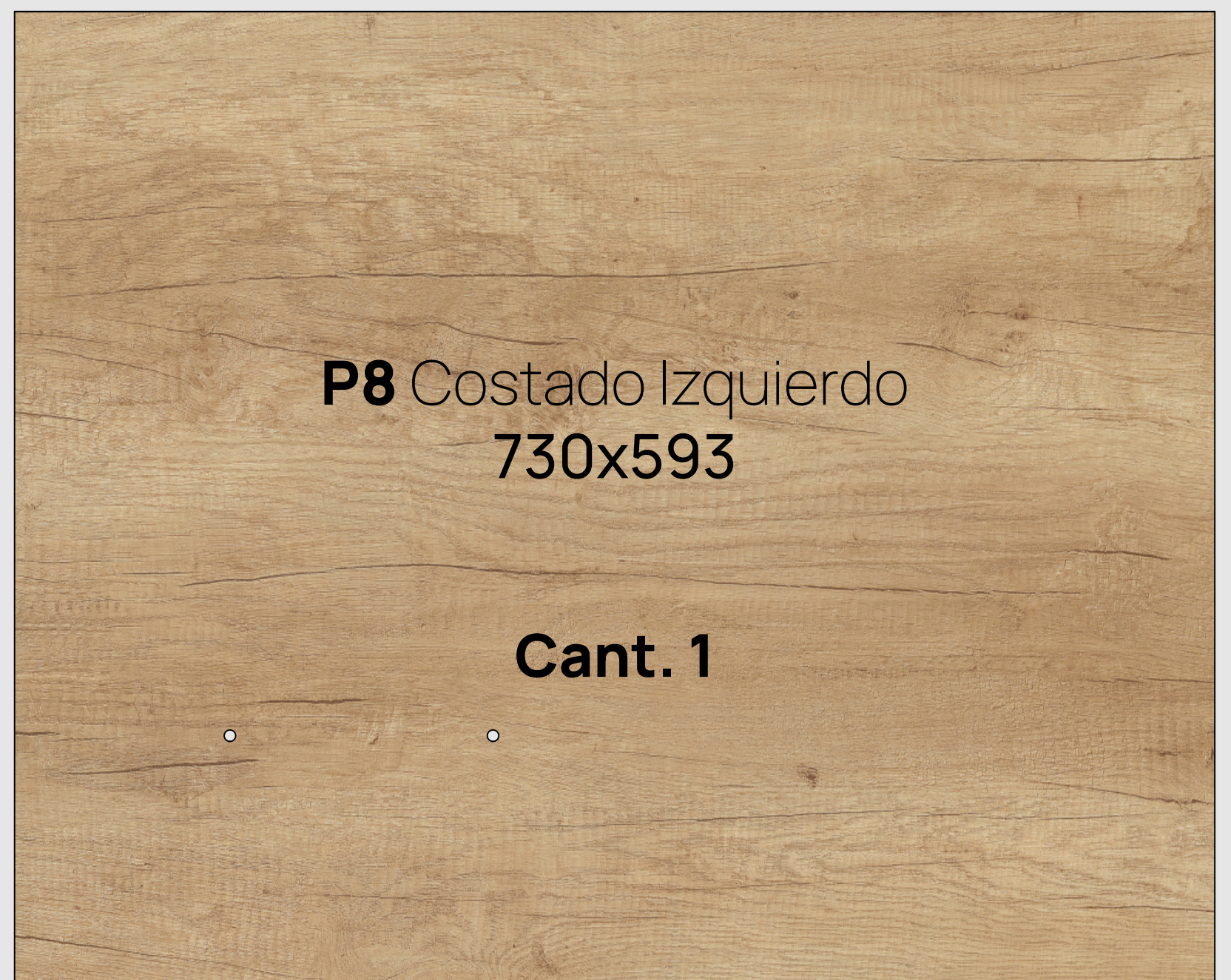
P7 Costado cajonero
369x340
Cant. 1



P6 Costado perf.
730x593
Cant. 1



P5 Tapa
1160x595
Cant. 1

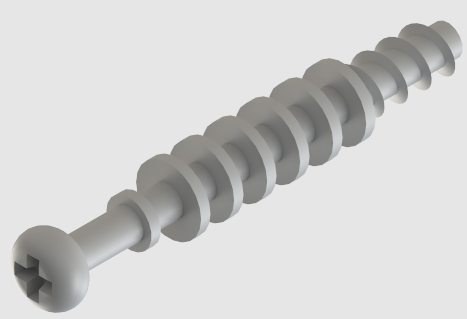


P8 Costado Izquierdo
730x593
Cant. 1



P10 Faja
1126x355
Cant. 1

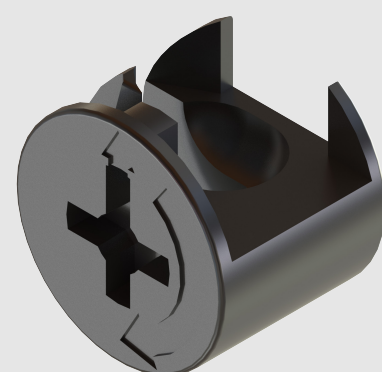
Herrajes



H1

Perno minifix

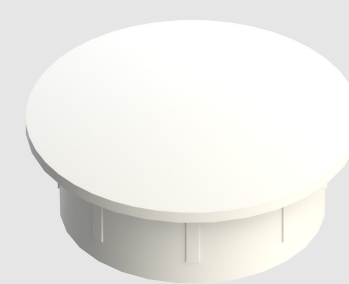
10 ud.



H2

Casolta minifix

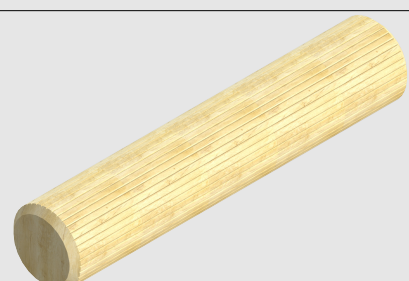
10 ud.



H3

Tapón plástico
6x30

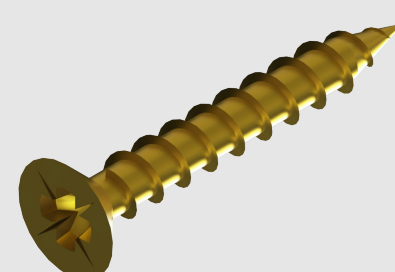
4 ud.



H4

Tarugo 6x30

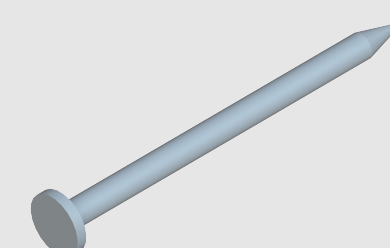
8 ud.



H5

Tornillo 3.5x30

12 ud.



H6

Clavo 8x20

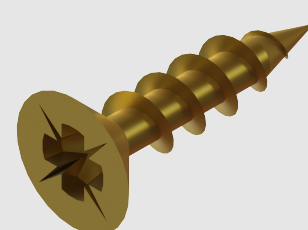
1 bolsa.



H7

Corredera Z
Cajón

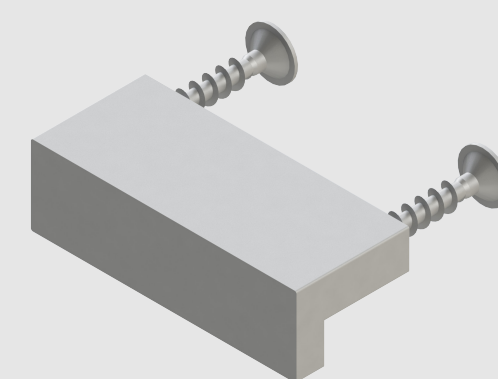
2 ud.



H8

Tornillo 3.5x15

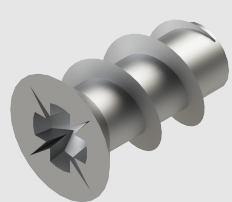
8 ud.



H9

Tirador
bruno ó bigfer

2 ud.



H10

Varianta 6x10

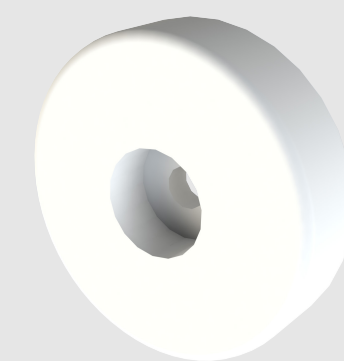
8 ud.



H11

Tornillo allen
6.3x50

6 ud.



H12

Base plástica

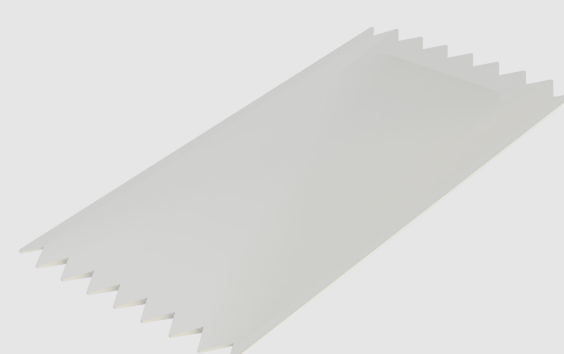
4 ud.



H13

Marca empresarial

1 ud.



H14

Cola vinilica

1 ud.



H15

Llave Allen

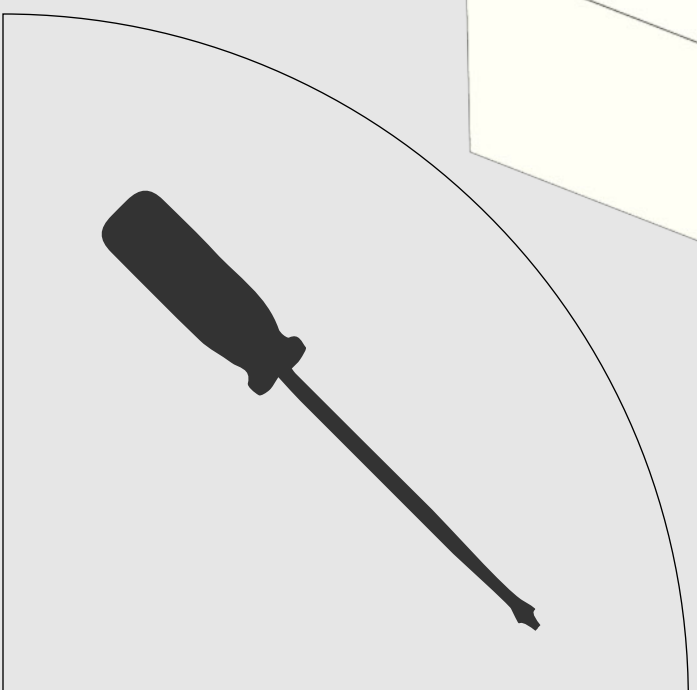
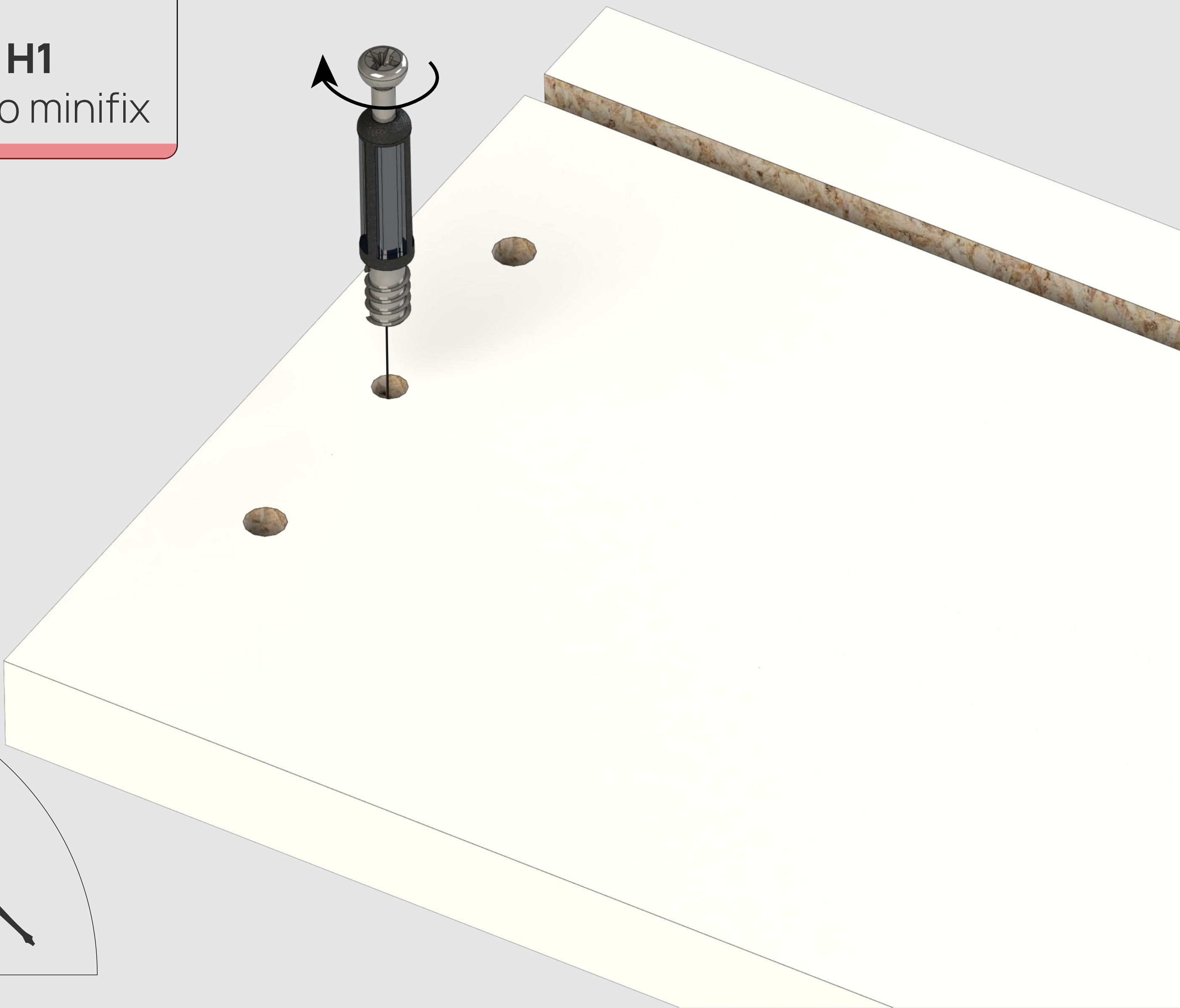
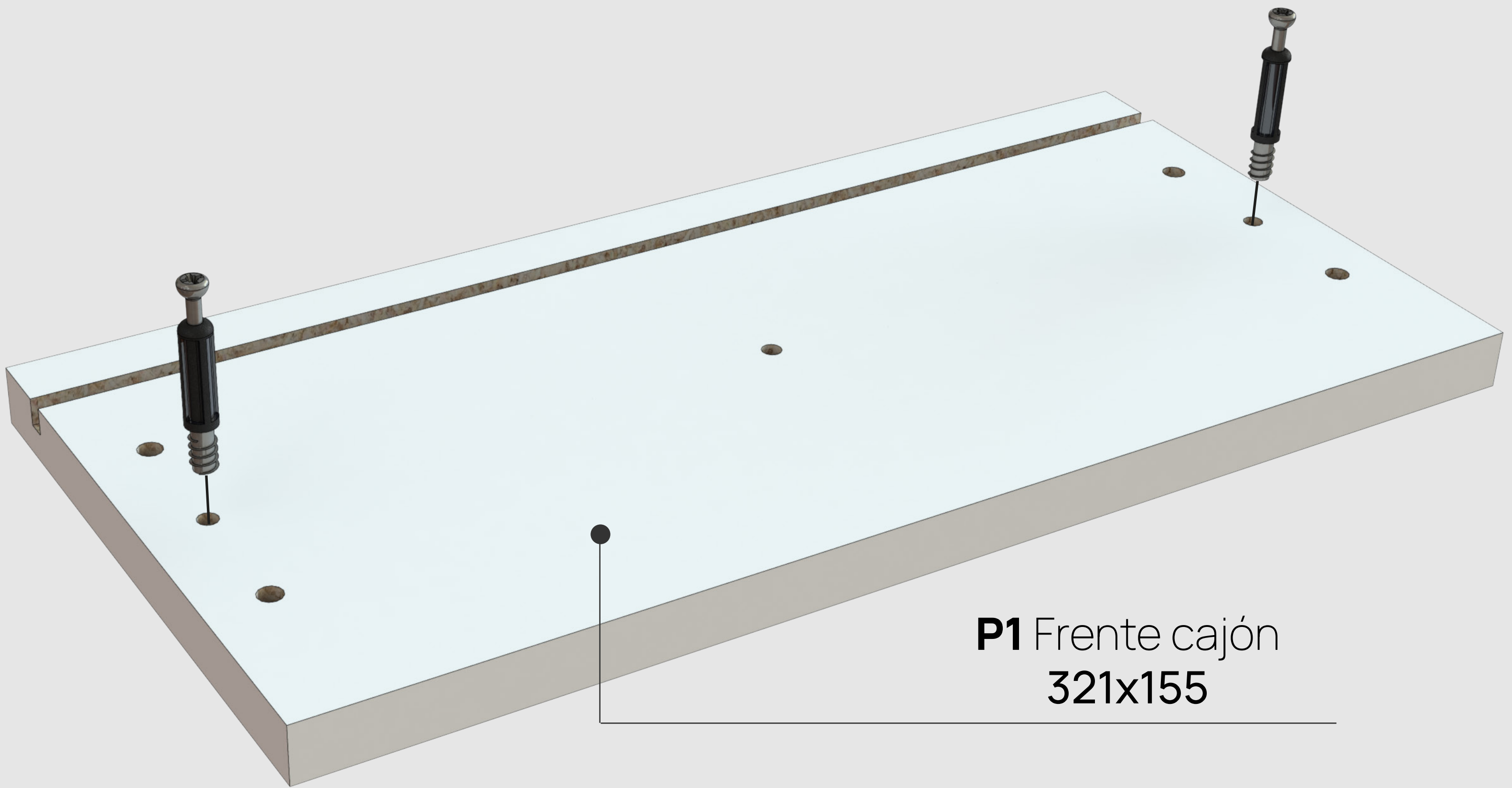
1 ud.



Armado de cajón

Colocar 2 pernos minifix en el frente del cajón. Ayudarse con un destornillador phillips.

01

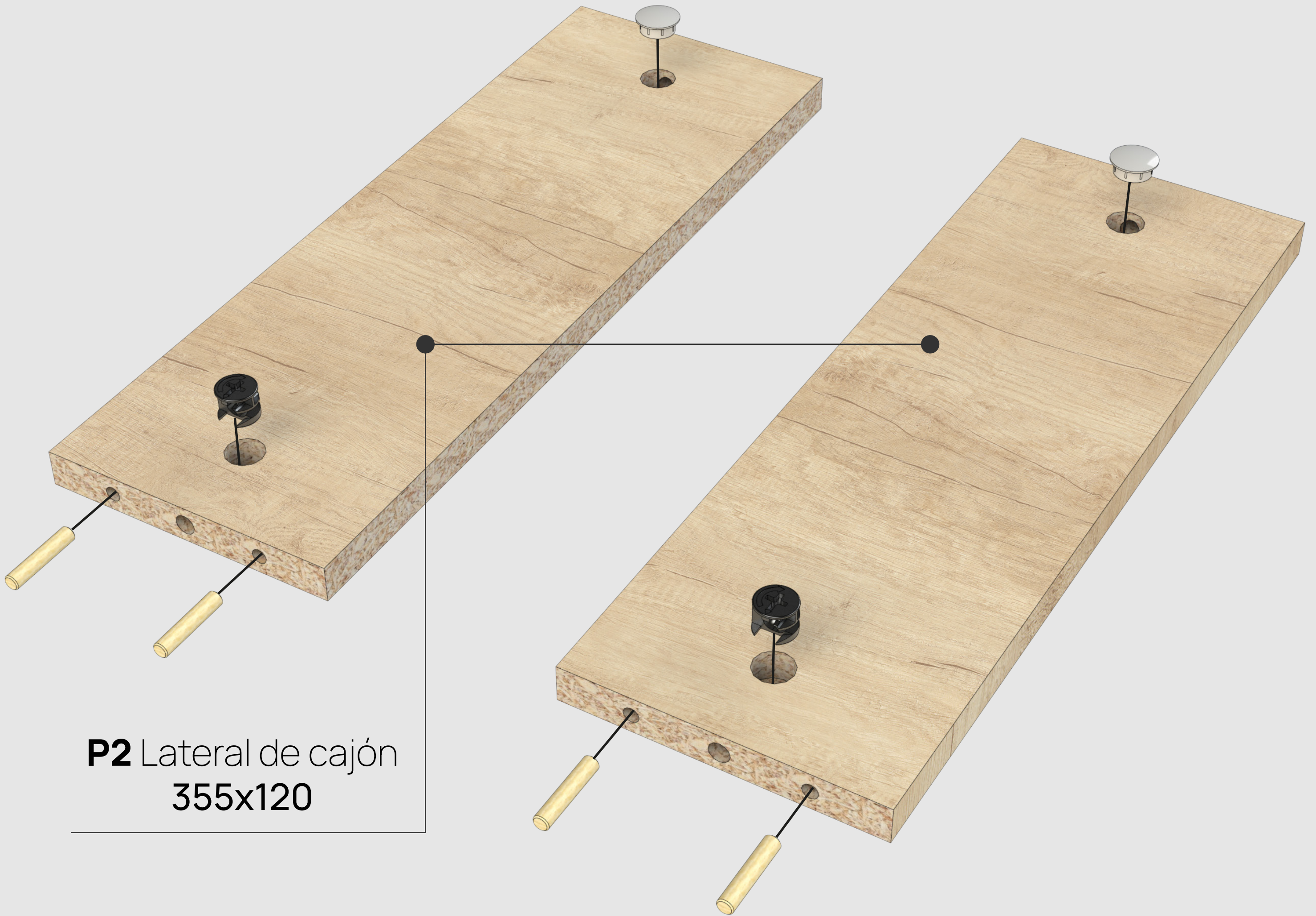


Armado de cajón

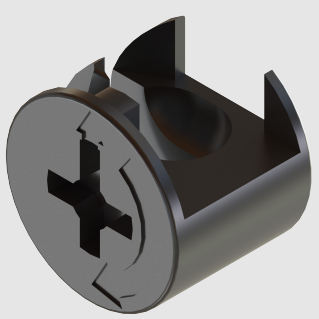
02

En los laterales de cajón, colocar tarugos, tapones plásticos y casoleta minifix.

Recordar encolar las perforaciones de los tarugos.

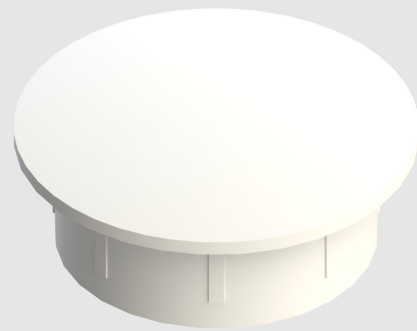


P2 Lateral de cajón
355x120



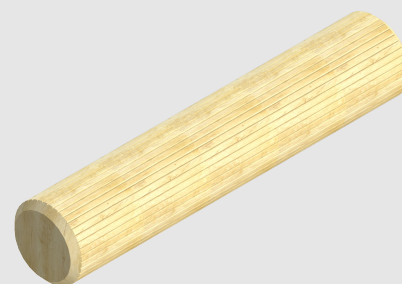
H2

Casolta minifix



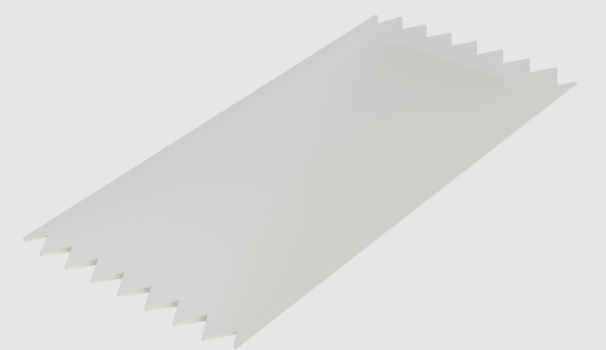
H3

Tapón plástico



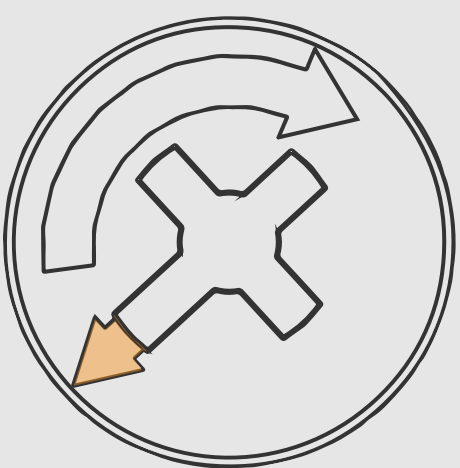
H4

Tarugo 6x30



H14

Cola vinilica



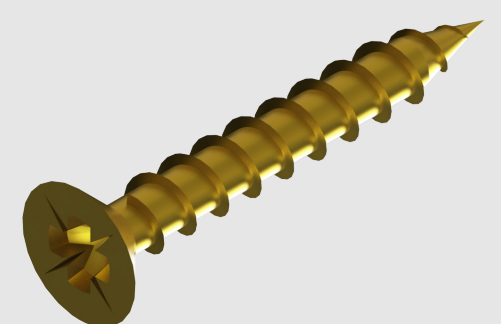
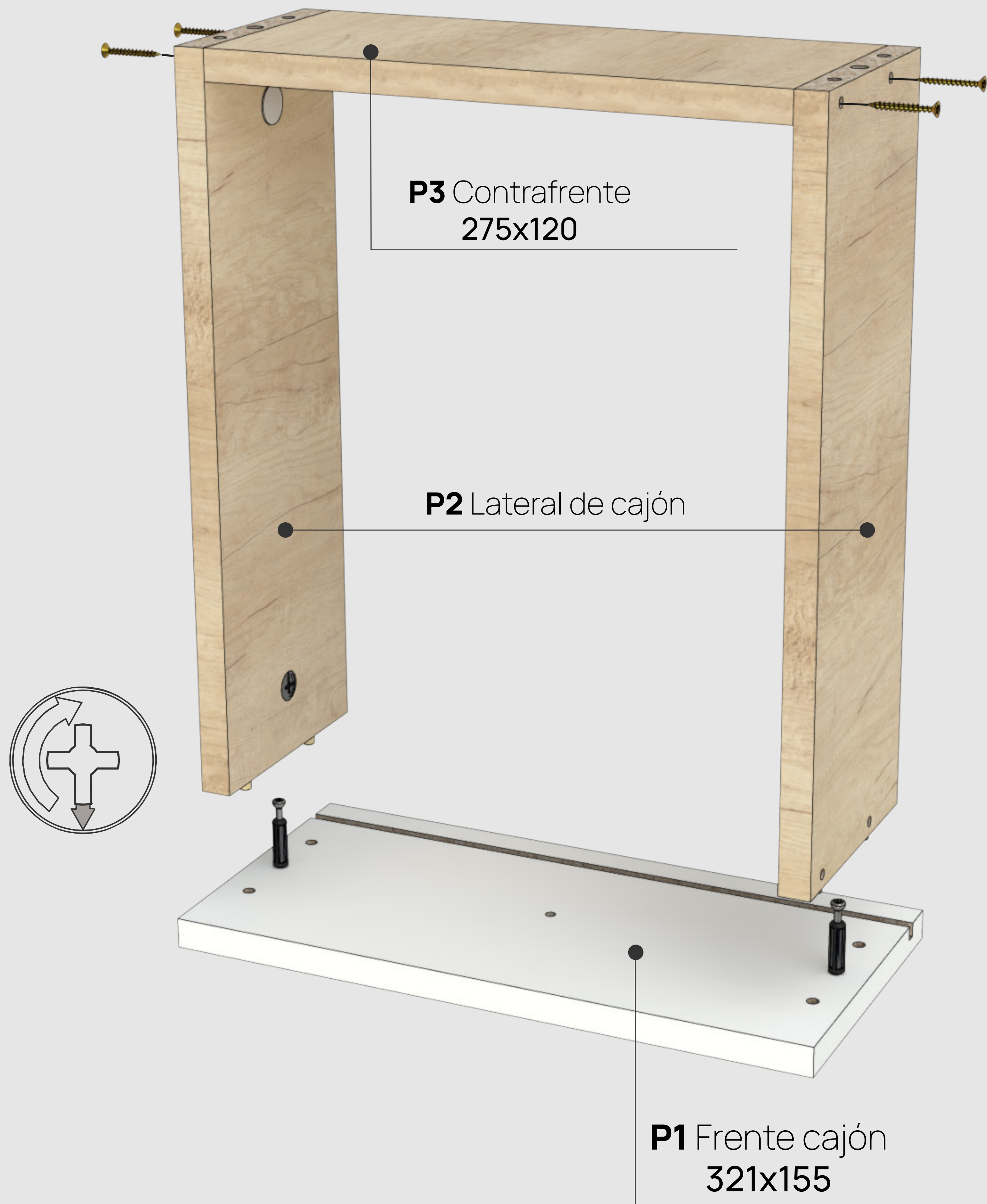
Colocar **casoleta minifix** con la flecha hacia apuntando hacia la perforación.



Armado de cajón

Vincular laterales de cajón con contrafrente y frente

03

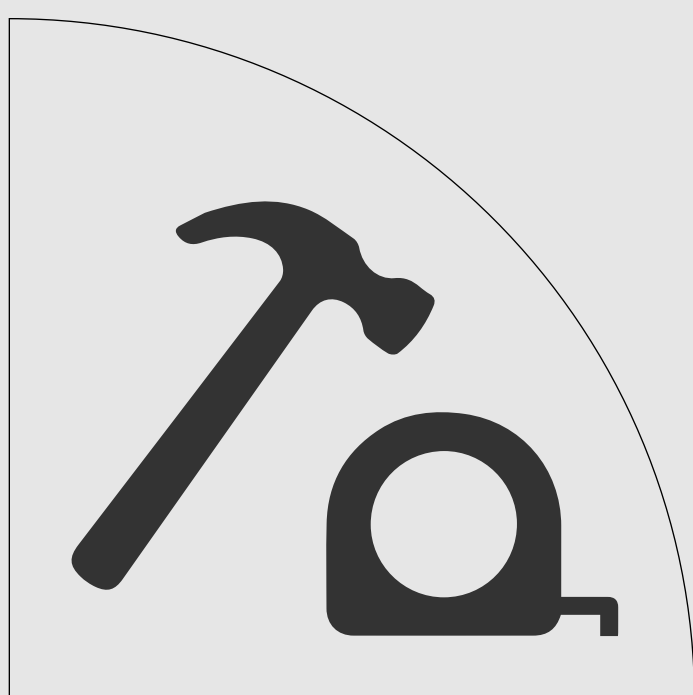
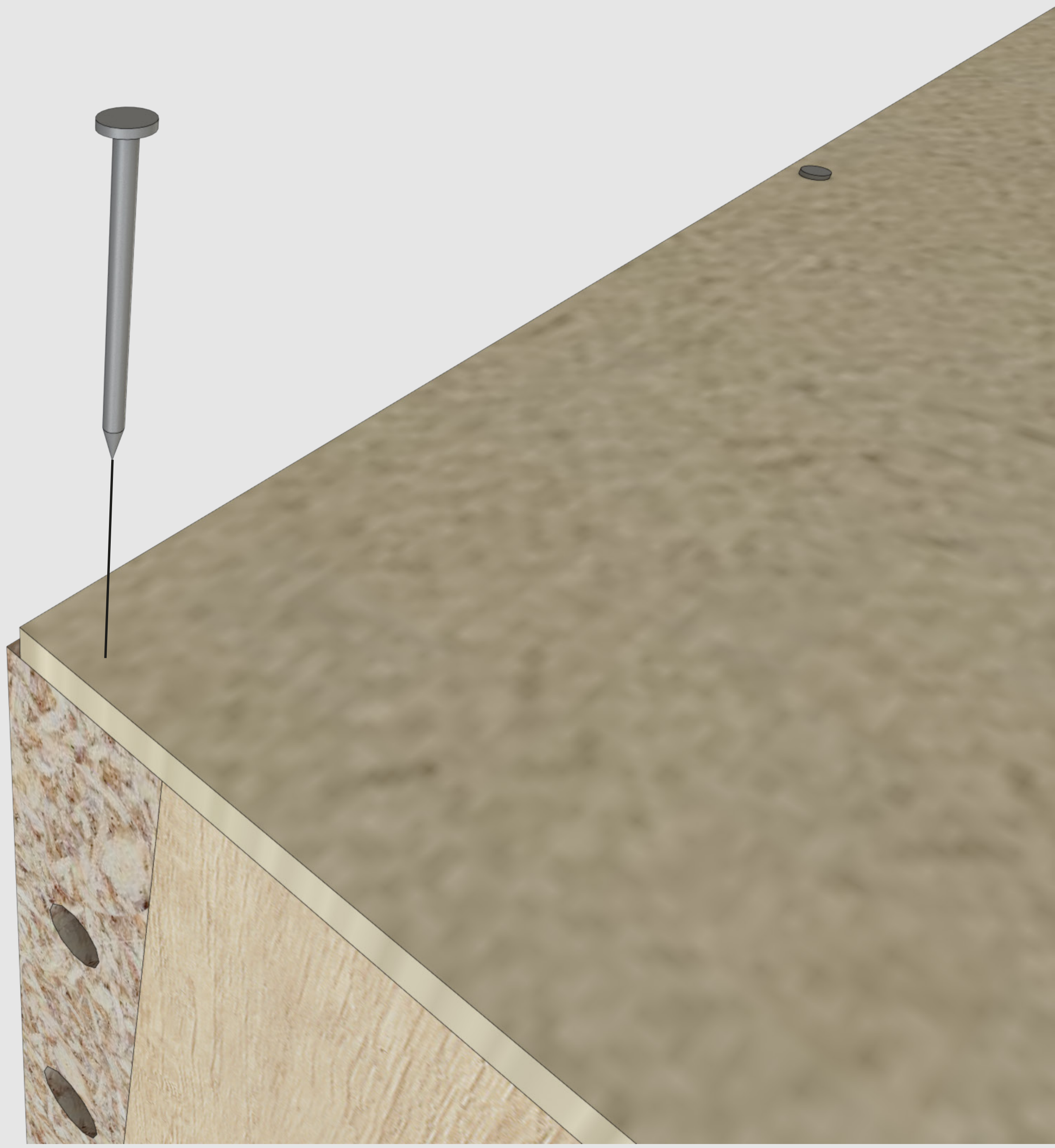
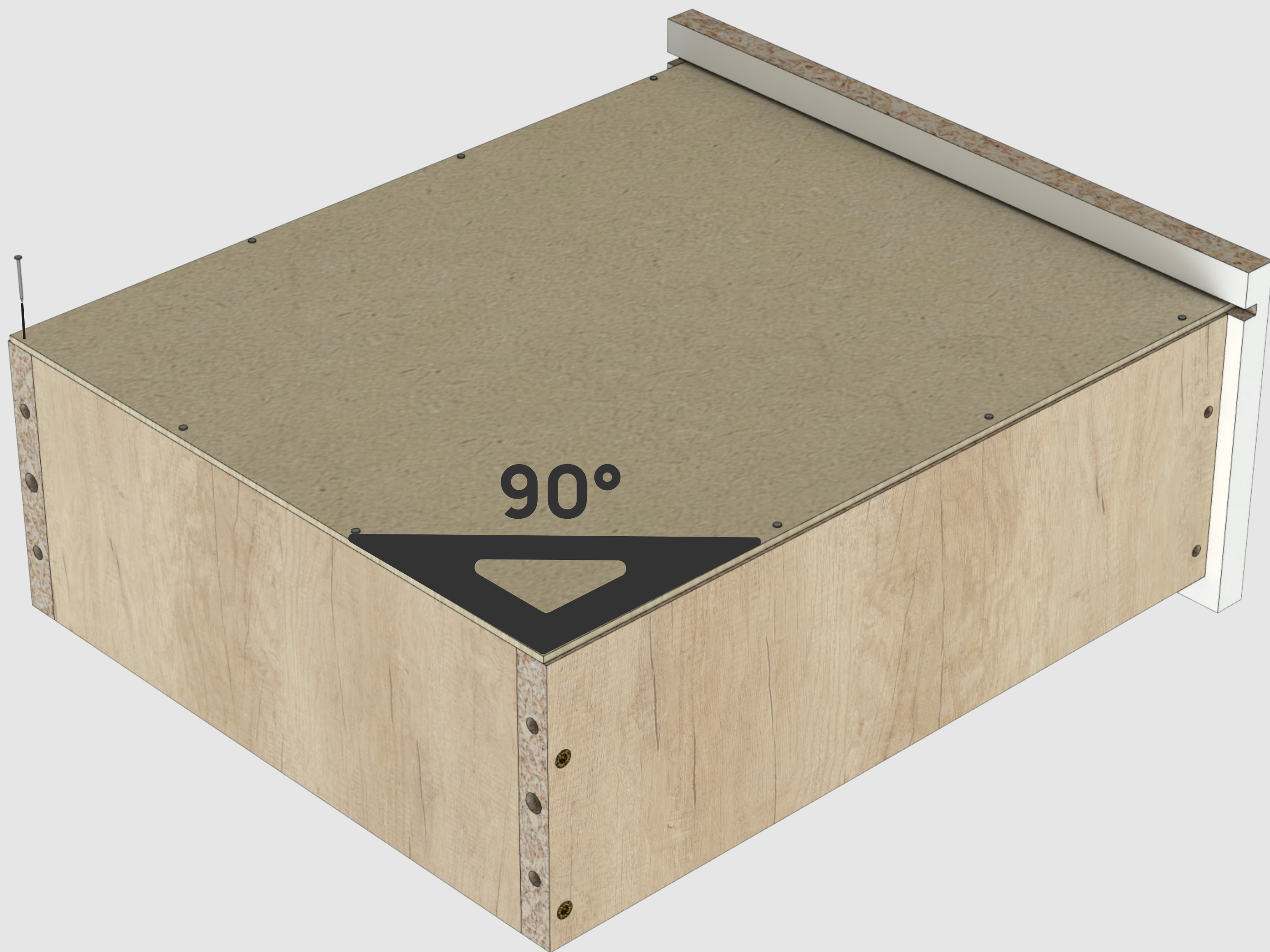


H5
Tornillo 3.5x30

Armado de cajón

04

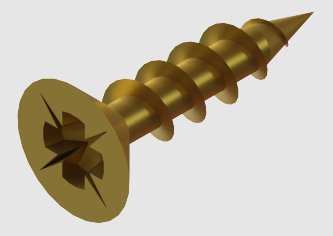
Con un martillo, colocar clavos cada 12 cm aprox. **Corroborar que esté escuadrado el cajón.**



Armado de cajón

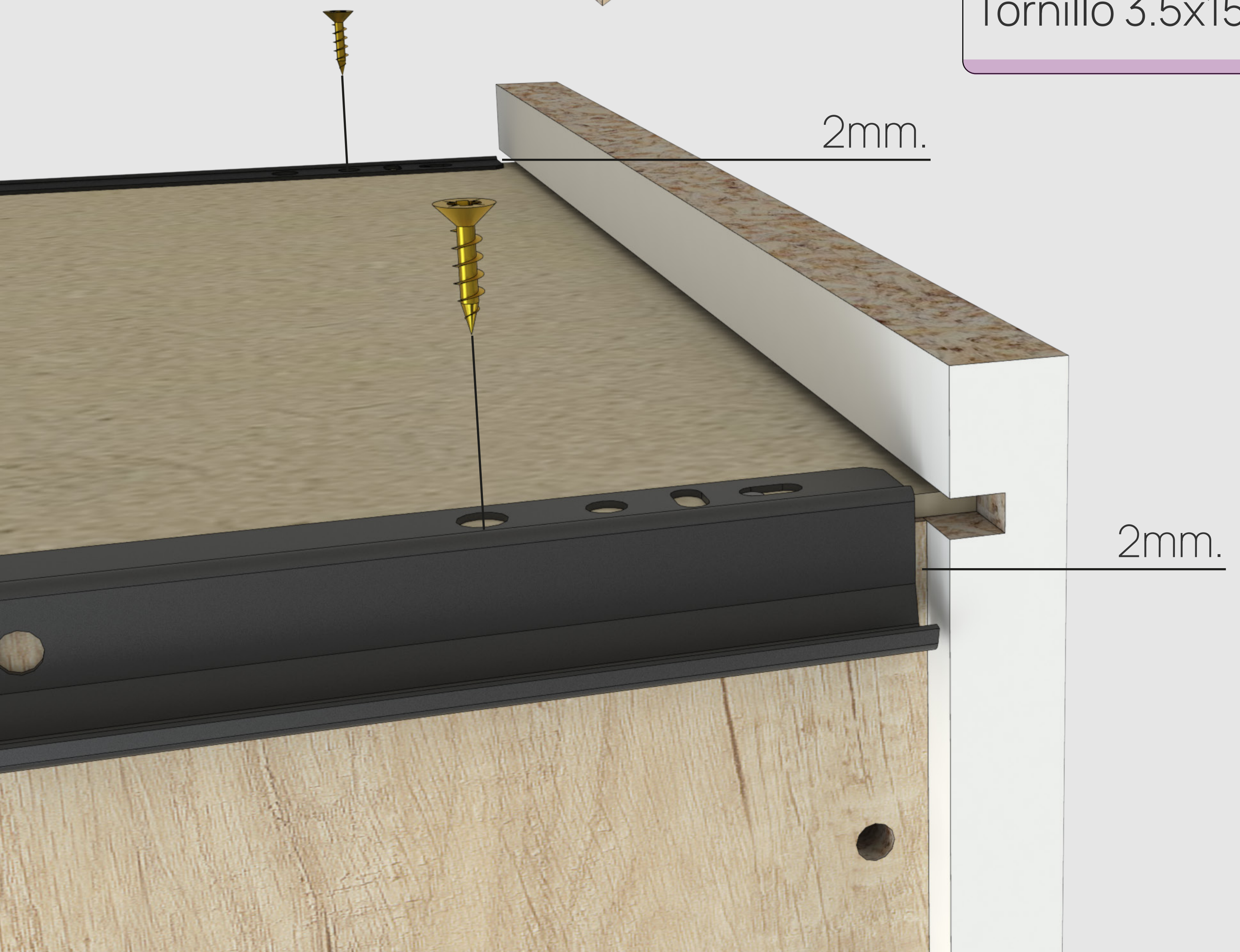
Colocar 2 correderas en la parte inferior del cajón. La corredera debe a 2 mm. de distancia con respecto al frente de cajón.

05



H8

Tornillo 3.5x15





Colocar tirador

Dependiendo del color del mueble

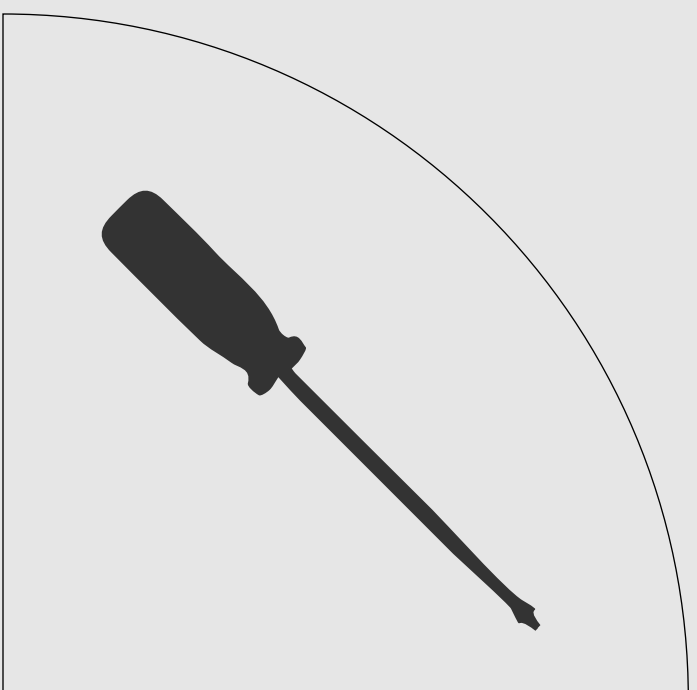
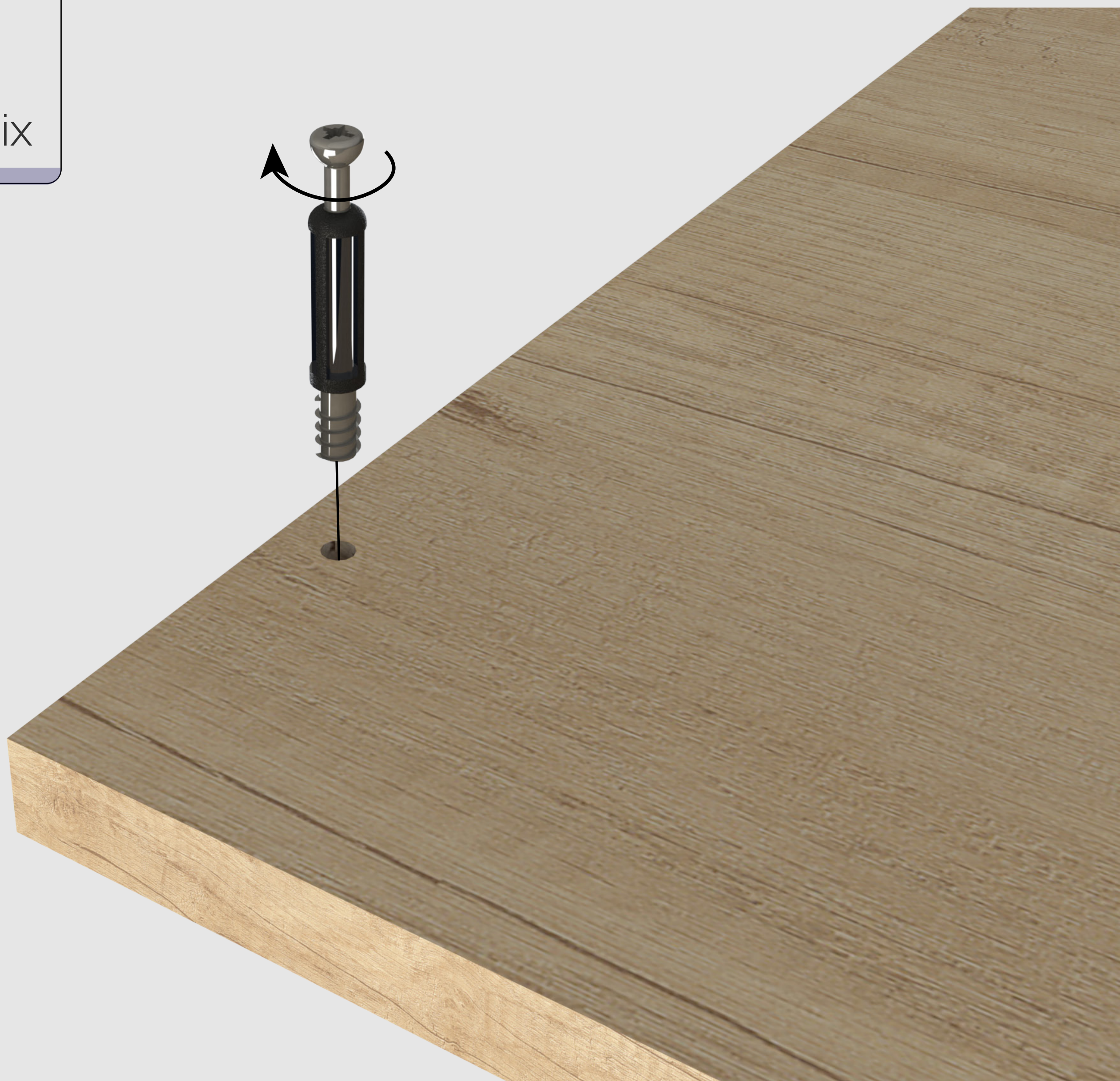
06



Colocar perno minifix

Colocar 6 pernos minifix en la tapa
Utilizar destornillador philips.

07



Colocar correderas

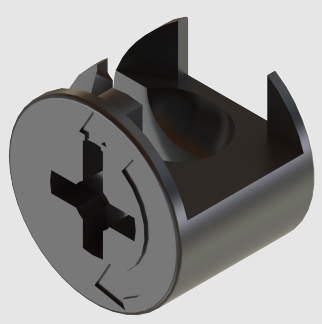
Colocar correderas con 2 tornillos varianta cada una. Posicionar 2 casoletas minifix.

08

P6 Costado perf.
730x593



H7
Corredera Z



H2
Casolta minifix



Colocar correderas

Colocar correderas con 2 tornillos varianta cada una. Posicionar 2 casoletas minifix.

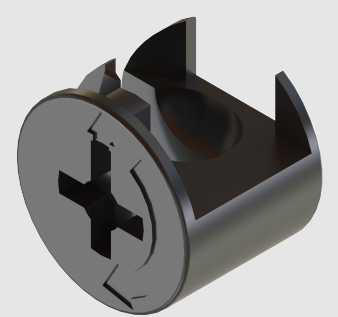
09



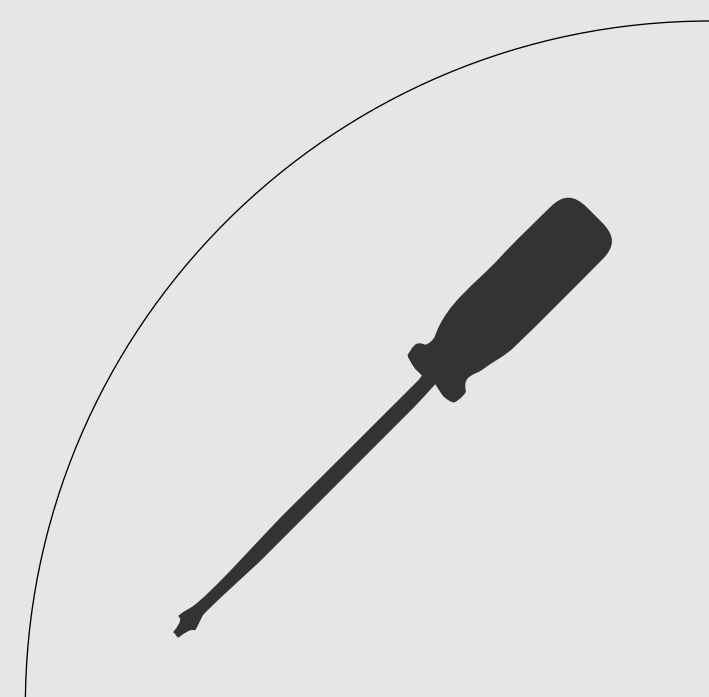
P7 Costado cajonero
369x340



H7
Corredera Z



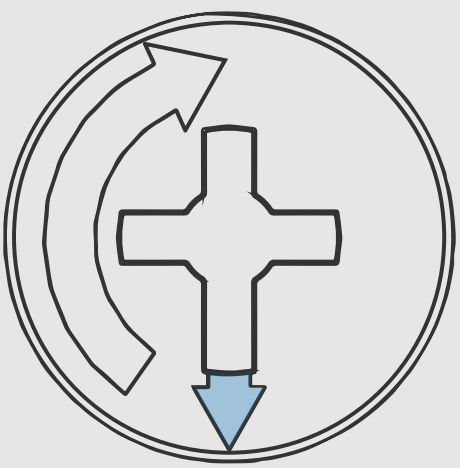
H2
Casolta minifix



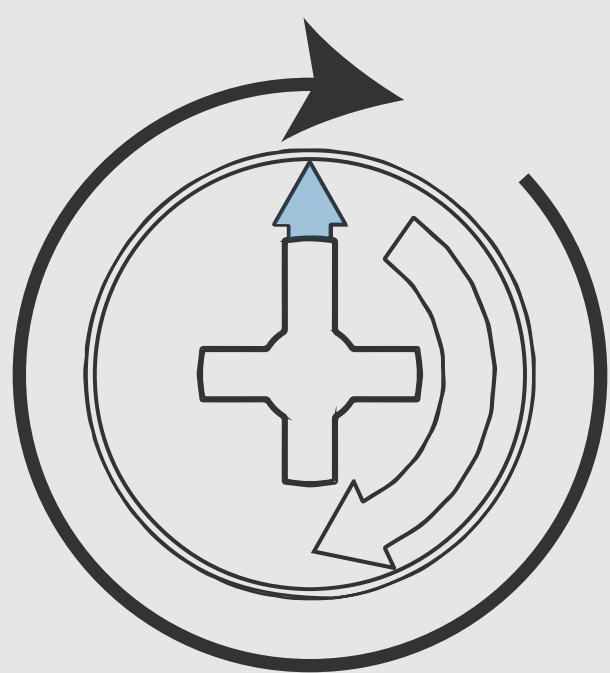
Armado estructura

Los costados están vinculados a la faja mediante 4 tornillos. La tapa se vincula con 4 minifix.

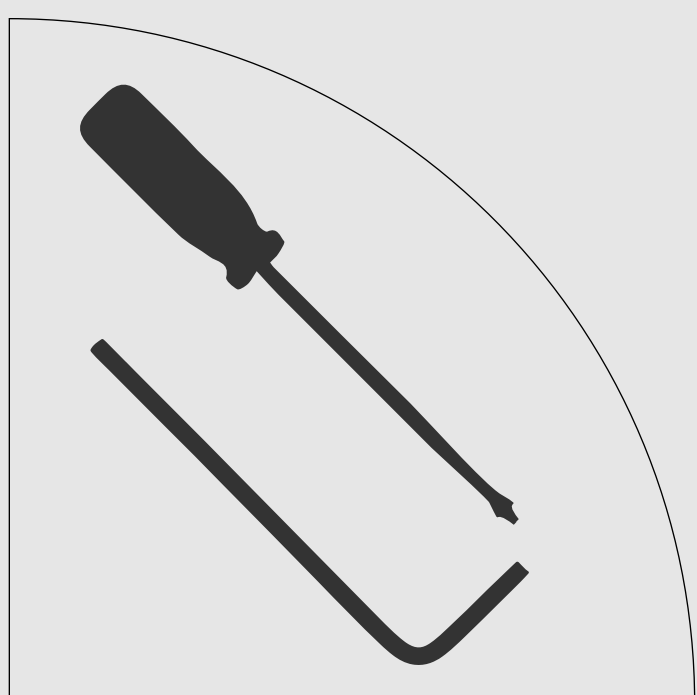
10



Colocar **casoleta minifix** con la flecha hacia apuntando hacia la perforación.



Ajustar girando **180°**



Armar cajonero

Colocar costado cajonero y unirlo al costado perf. mediante faja cajón.

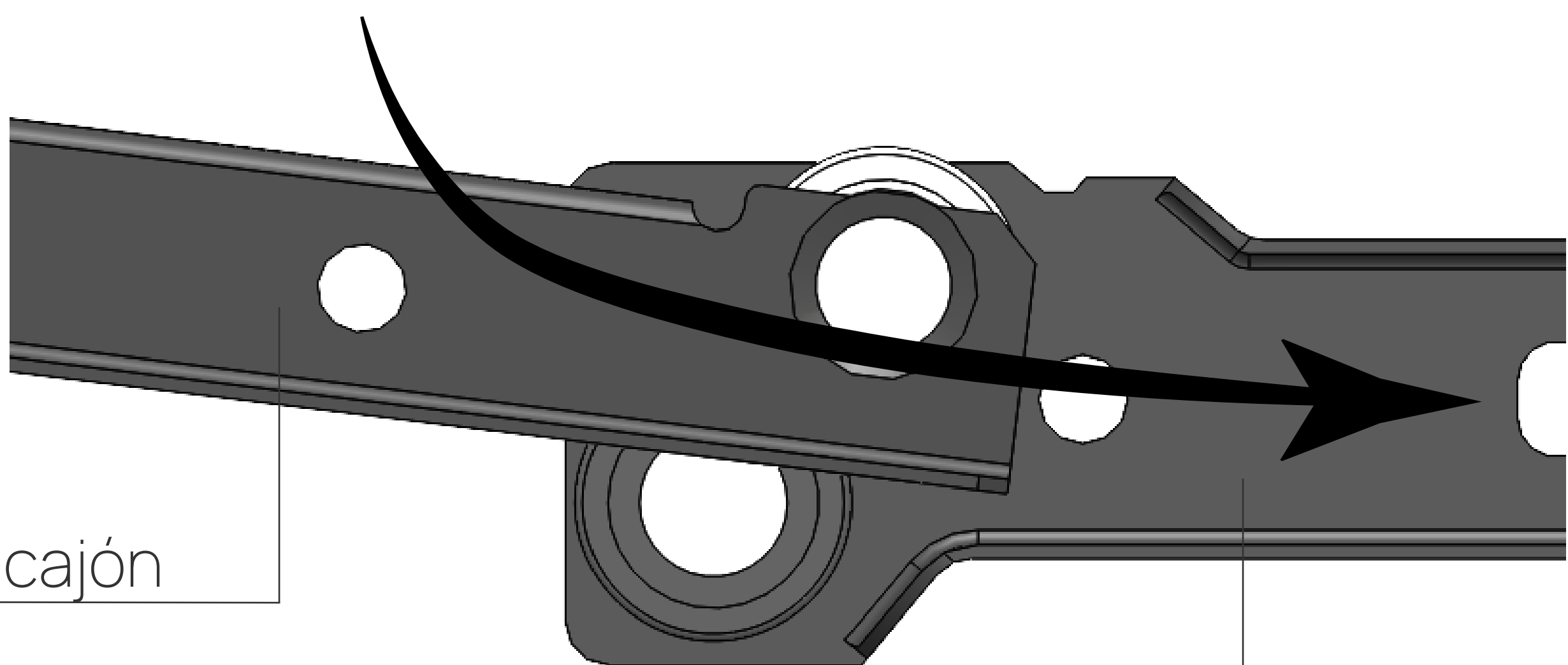
11



Colocar correderas

Deslizar correderas como ejemplifica el gráfico

12



Corr. cajón

Corr. costado