



COMODA
PACK

Seguí los pasos

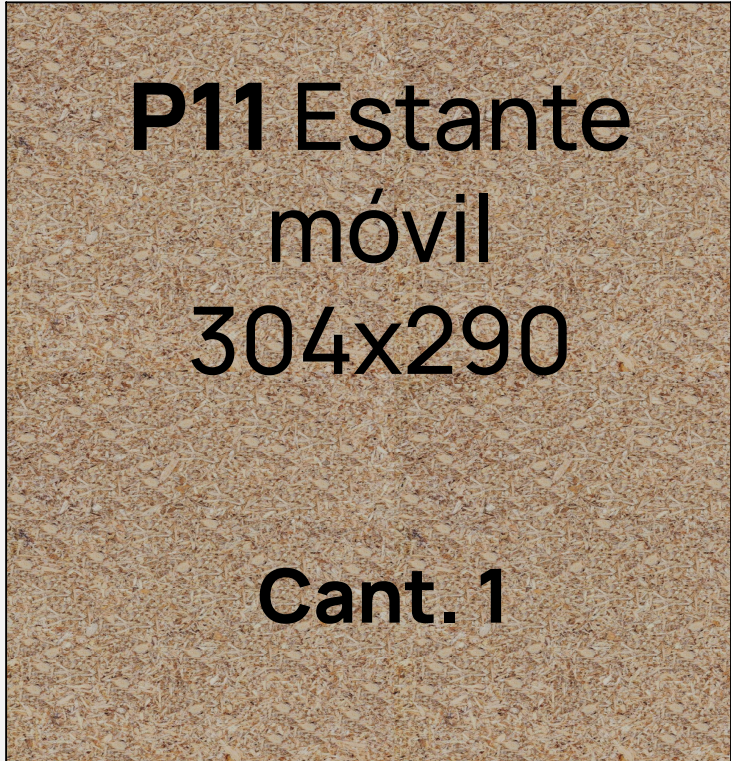
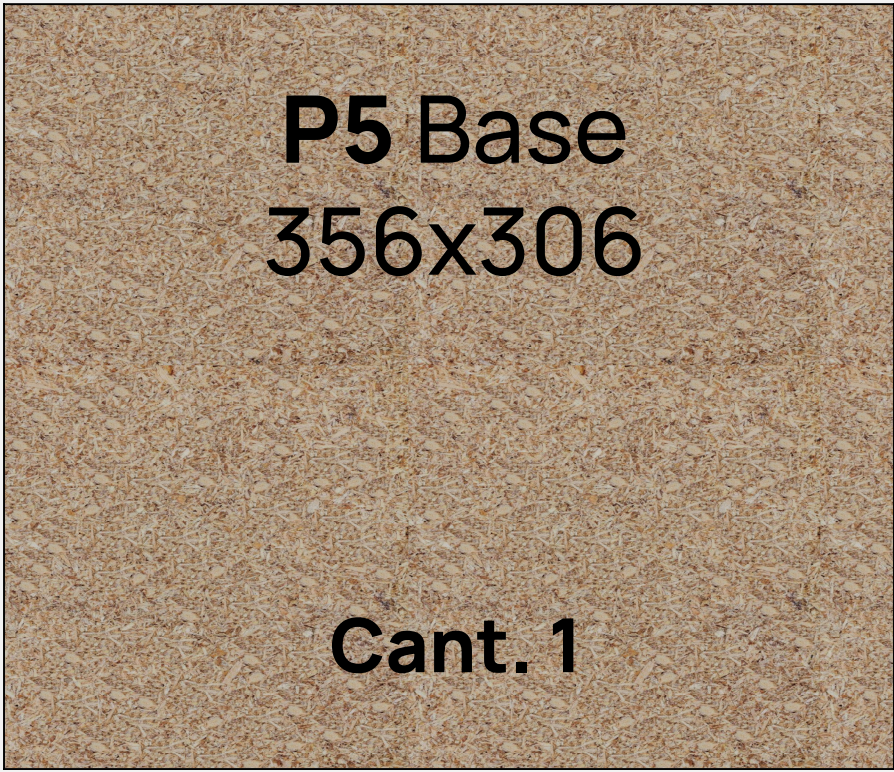
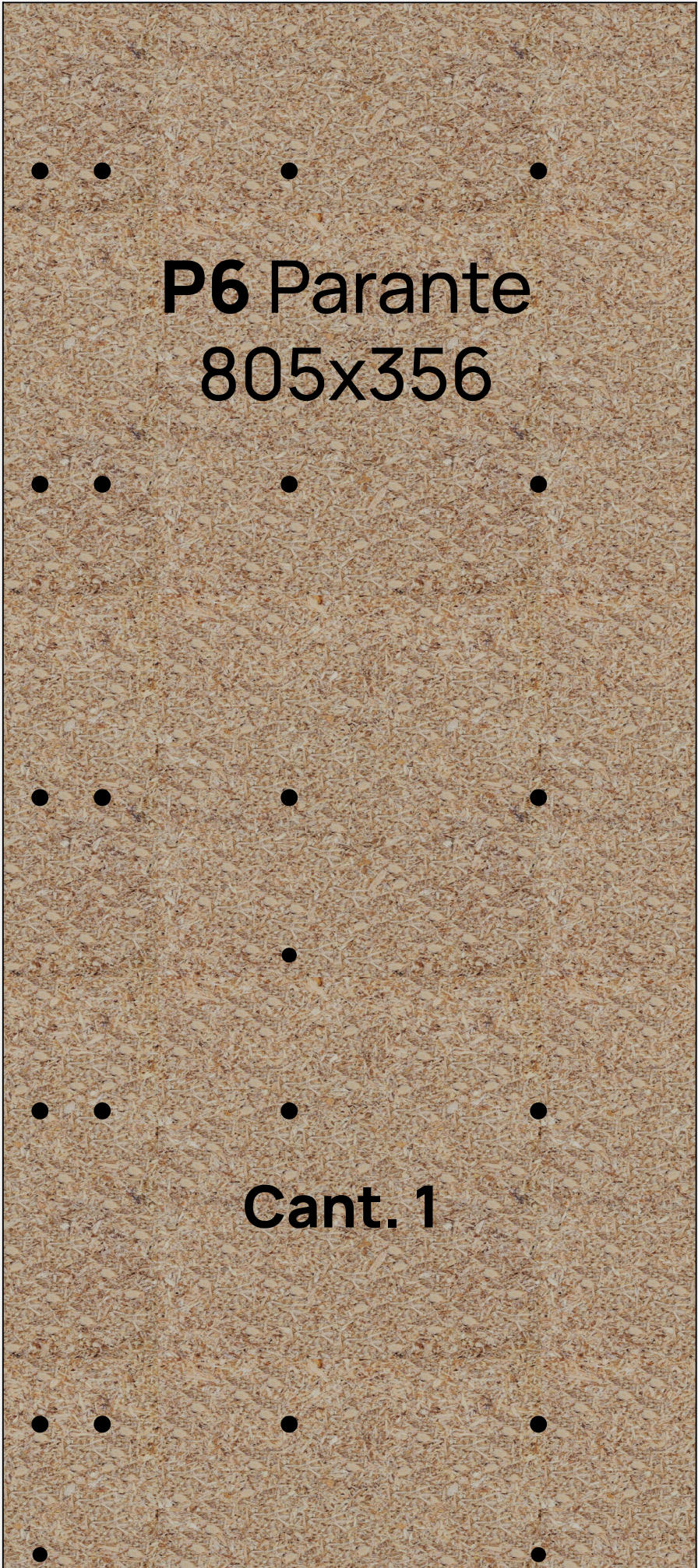
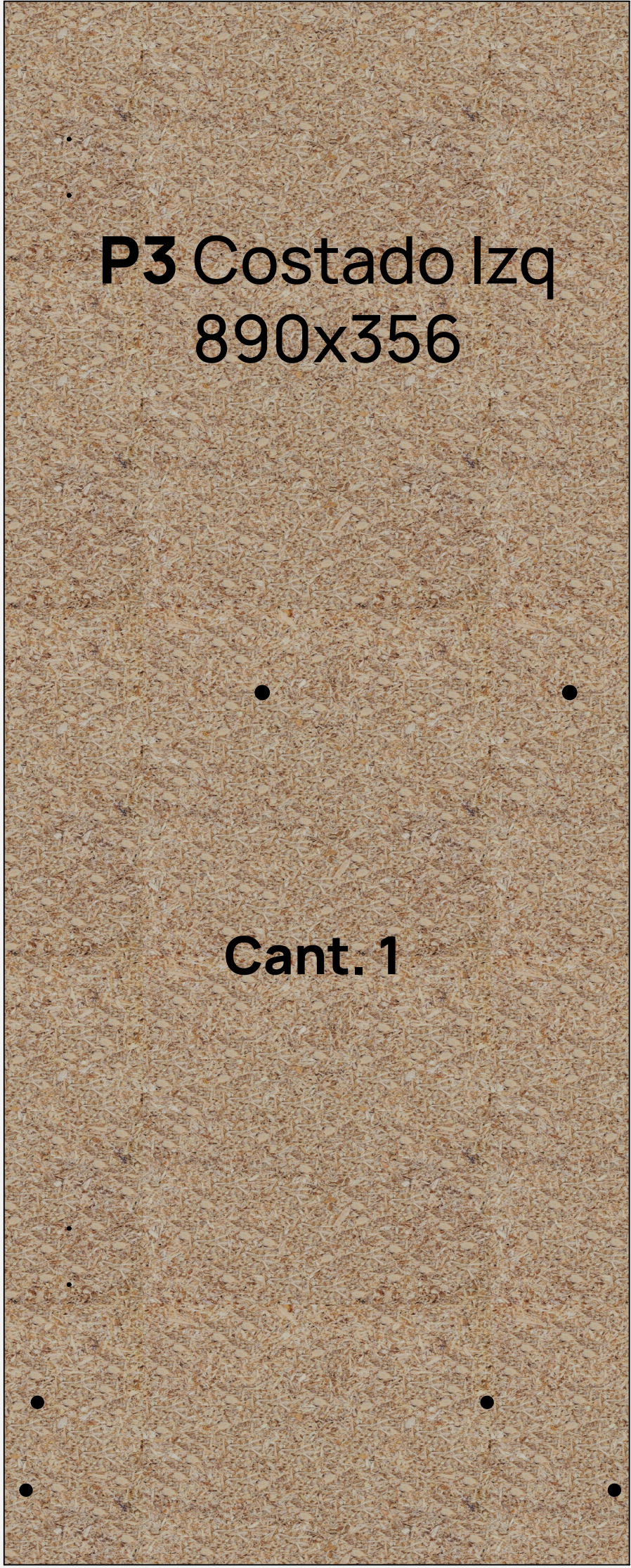
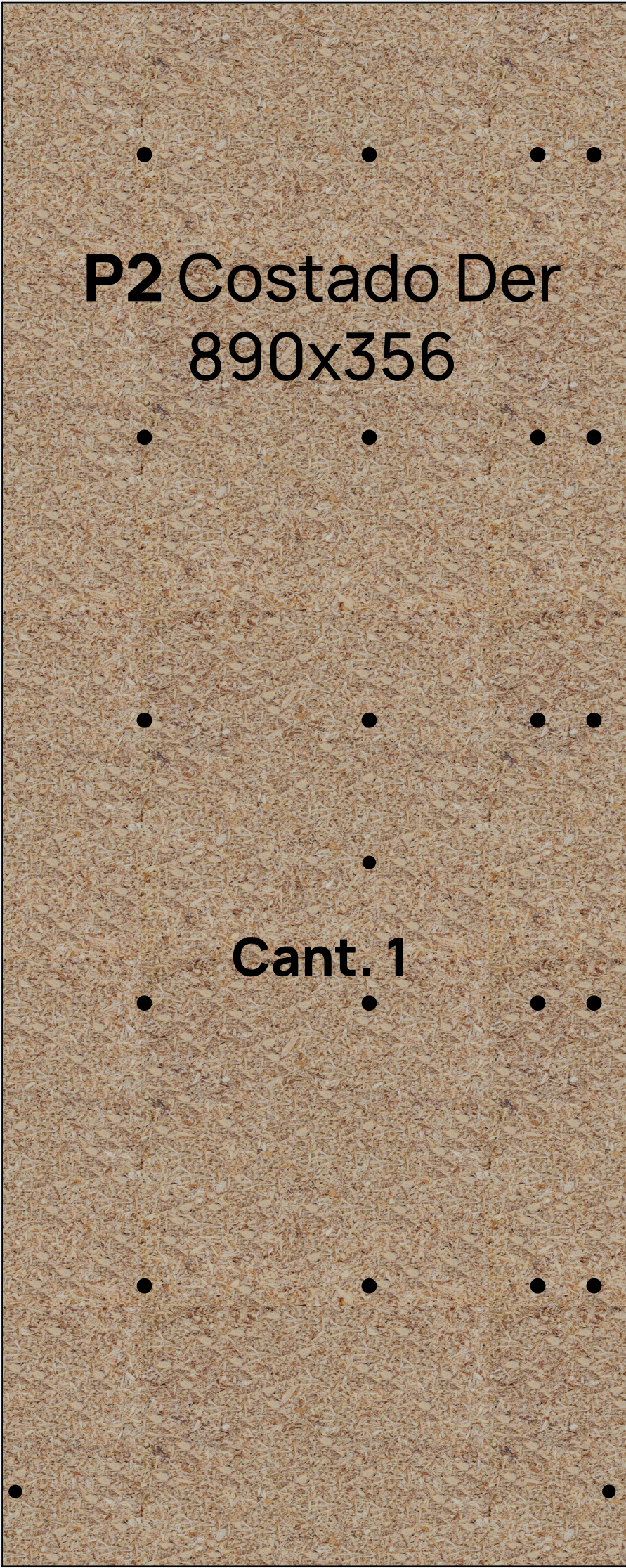
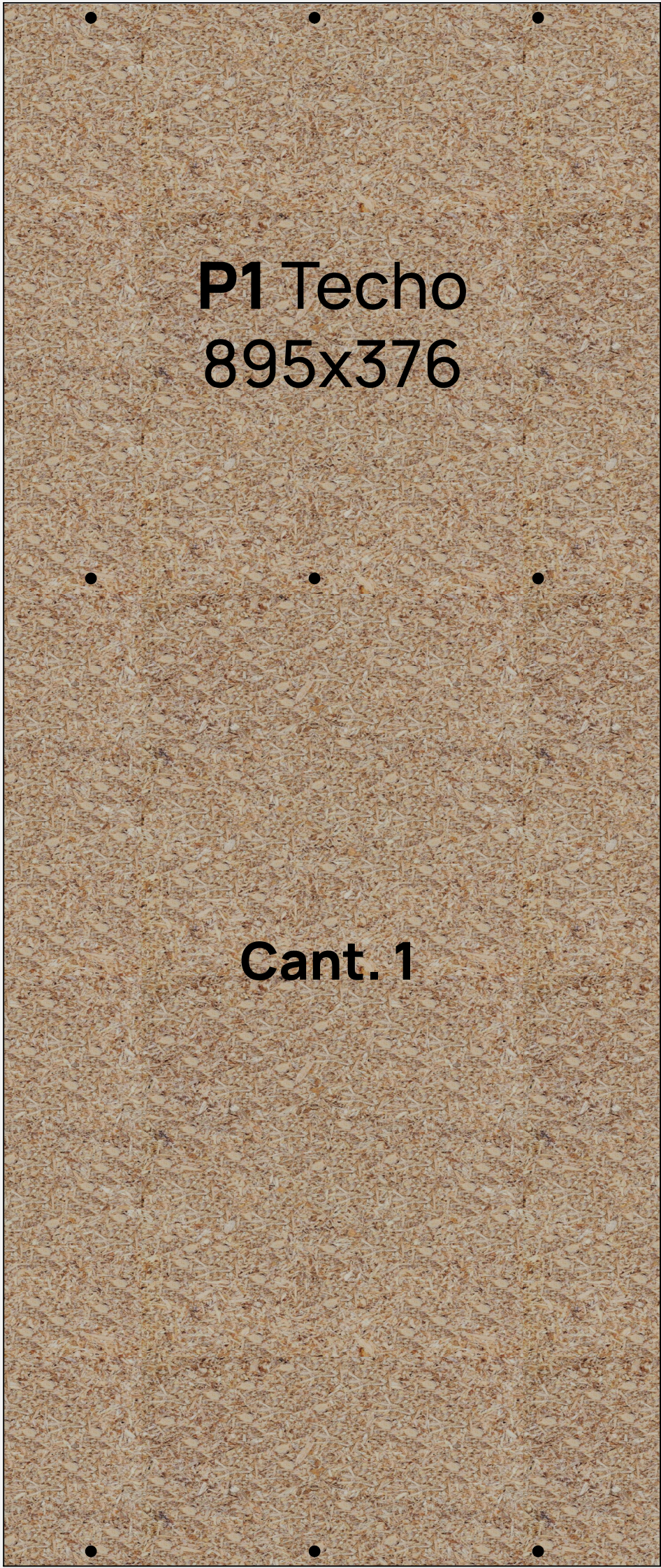
y armá tu
Cómoda

「Lote 1」





Abrí la caja y posicioná las piezas en el piso.





Abrí la caja y posicioná las piezas en el piso.

P9 Zócalo Com Del

863x85

Cant. 1

P10 Zócalo Com Tras

863x85

Cant. 1

P4 Zócalo Chi Tras

542x85

Cant. 1

P60 Fondo chi 562x277

Cant. 3

P61 Fondo Puerta 831x323

Cant. 1

Píezas de cajón

P7 Frente cajón

550x157

Cant. 5

P52 Fondo Cajón 522x347

Cant. 5

P50 Lateral cajón

340x140

Cant. 10

P51 Contrafrente

510x99

Cant. 5



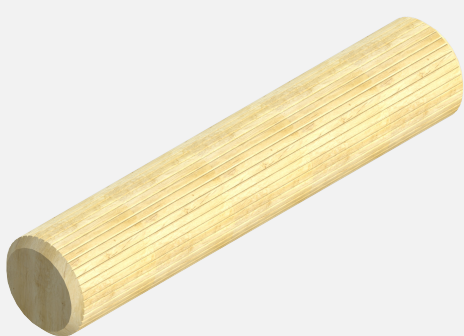
Herrajes



H1

Corredera
plástica

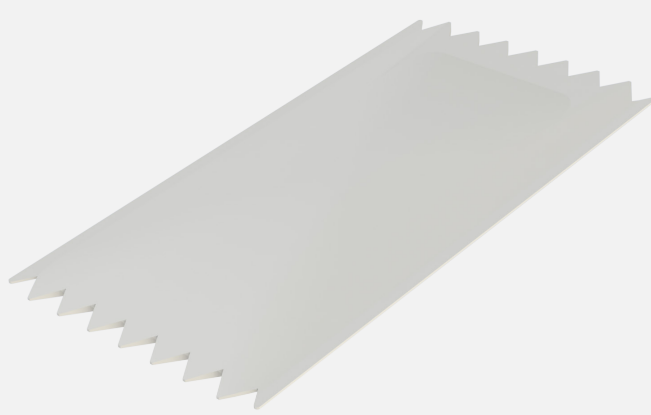
10 ud.



H2

Tarugo
6x30

29 ud.



H3

Sachet cola
10 grs.

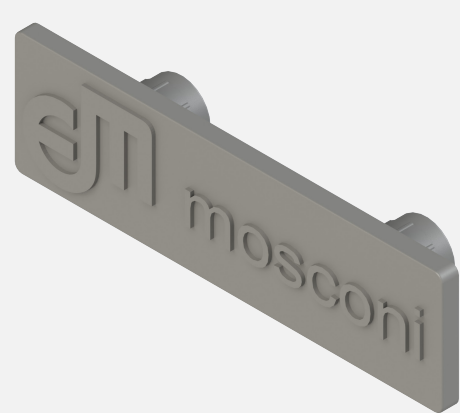
3 ud.



H4

Tornillo confirmat
6.30x50

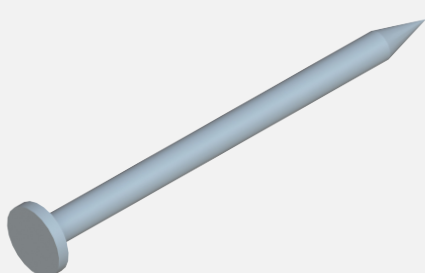
10 ud.



H5

Marca
empresarial

1 ud.



H6

Clavo

1 bolsa



H7

Base plástica
redonda

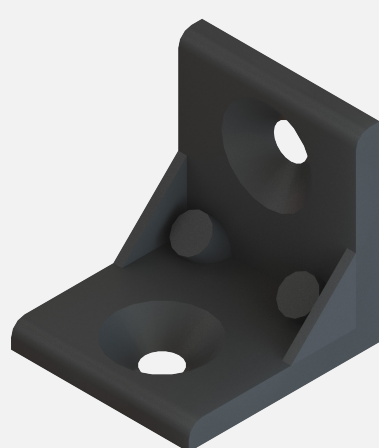
6 ud.



H8

Tornillo
3.5x30

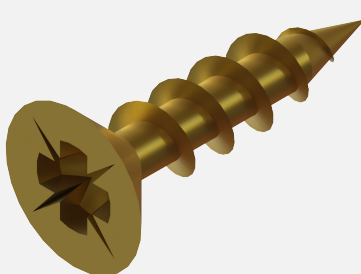
20 ud.



H9

Escuadra
plástica

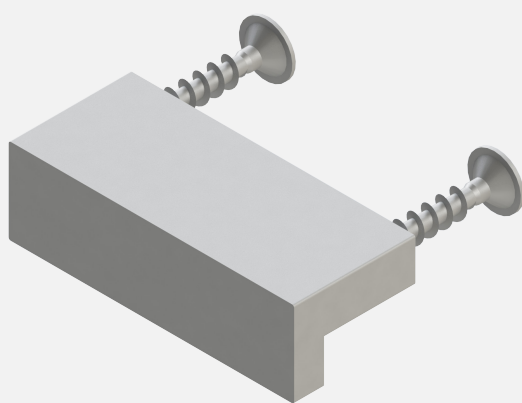
10 ud.



H10

Tornillo
3.5x15

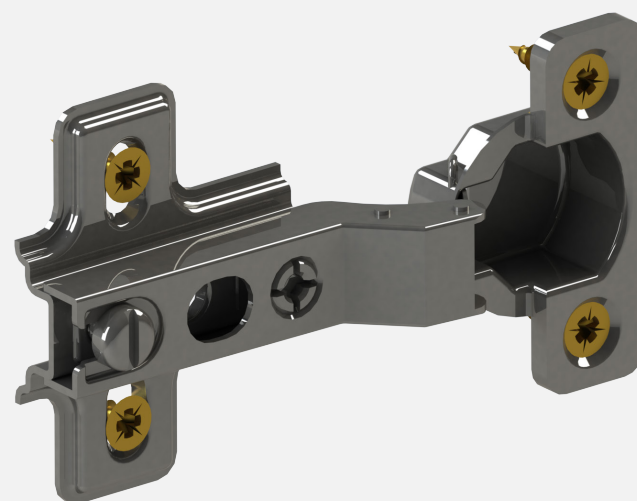
28 ud.



H11

Tirador
Bigfer
+Tornillos

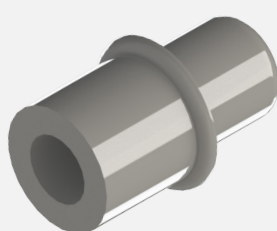
6 ud.



H12

Bisagra 26
codo 9

2 ud.



H13

Soporte de estante

4 ud.



H14

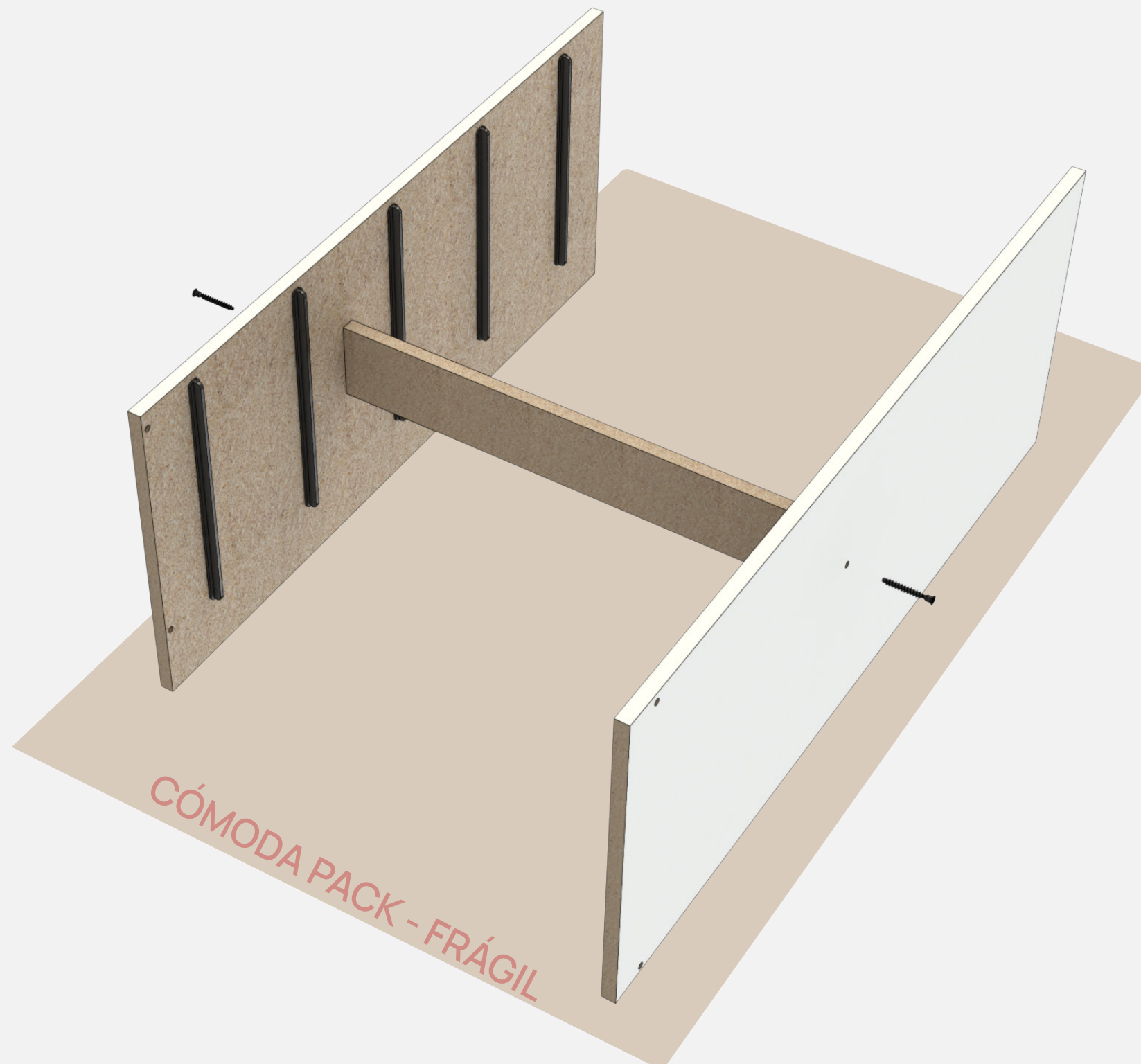
Llave Allen

1 ud.

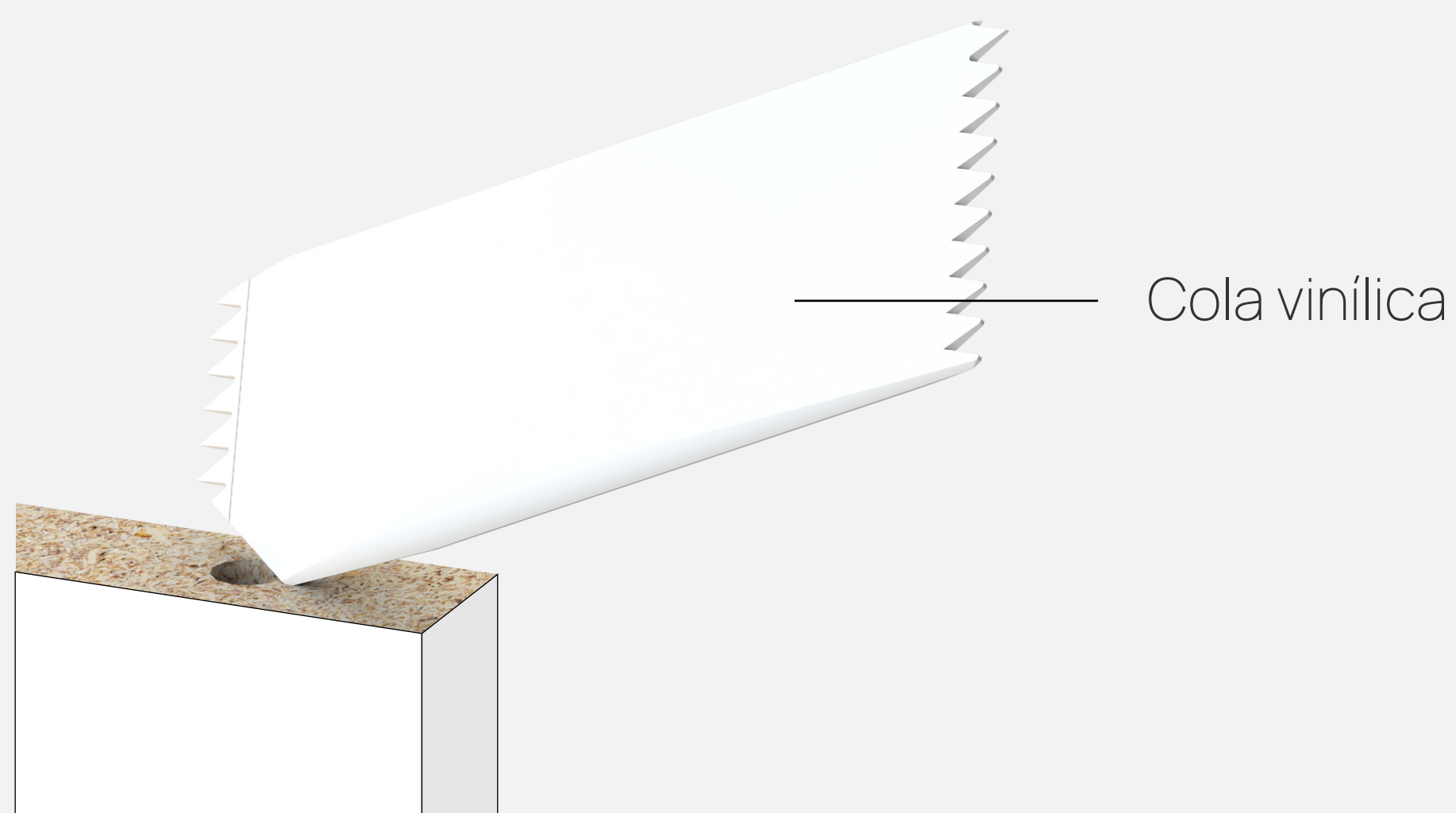
¿Qué herramientas necesito?



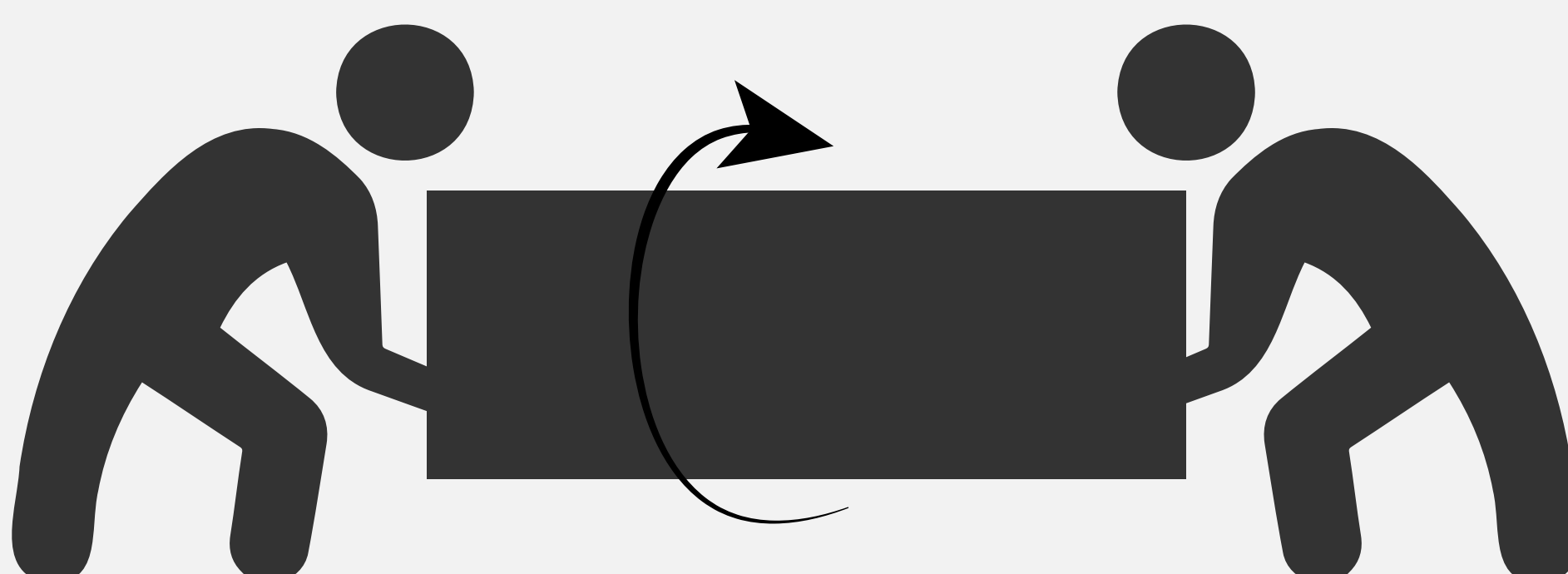
Para cuidar las piezas,
armá la cómoda sobre la caja.



¡Recordá encolar las
perforaciones donde van tarugos!



Al momento de rotar, recomendamos
que sean dos personas.

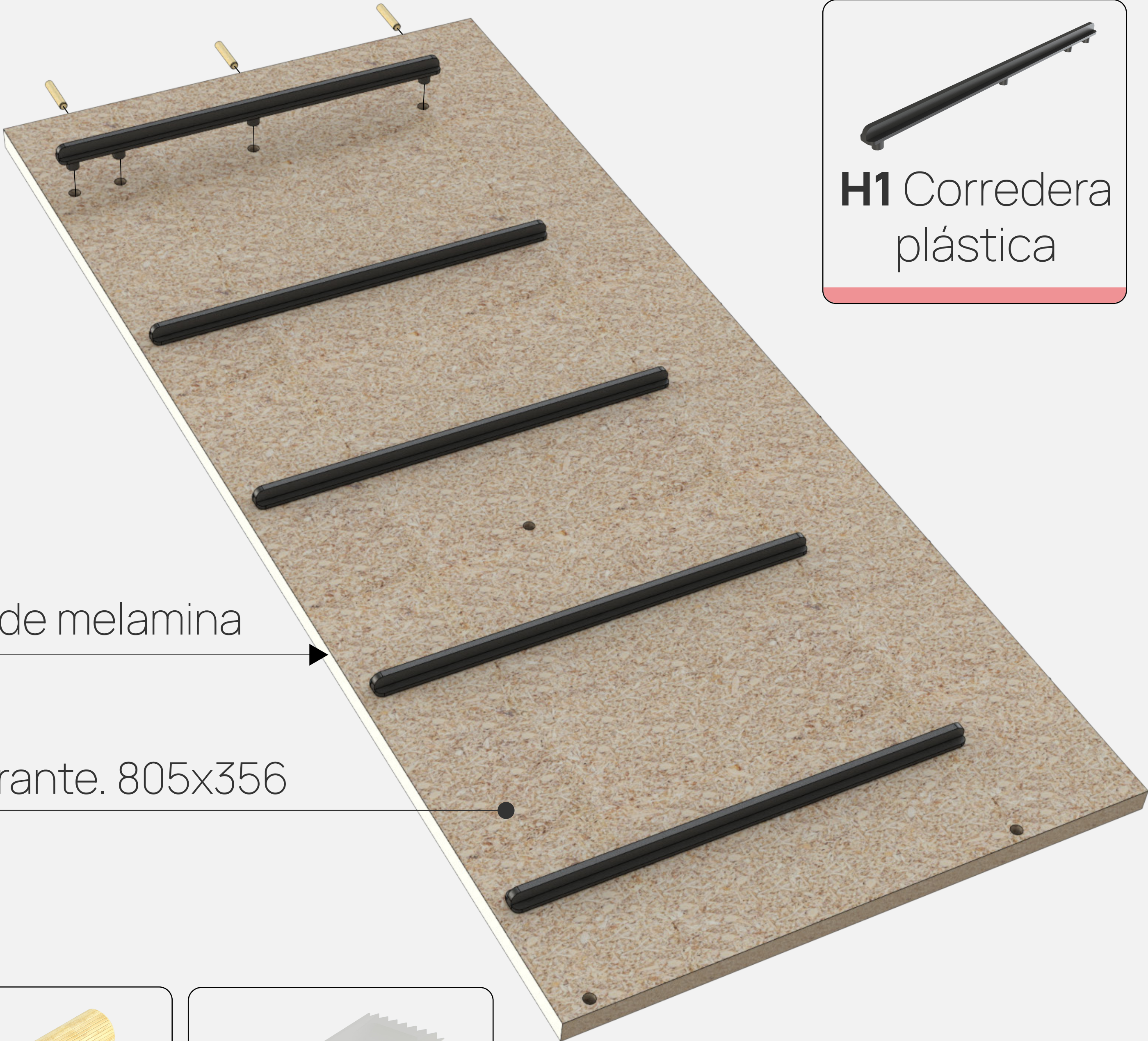




Colocar correderas y tarugos

01

Colocar en **Parante** 3 tarugos y encastrar 5 correderas plásticas.



H1 Corredera plástica

Canto de melamina

P1 Parante. 805x356

H2 Tarugo 6x30

H3 Sachet de cola





Repetir paso 1 en Costado Der

Colocar en la pieza **Costado Der.** 3 tarugos y 5 correderas plásticas.

02



H1 Corredera plástica



P2 Costado Der. 890x356

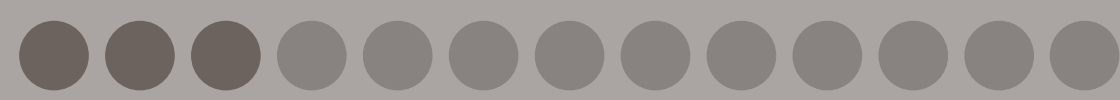


H2 Tarugo 6x30



H3 Sachet de cola





Vincular zócalo

Vincular **Costado Der** y **Parante** mediante **Zócalo Chi**.

03

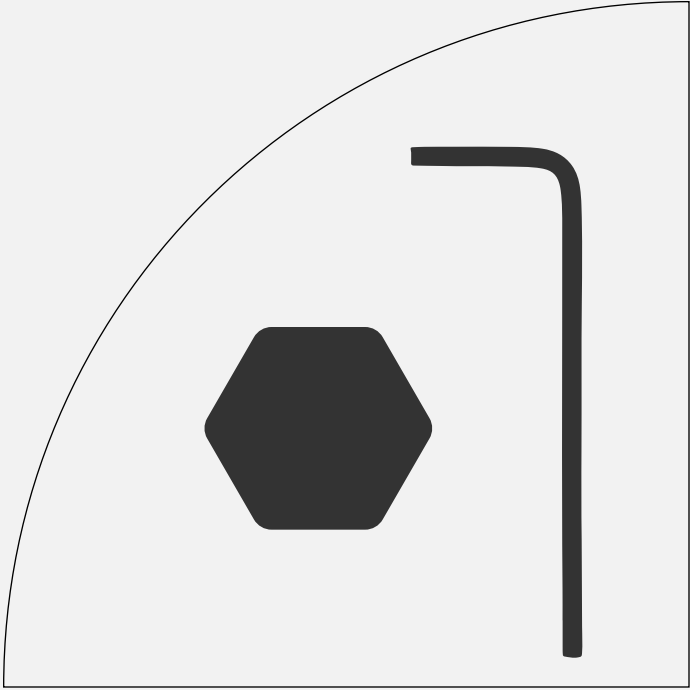
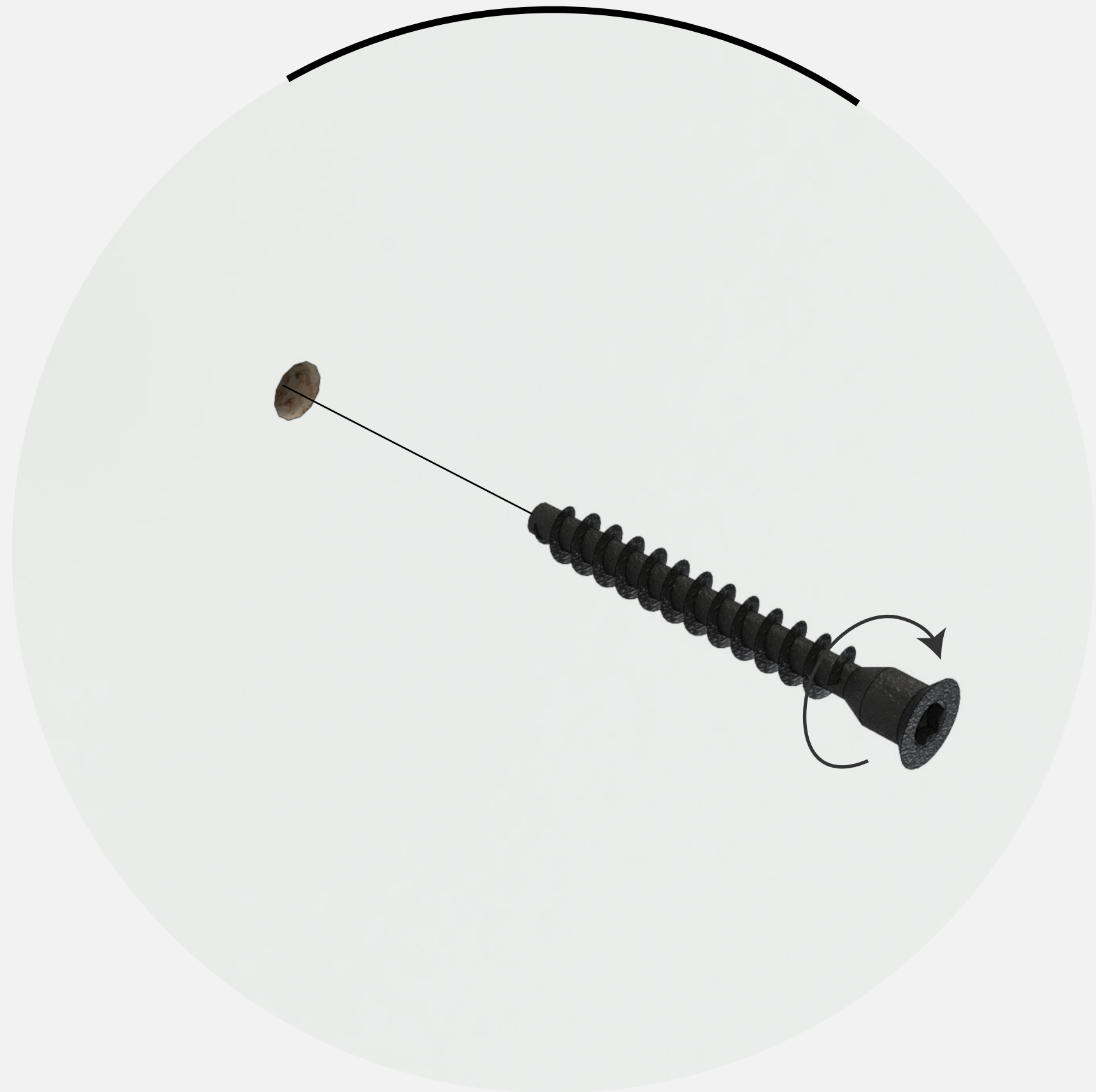
P1 Parante.

P4 Zócalo Chi Tras 542x85

P2 Costado Der.



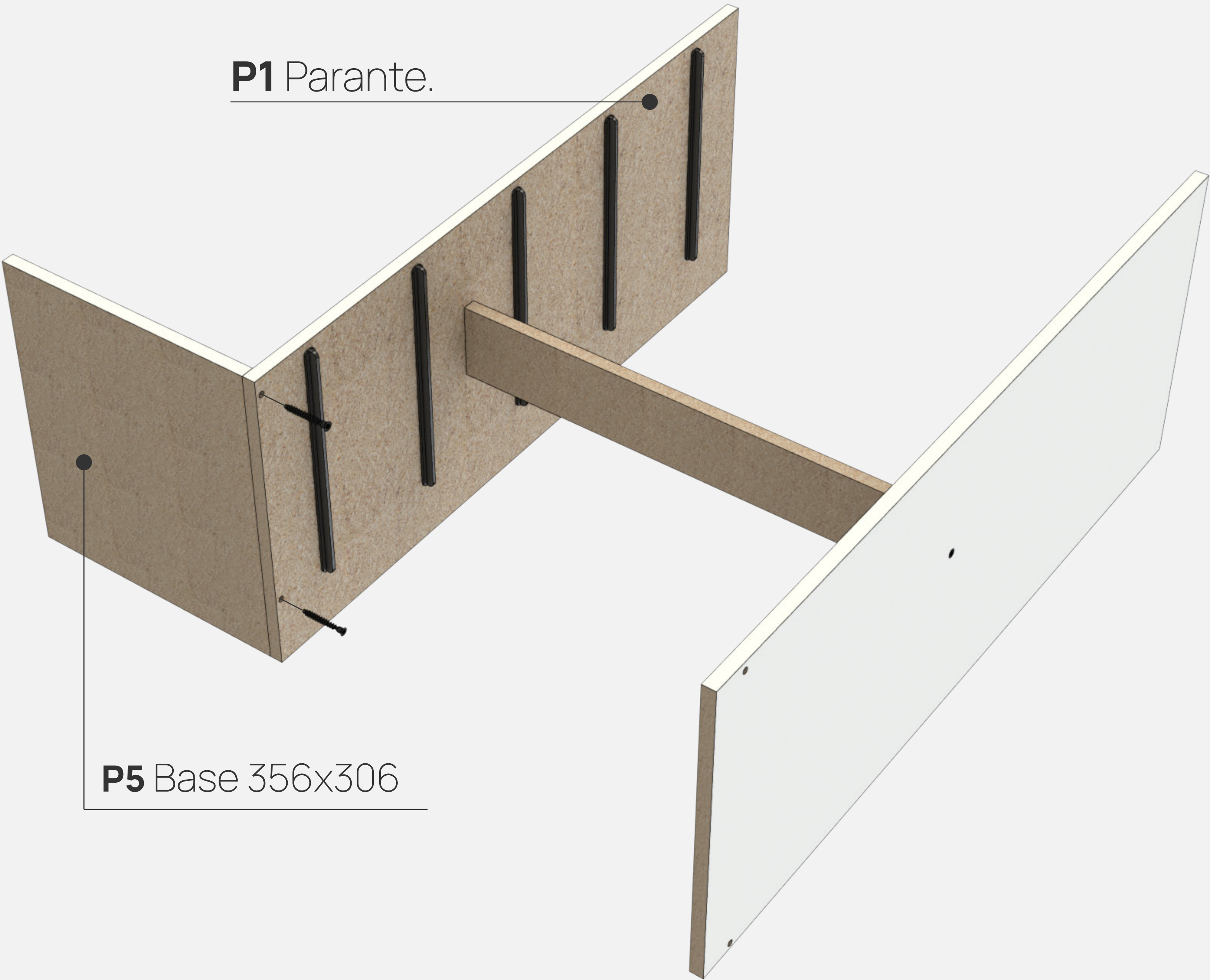
H4 Tornillo
confirmat





Vincular base

Vincular **Base** con **Parante**, con 2 tornillos confirmat.



H4 Tornillo confirmat

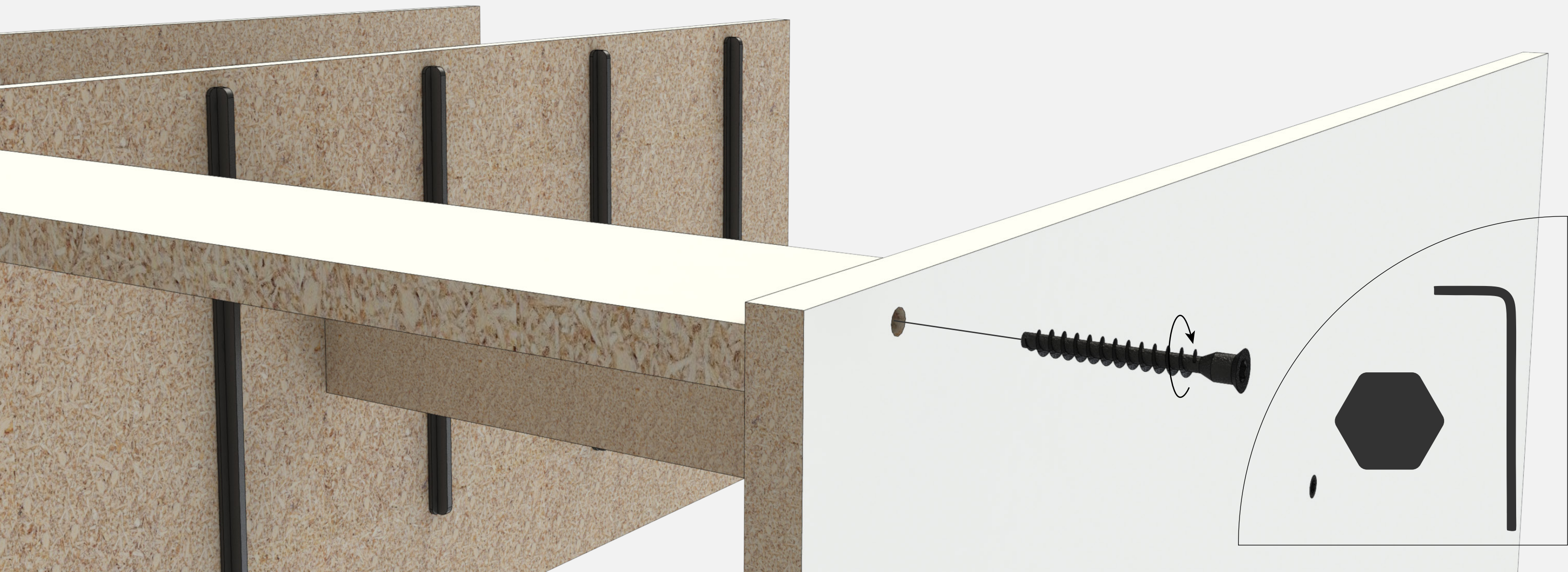
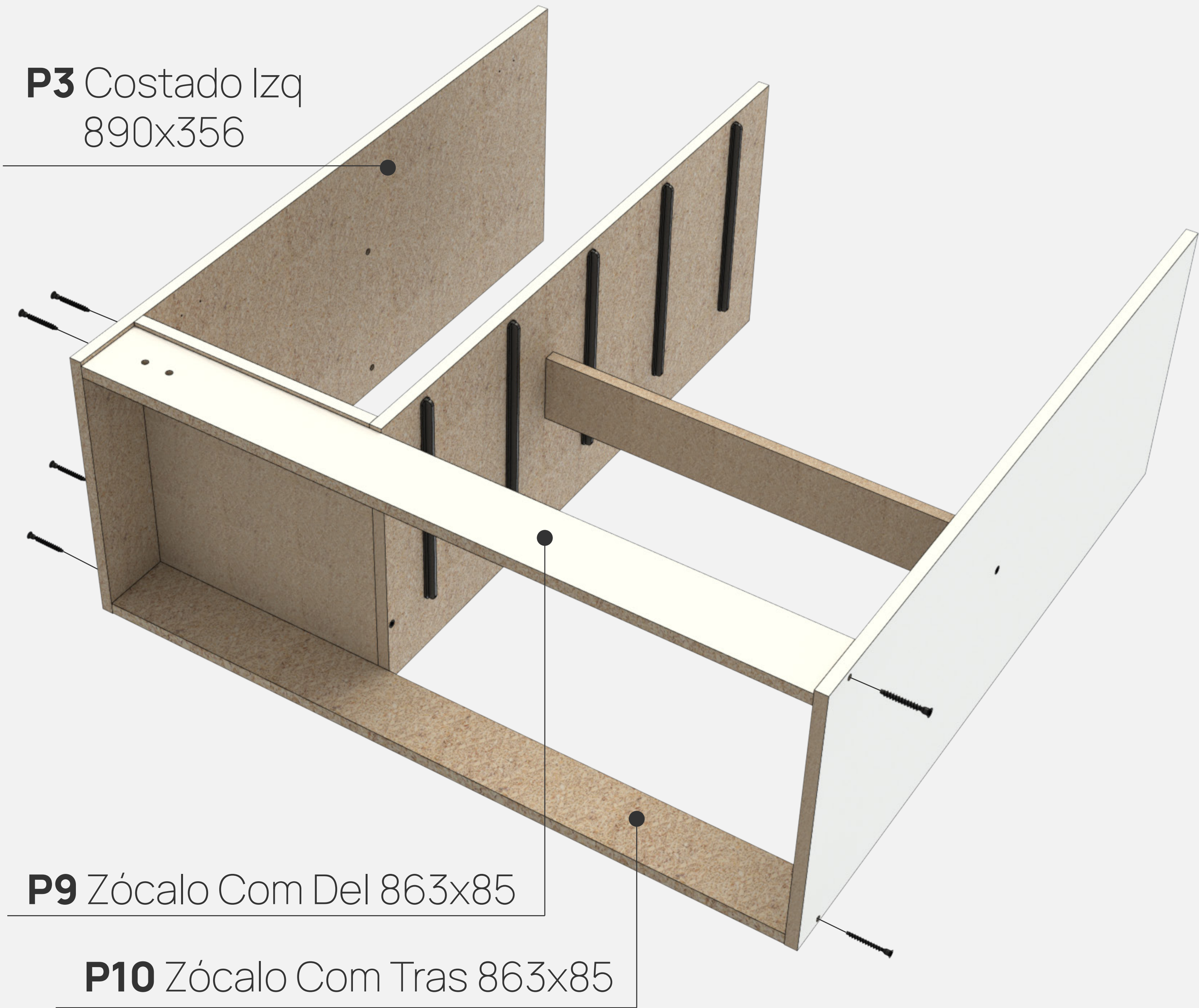




Costado izq. y zócalos

Colocar **Costado Izq.** vincular con base y **Zócalos Del.y Tras.**

05

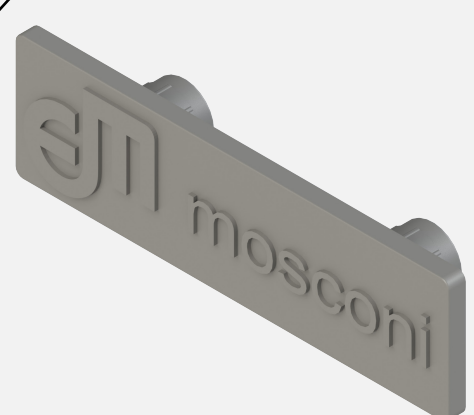
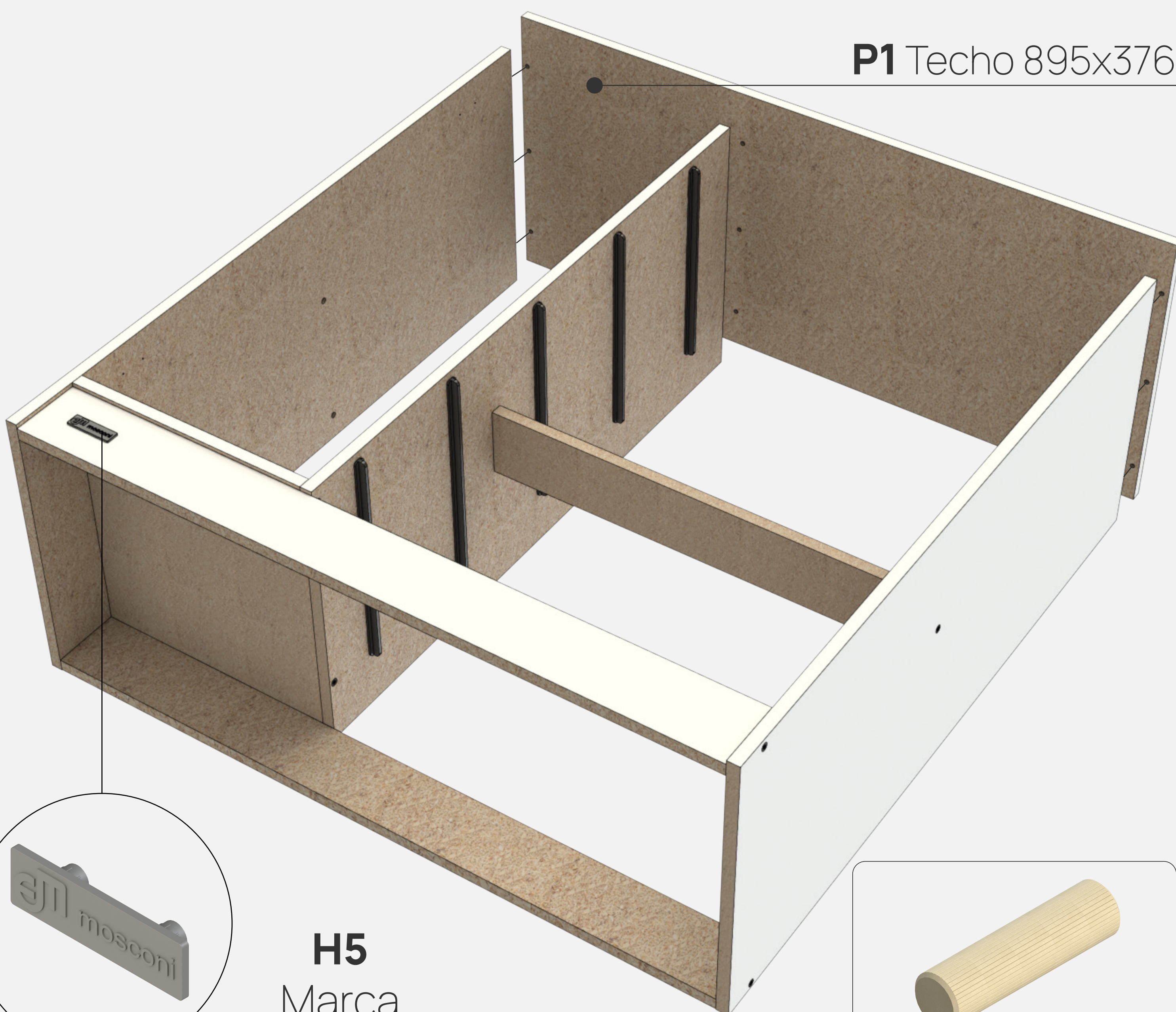


Colocar techo

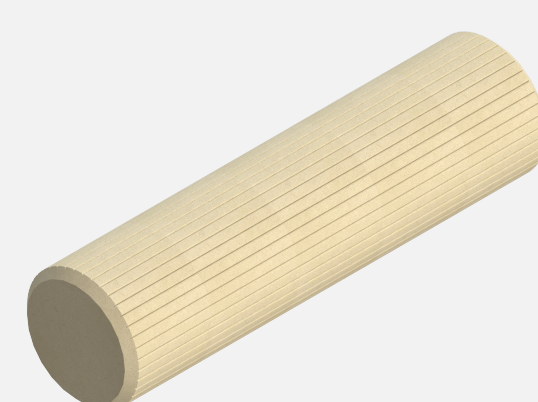
Vincular pieza **Techo** a los 2 costados y a parante, mediante 9 tarugos.
Encolar perforaciones.

06

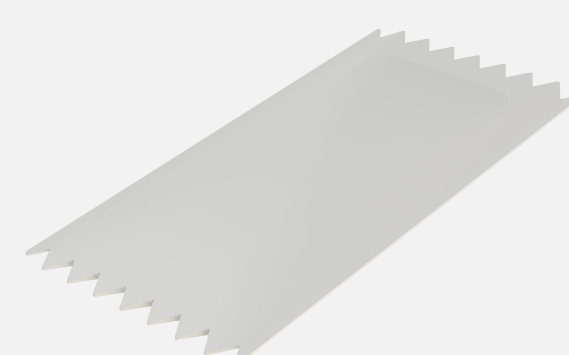
P1 Techo 895x376



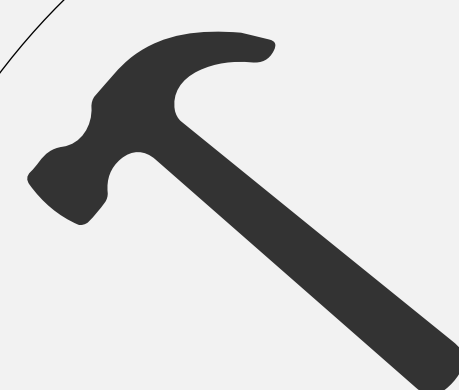
H5
Marca
empresarial

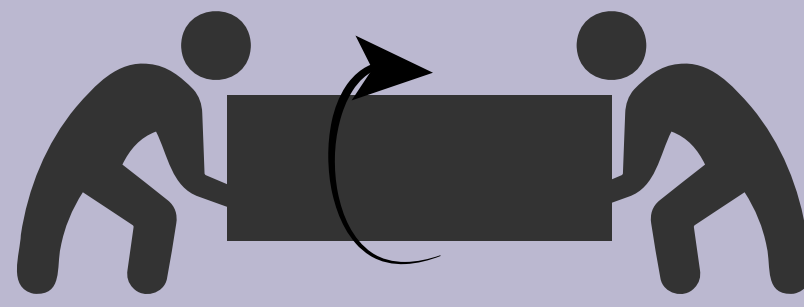


H2 Tarugo
6x30



H3
Sachet cola





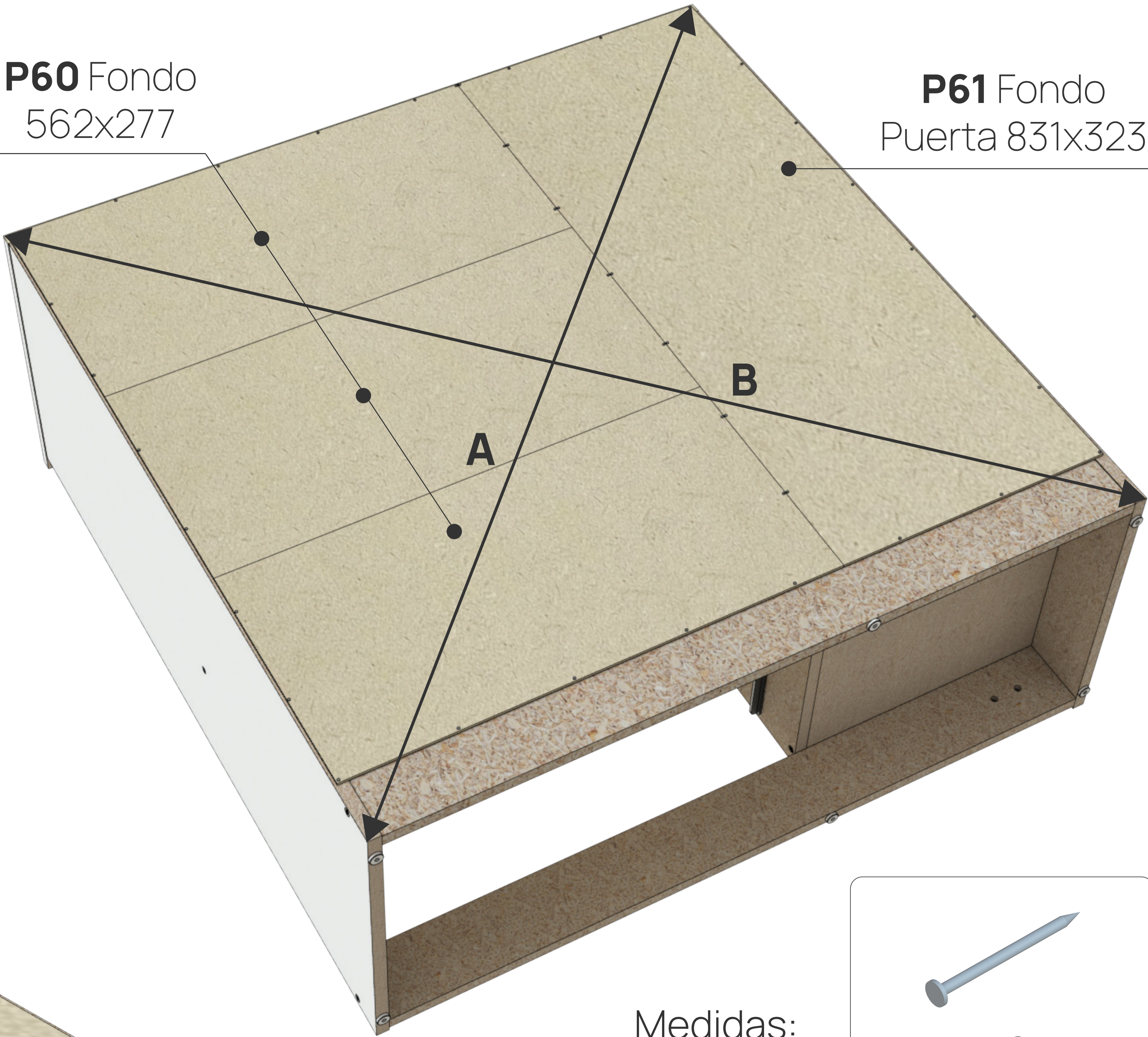
Colocar fondos.

Con un martillo, colocar clavos cada 15 cm aprox.
Corroborar que, las medidas A y B sean iguales.
Clavar 6 bases plásticas.

07

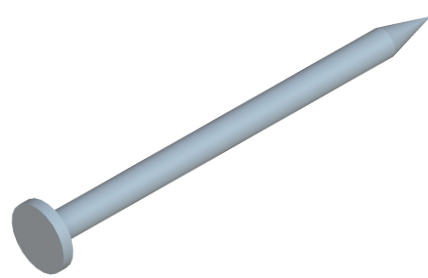
P60 Fondo
562x277

P61 Fondo
Puerta 831x323

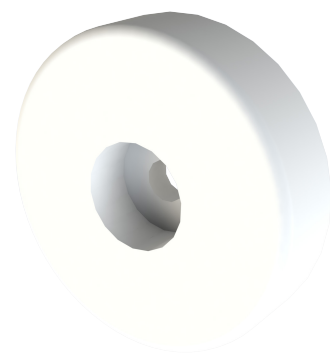


Medidas:

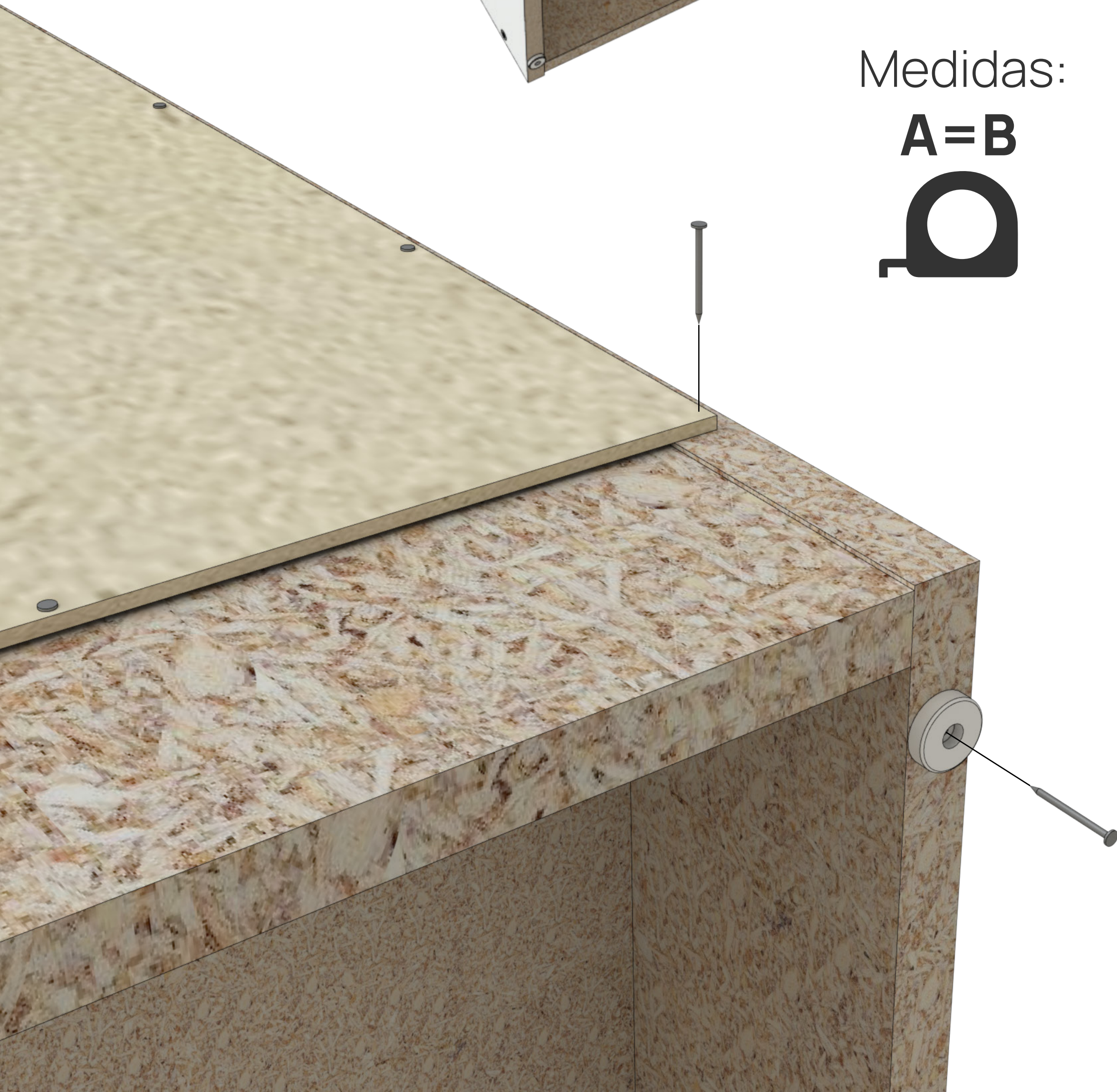
A=B



H6
Clavo



H7
Base plástica

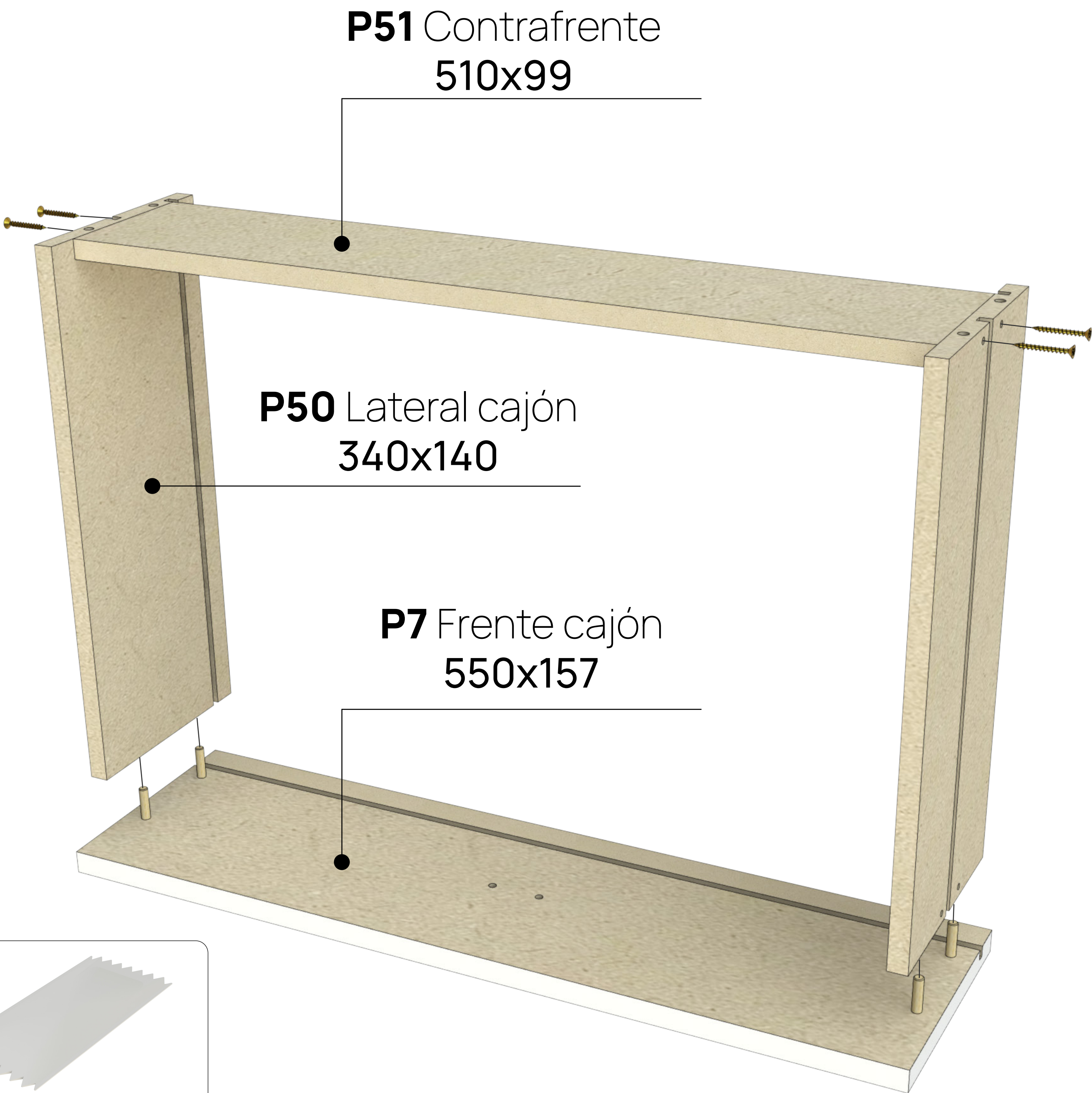




Armado de cajones

Vincular Laterales de Cajón con Contrafrente y Frente. Encolar perforaciones de tarugos.

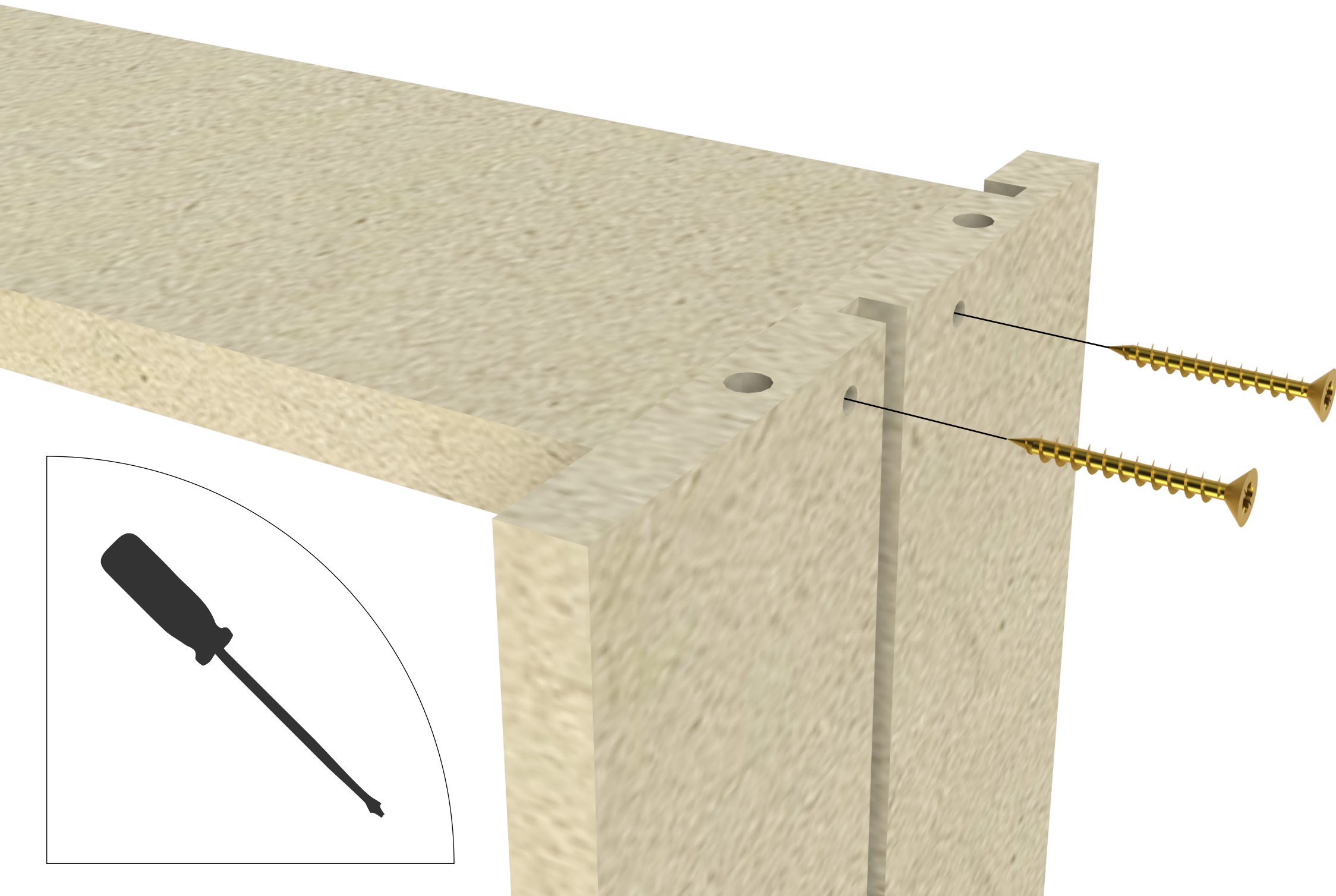
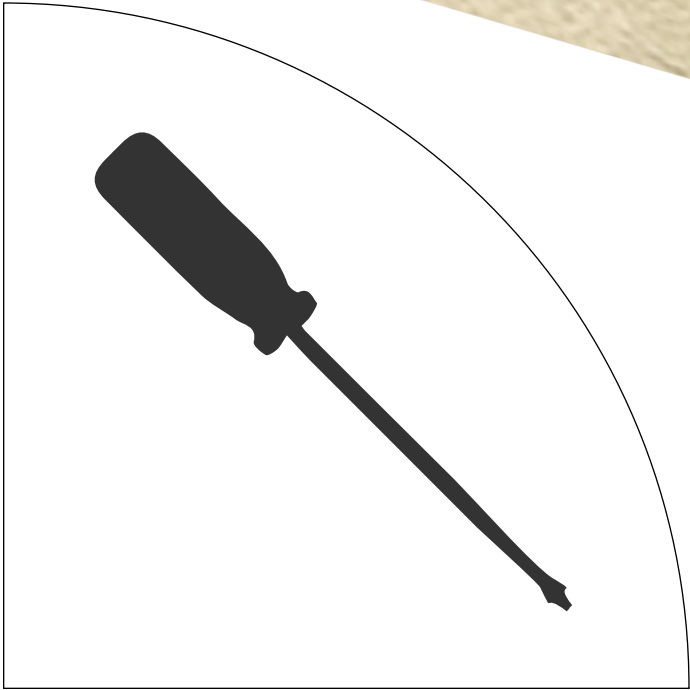
08



H3
Sachet cola

H2 Tarugo
6x30

H8 Tornillo
3,5x30



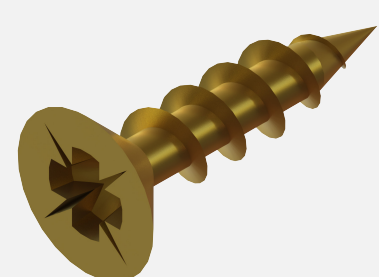
Colocar escuadras

Colocar 2 escuadras plásticas por cada cajón.

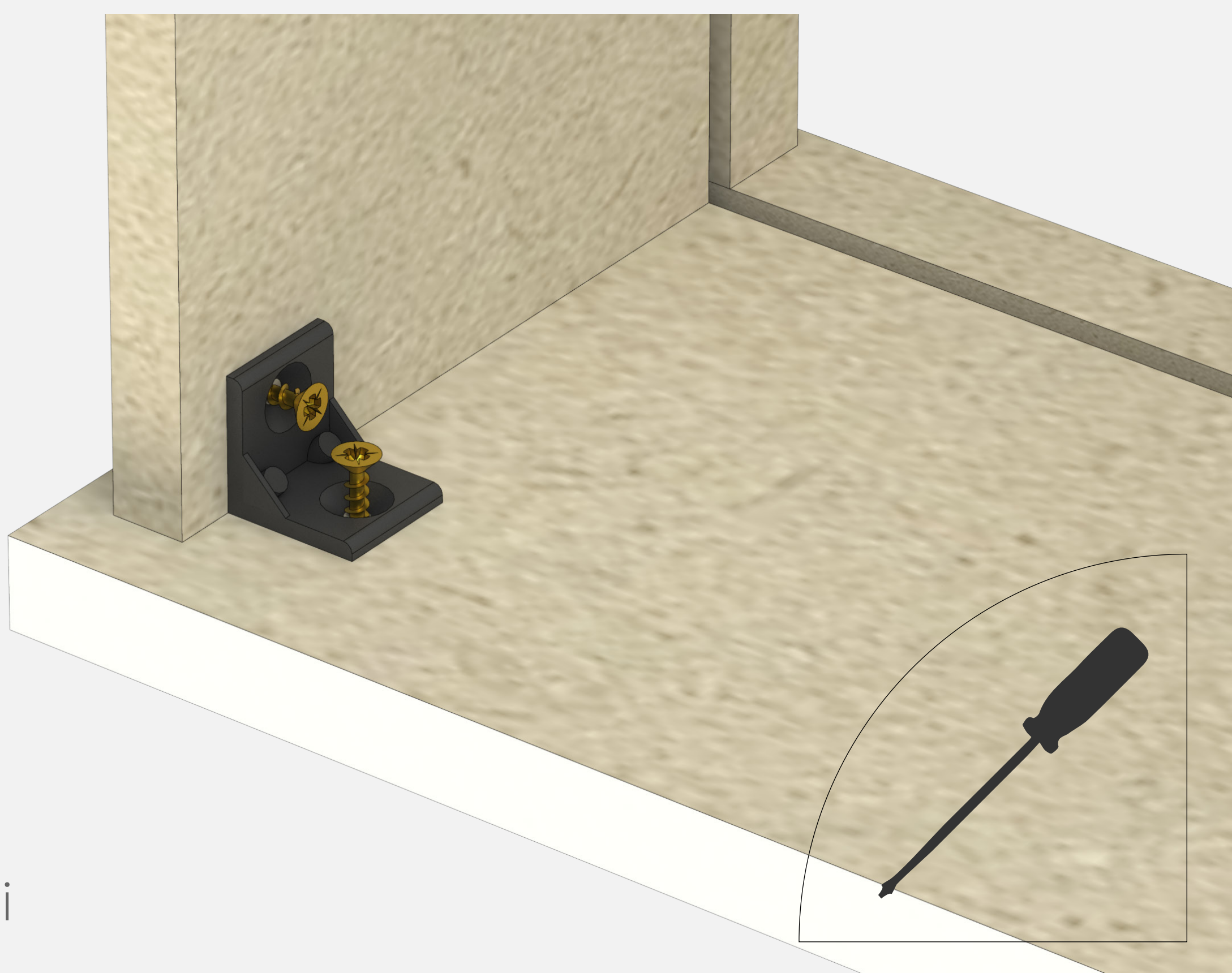
09



H9 Escuadra
plástica



H10
Tornillo 3.5x15





Colocar fondo cajón

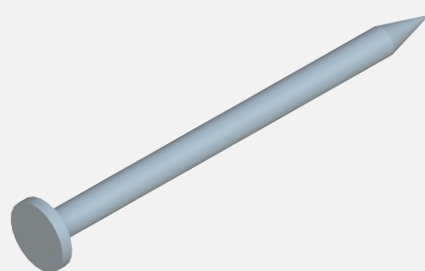
Deslizar **Fondo** en ranura y luego clavar Fondo con Contrafrente.

10

P51 Contrafrente



P9 Fondo cajón 522x347



H6
Clavo

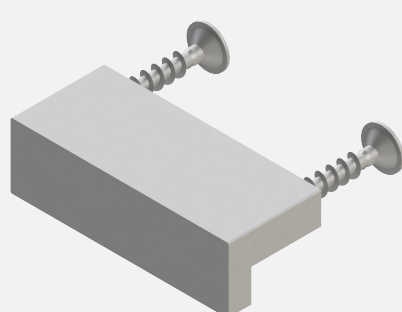


Colocar tirador

Colocar Tirador Bigfer en frente de cajones.

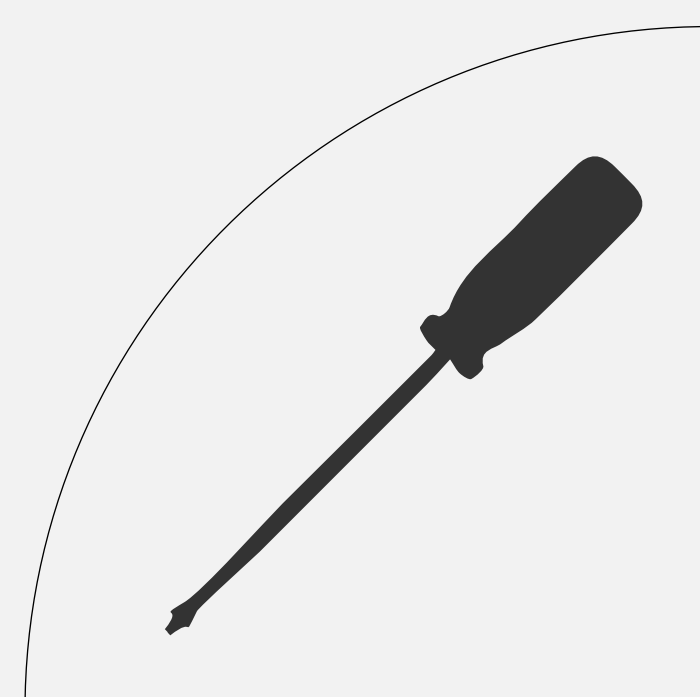
11

P9 Frente cajón 550x157



H11

Tirador 32 Bigfer
+ tornillos





Colocar bisagras

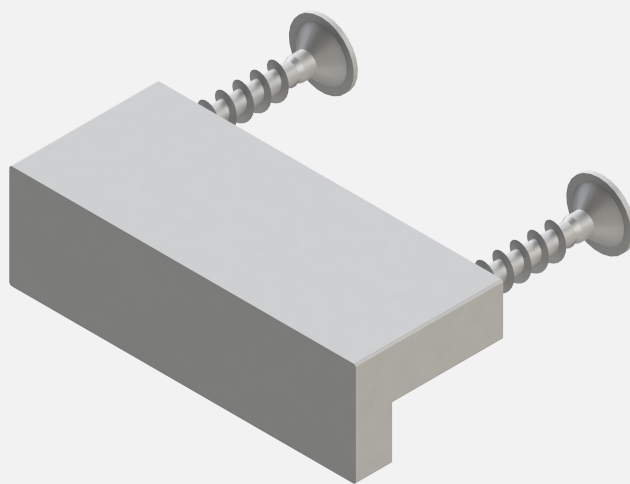
Colocar 2 bisagras en la puerta.

Cada bisagra se vincula con 2 tornillos 3,5x15

12

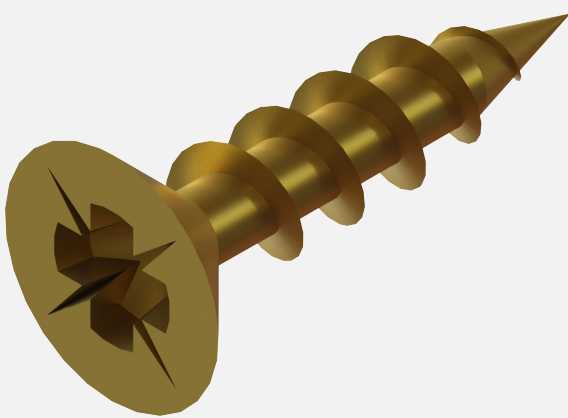
H11 Tirador 32 Bigfer

P8 Puerta 801x317

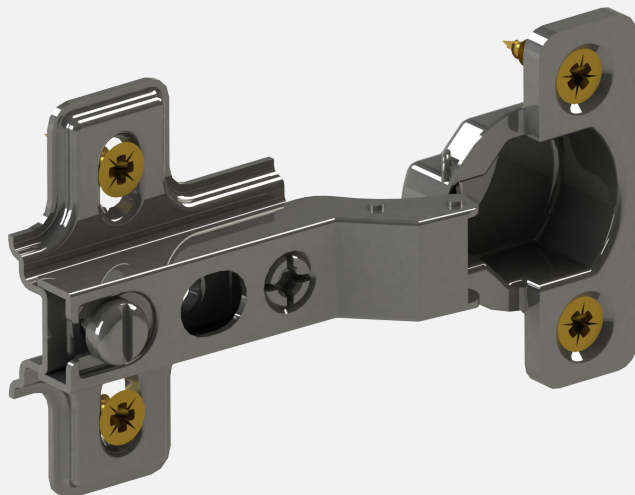


H11

Tirador 32 Bigfer



H10 Tornillo
3,5 x 15



H12 Bisagra 26
codo 9



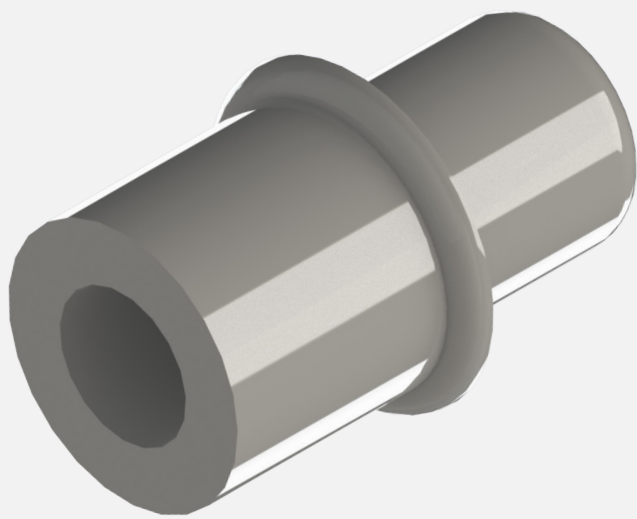


Colgar puerta

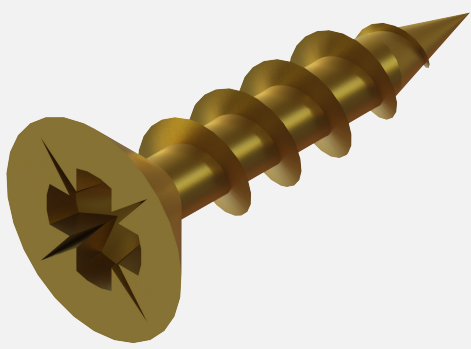
Colgar **Puerta** utilizando tornillos 3,5x15.
Colocar estante móvil.

13

P11 Estante móvil
304x290



H13 Soporte
de estante



Disfrutá tu cómoda



mosconi_home

www.mosconi.com.ar

