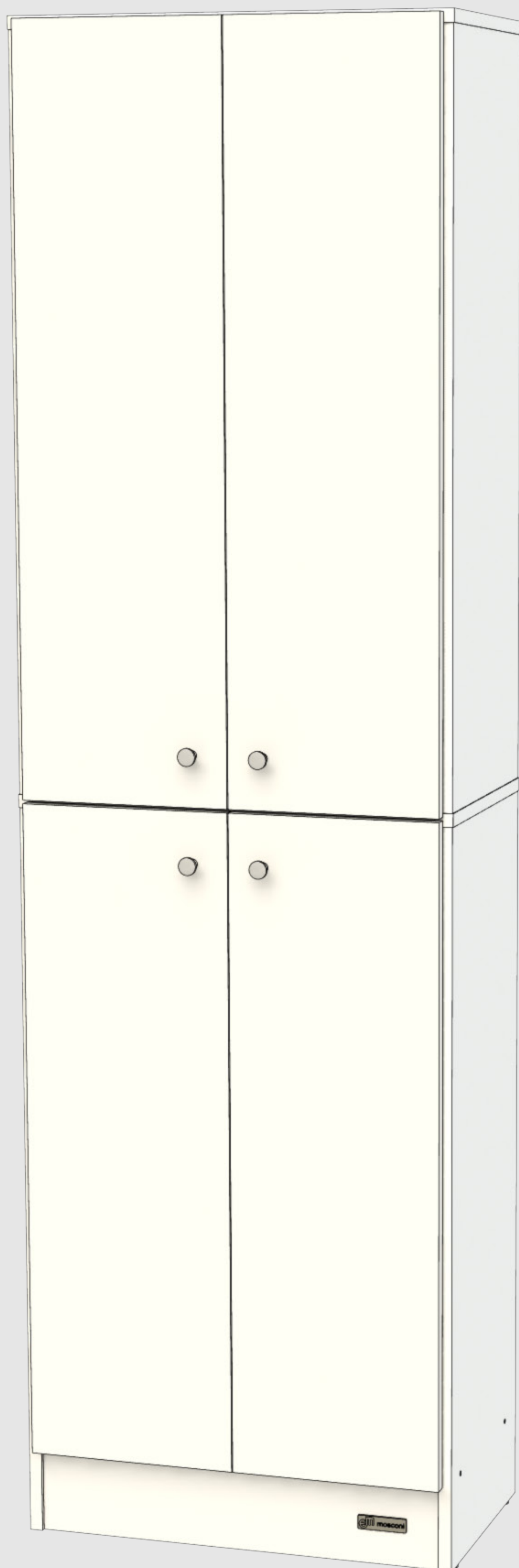




DESPENSERO
4 PUERTAS

Seguí los
pasos
y armá tu
despensero

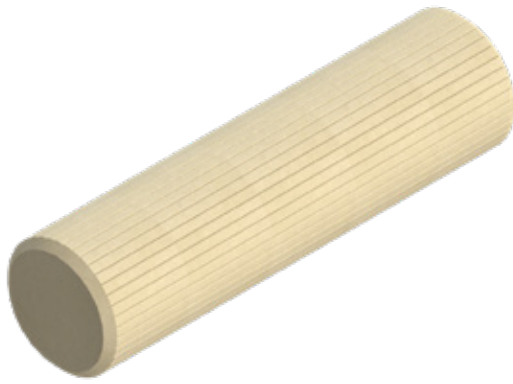
LOTE 1



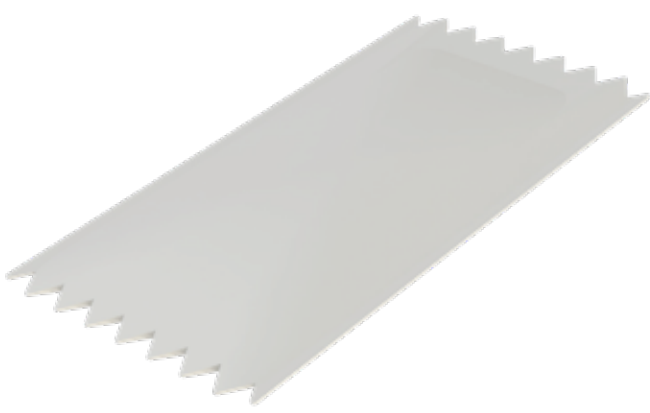
#ExperienciaMosconi



Herrajes



H1
Tarugo
6x30
8 ud.



H2
Cola
vinílica
1 ud.



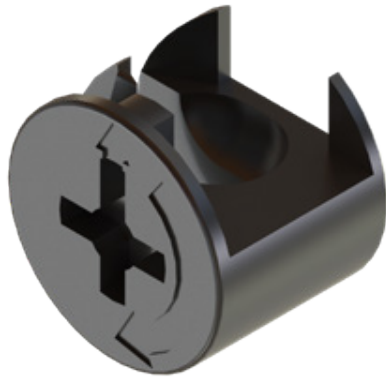
H3
Marca
empresarial
1 ud.



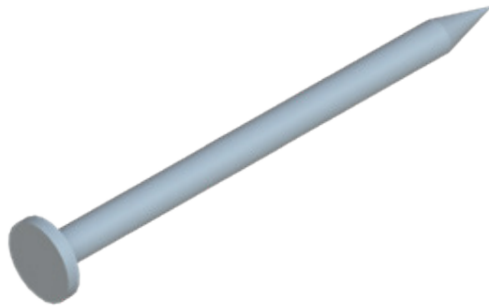
H4
Tornillo
confirmat 5x50
12 ud.



H5
Perno
minifix
4 ud.



H6
Casoleta
minifix
4 ud.



H7
Clavo
1 bolsa.



H8
Varilla H
sup. 835
1 ud.



H9
Varilla H
inf. 725
1 ud.



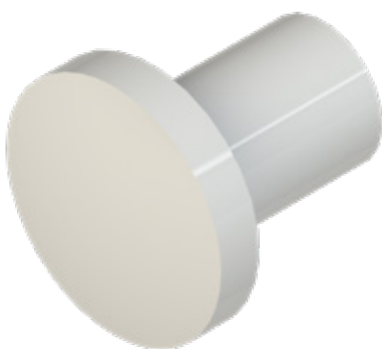
H10
Base
plástica
1 ud.



H11
Bisagra
codo 9
8 ud.



H12
Tornillo
3,5x15
32 ud.



H13
Tirador
plástico
4 ud.



H14
Tornillo
3,5x30
4 ud.

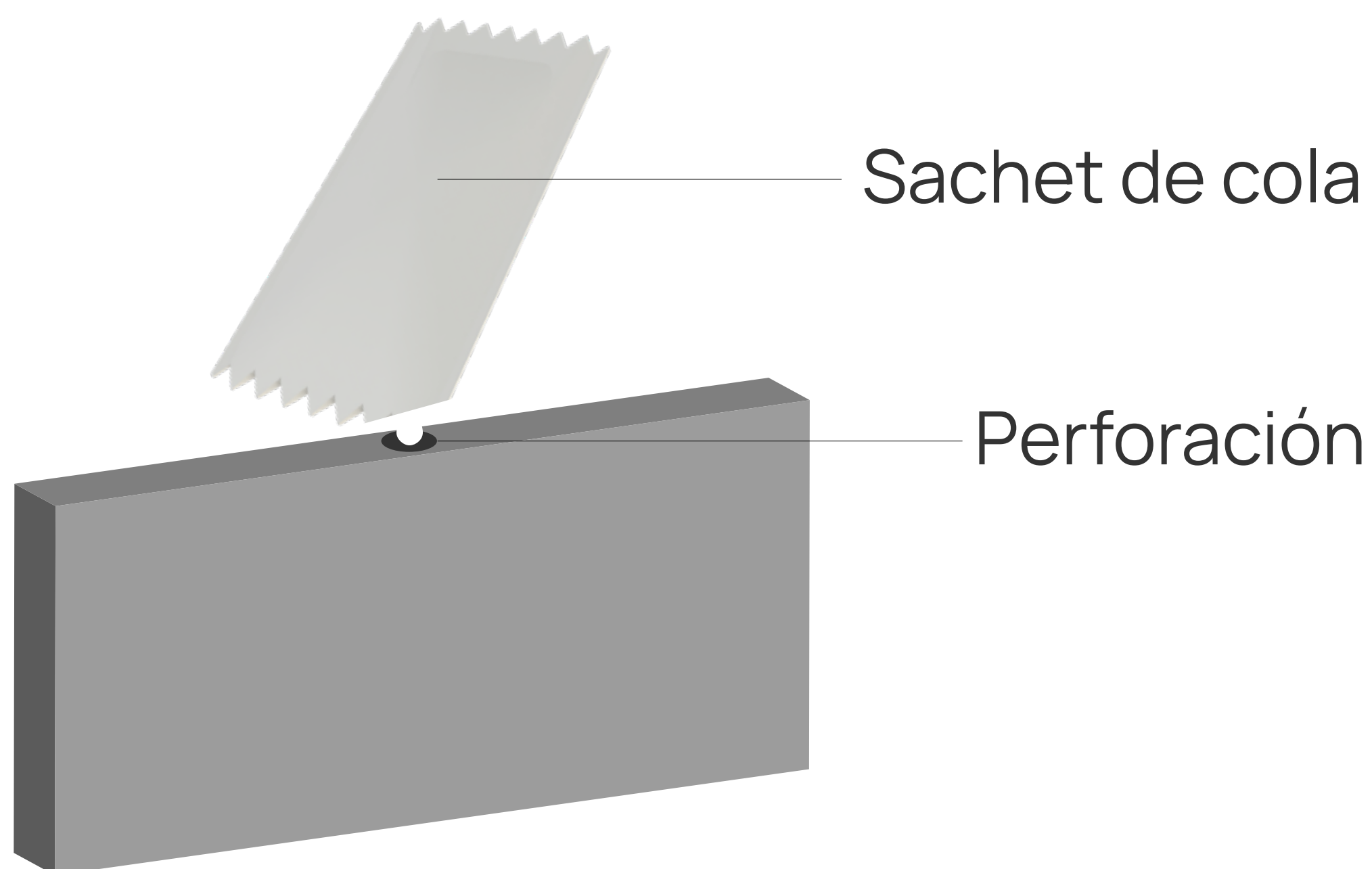


H15
Soporte
estante
12 ud.

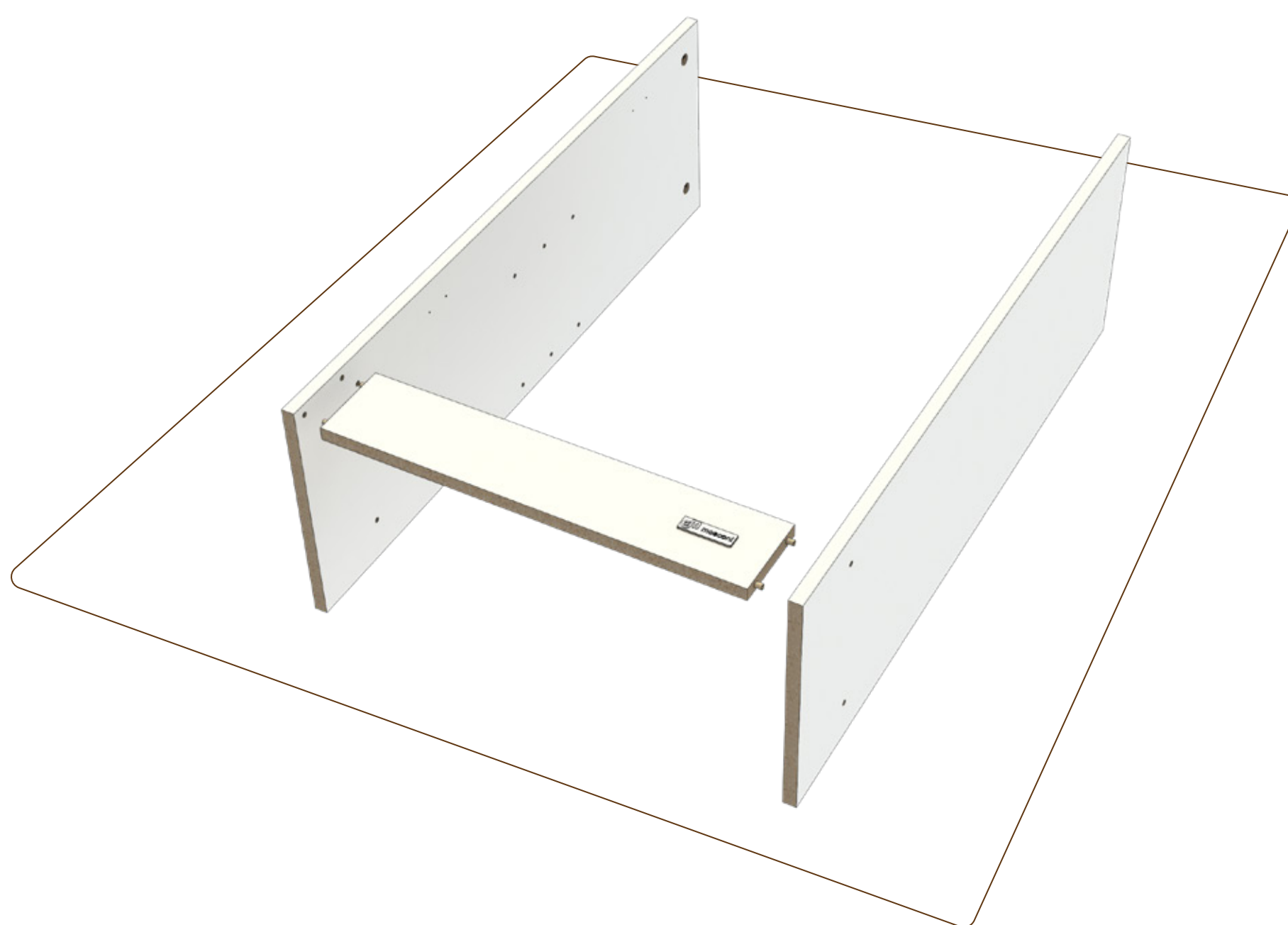
¿Qué herramientas necesito?



¡Recordá encolar las perforaciones donde van tarugos!



Para cuidar las piezas, armá el vajillero sobre la caja.





Piezas

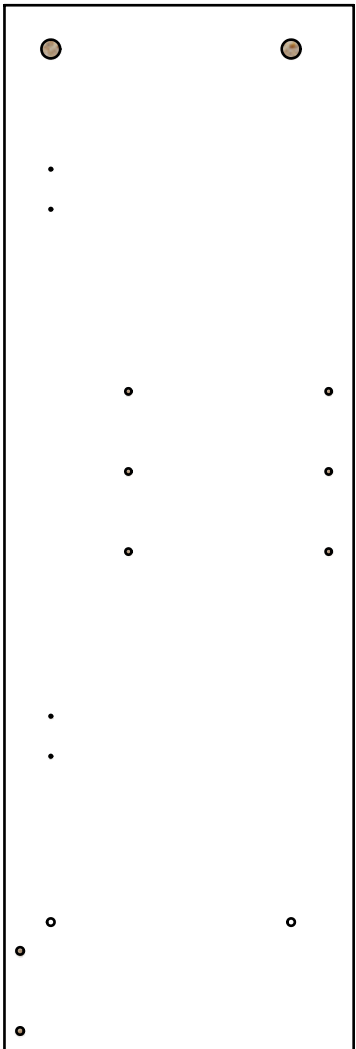
P1

Zócalo
47x9,5



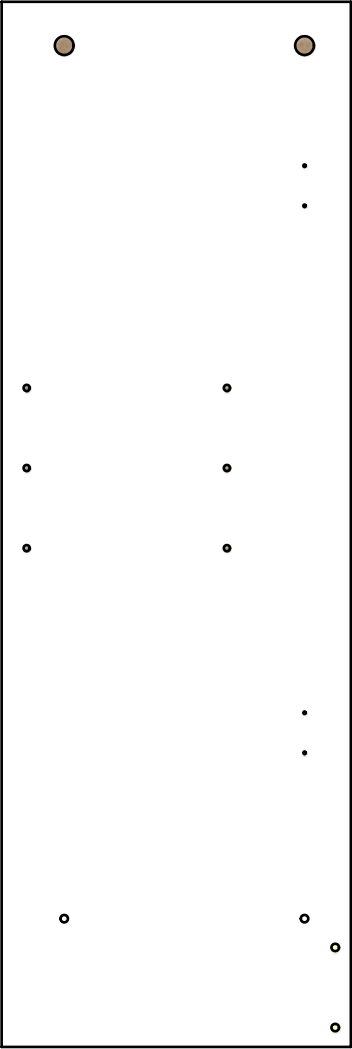
P2

Costado
inf. izq.
83,5x28



P3

Costado
inf. der.
83,5x28



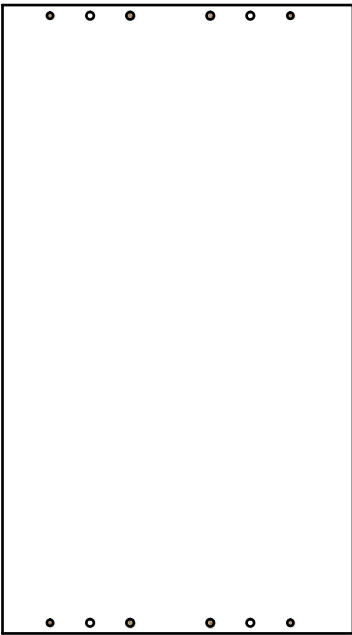
P4

Base
estante
47x28



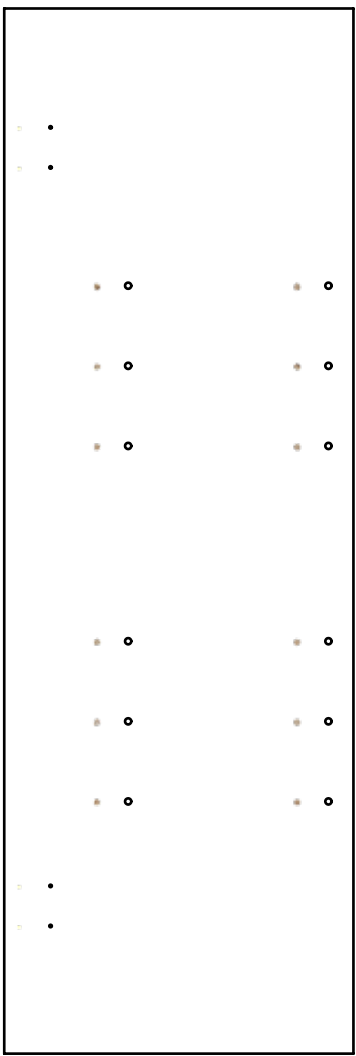
P5

Estante
50x28



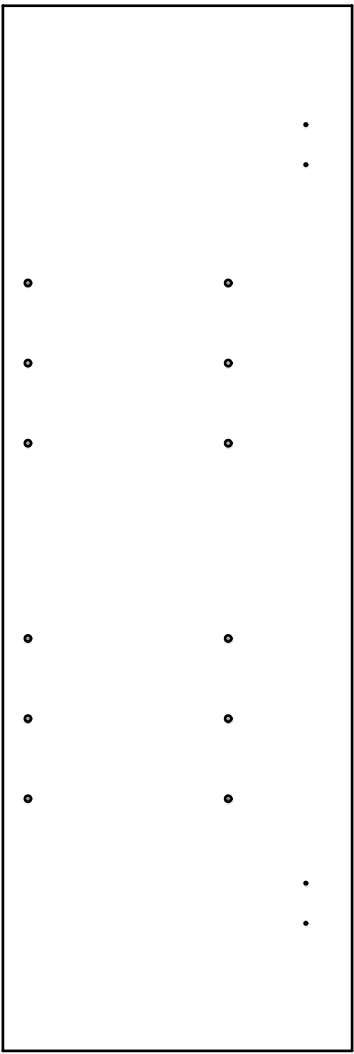
P6

Costado
sup. izq.
83,5x28



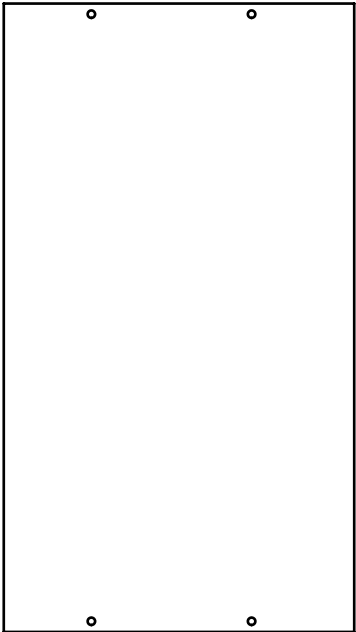
P7

Costado
sup.der.
83,5x28



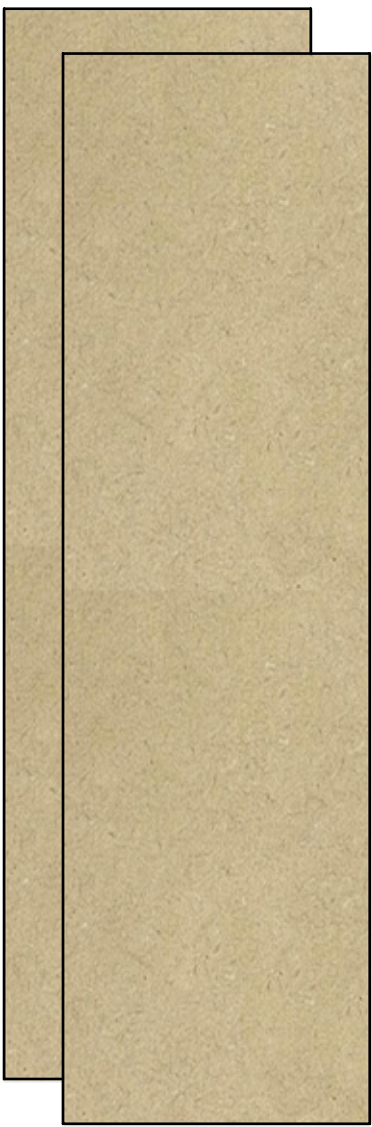
P8

Techo
50x28



P9

Fondo sup.
85,5x24,5



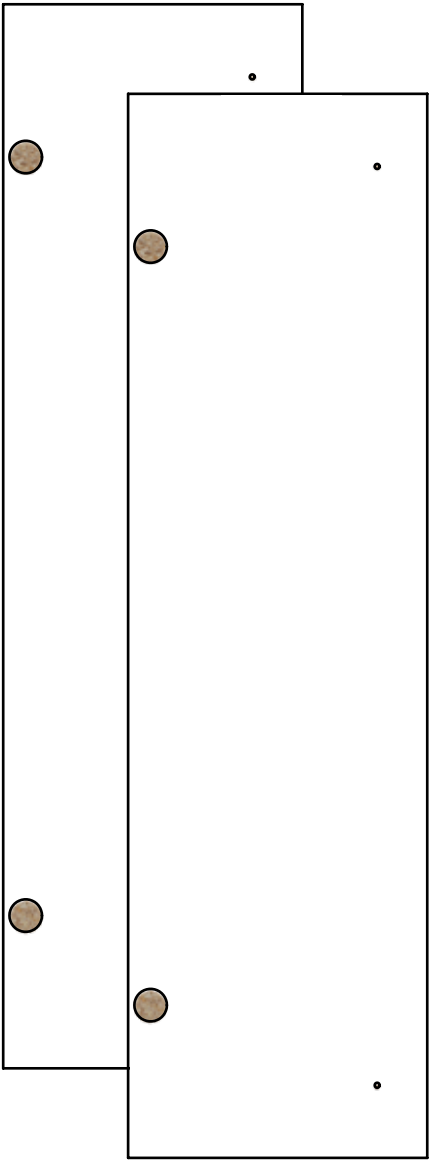
P10

Fondo inf.
74,5x24,5



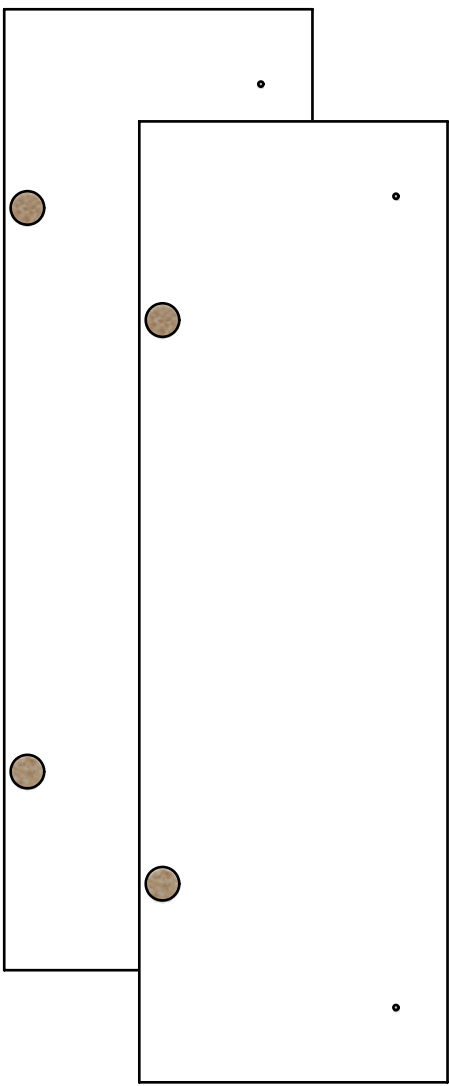
P11

Puerta sup.
85x24



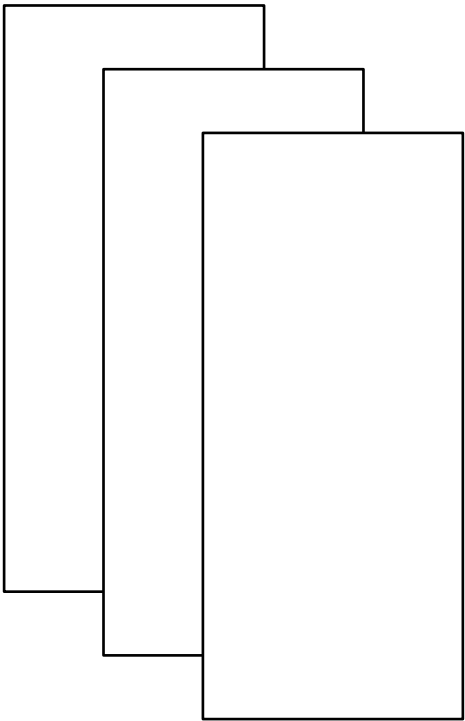
P12

Puerta inf.
74,5x24



P13

Estante móvil
47x21



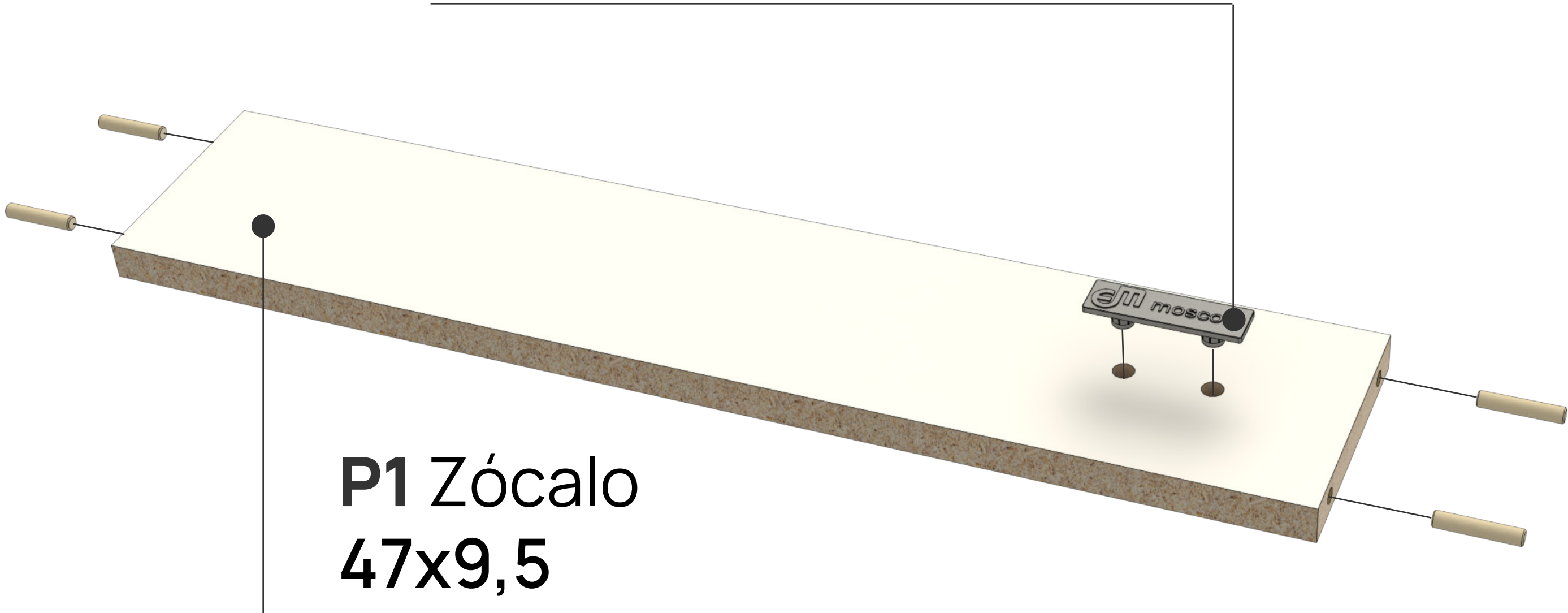


Colocar tarugos

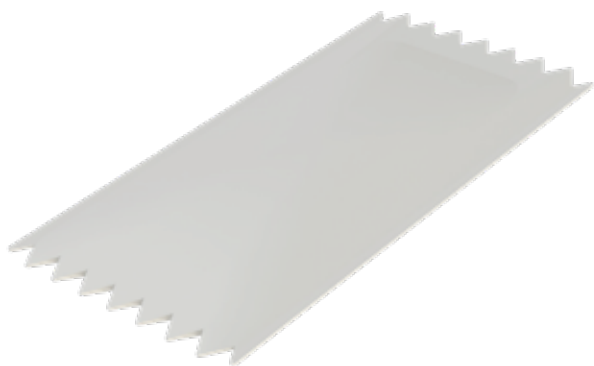
Encolar perforaciones del zócalo y colocar 4 tarugos. Ayudarse con un martillo.

01

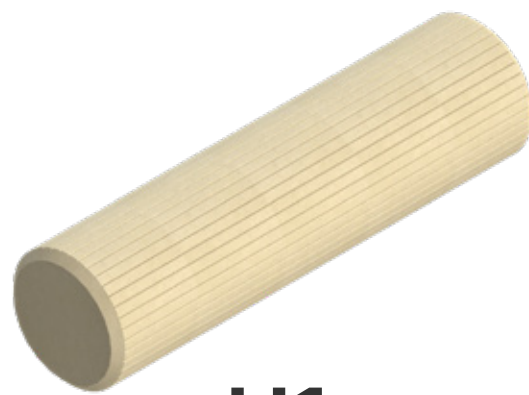
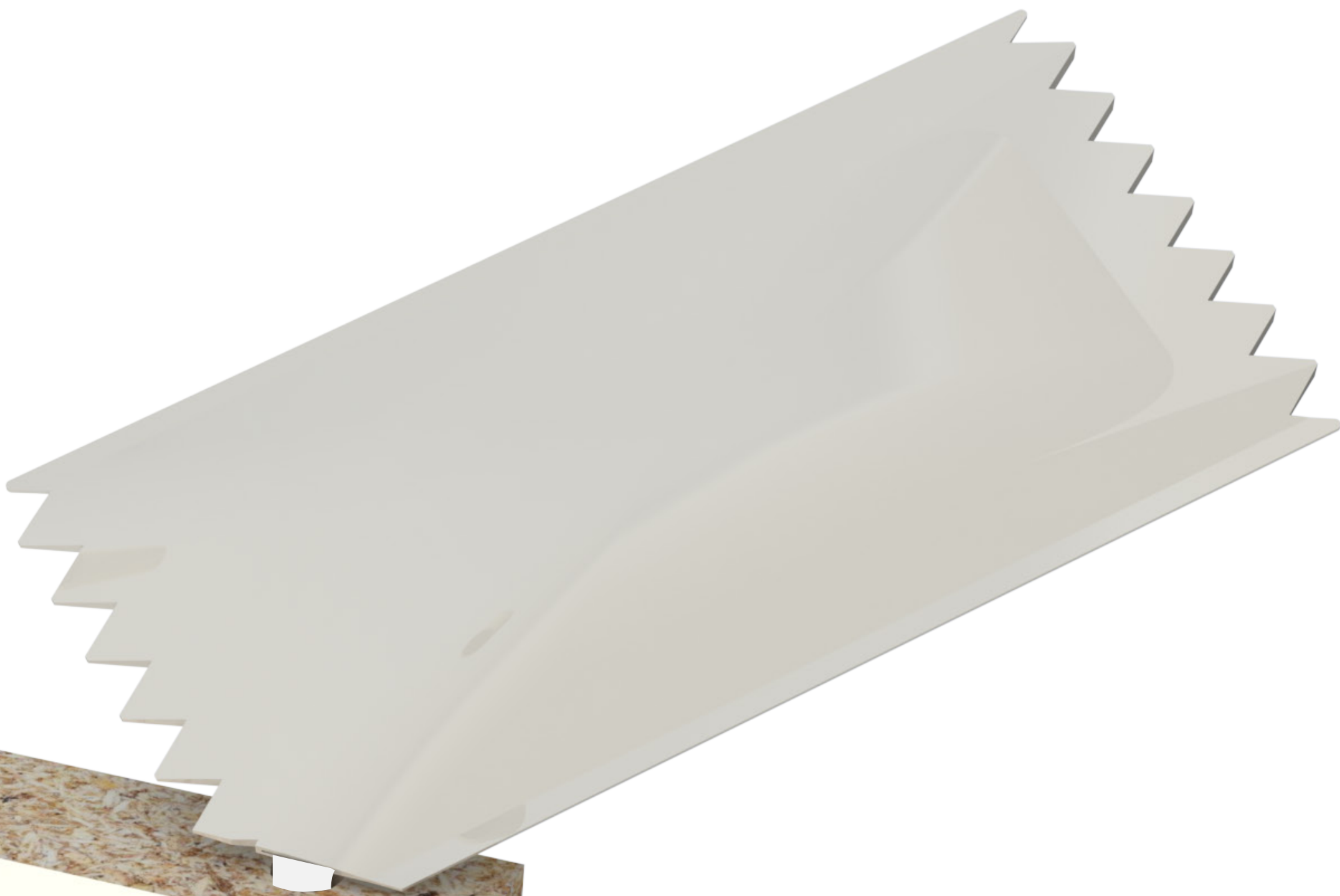
H3 Marca empresarial



P1 Zócalo
47x9,5



H2
Cola vinílica



H1
Tarugo 8x30





Vincular zócalo

Encolar las 4 perforaciones de los costados y vincular las 3 piezas.

02

P2 Costado
inf. IZQ. 83,5x28

H2
Cola vinílica

P3 Costado
inf. DER. 83,5x28

P1 Zócalo

H1
Tarugo 8x30



Colocar base

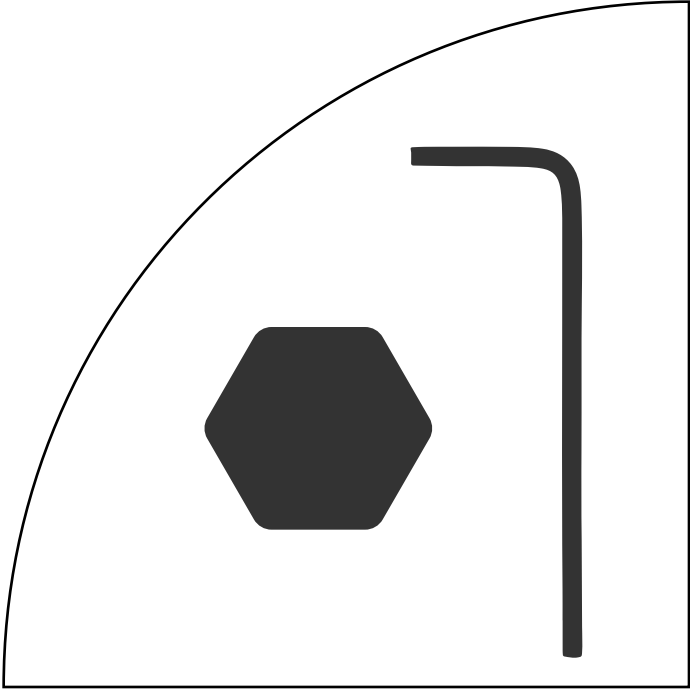
Vincular base/costados por medio de 4 tornillos confirmat.

03

P4 Base estante 47x28



H4
Tornillo
confirmat



Armado módulo superior

Vincular estante a los dos costados superiores con 4 tornillos confirmat.

04

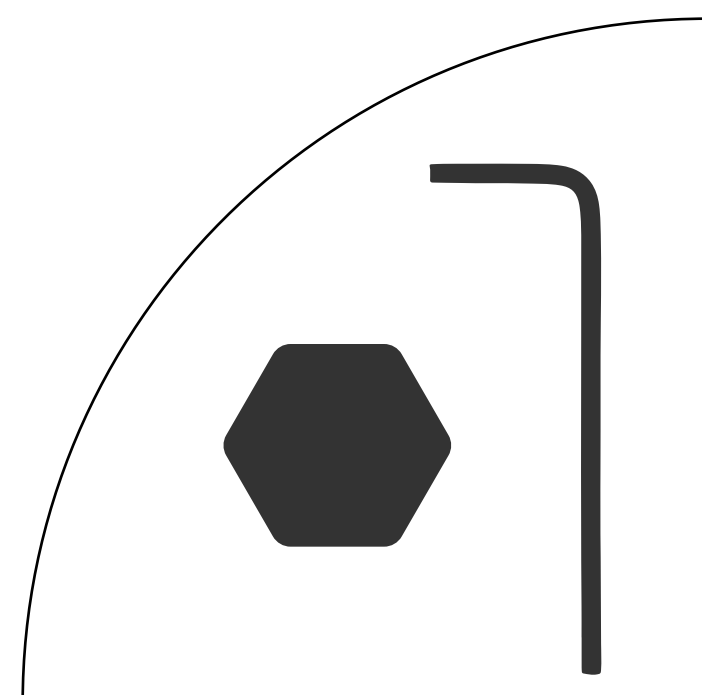
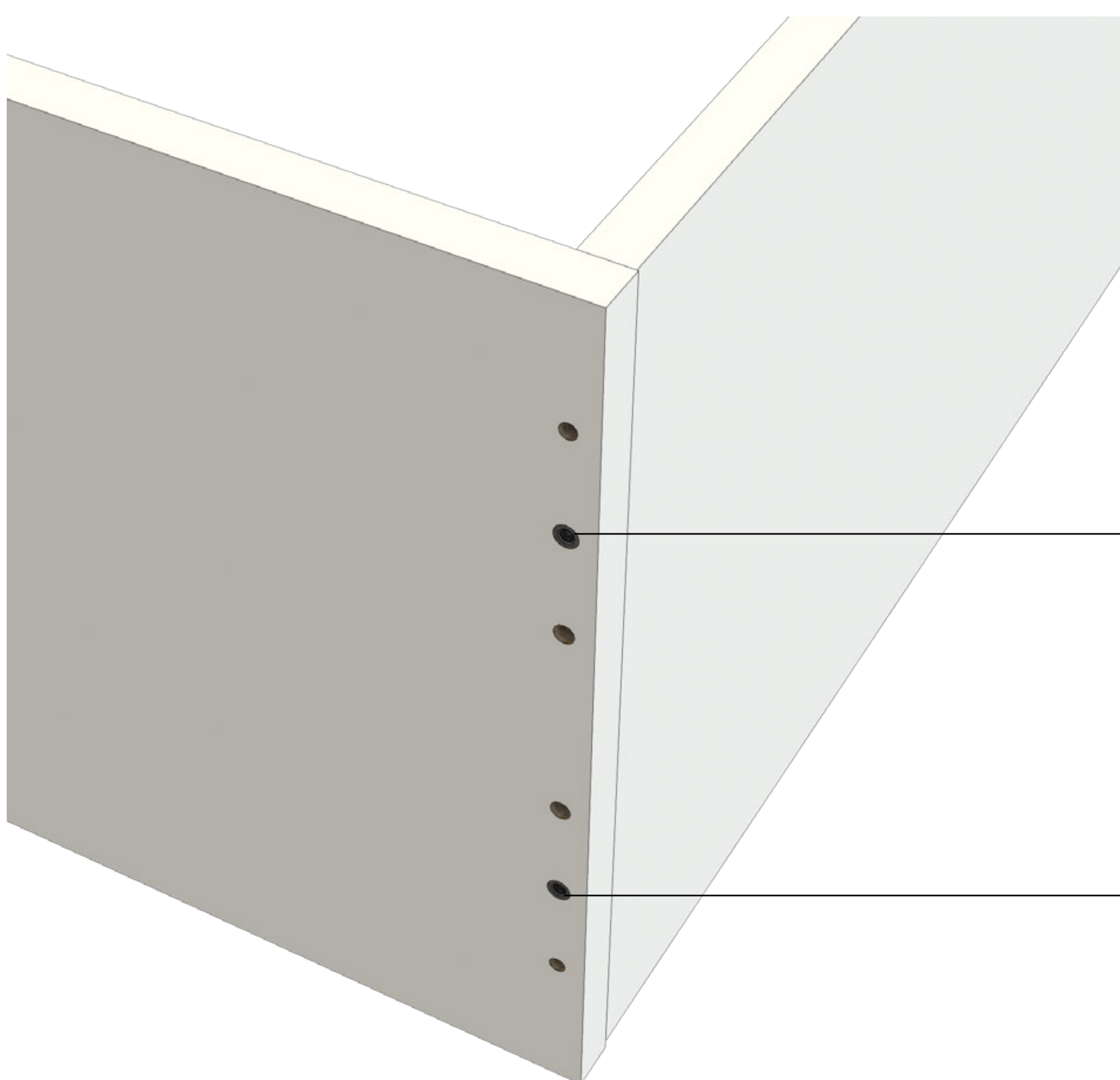
P6 Costado sup. IZQ.
83,5x28

P5 Estante
50x28

P7 Costado
sup. DER.
83,5x28



H4
Tornillo
confirmat

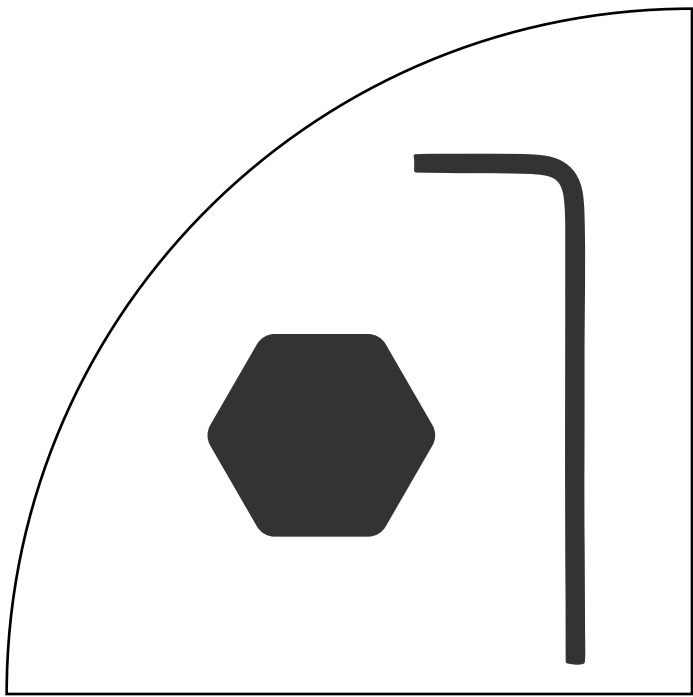
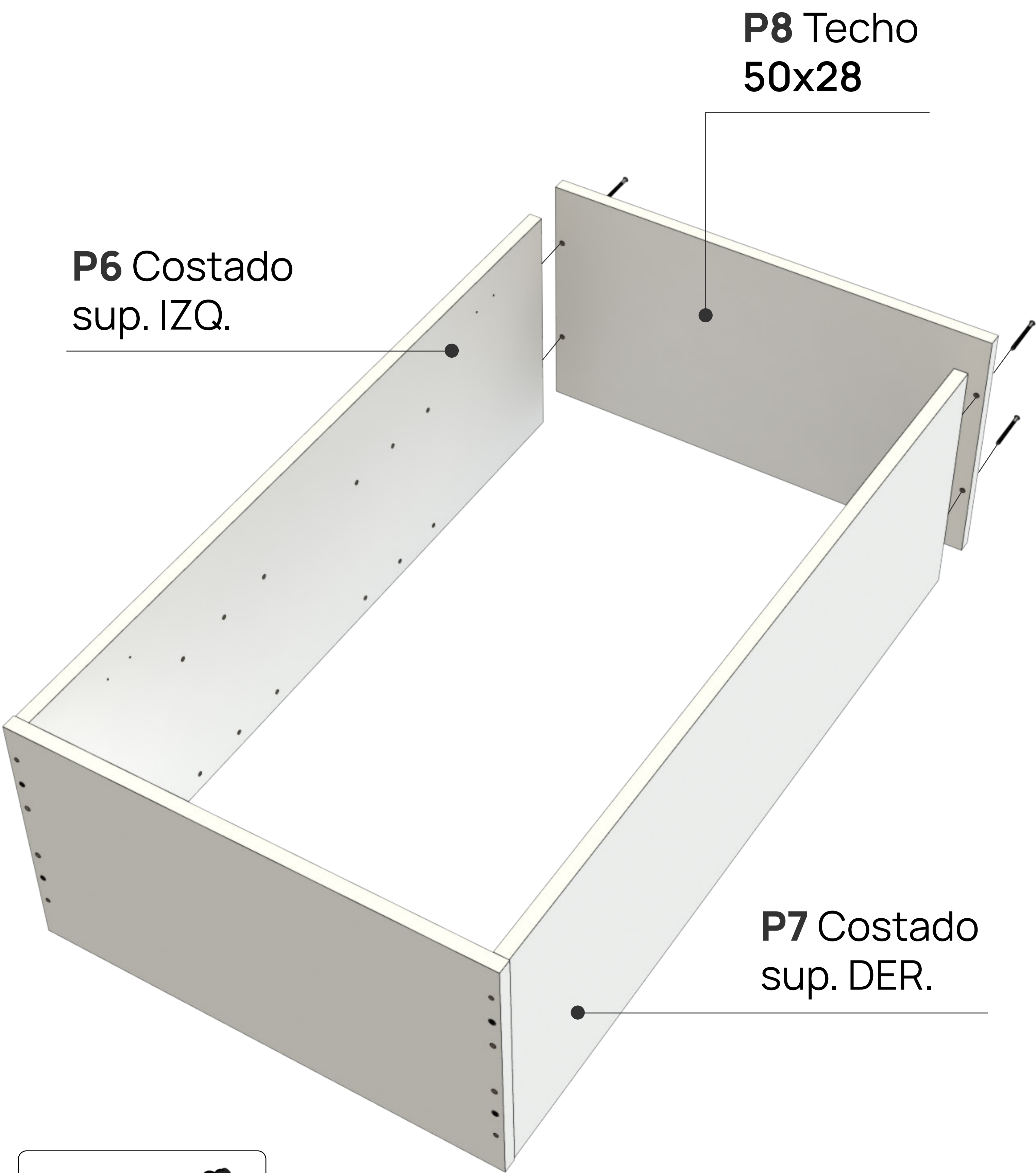




Vincular techo

Mediante 4 tornillos confirmat unir
techo con los costados superiores.

05

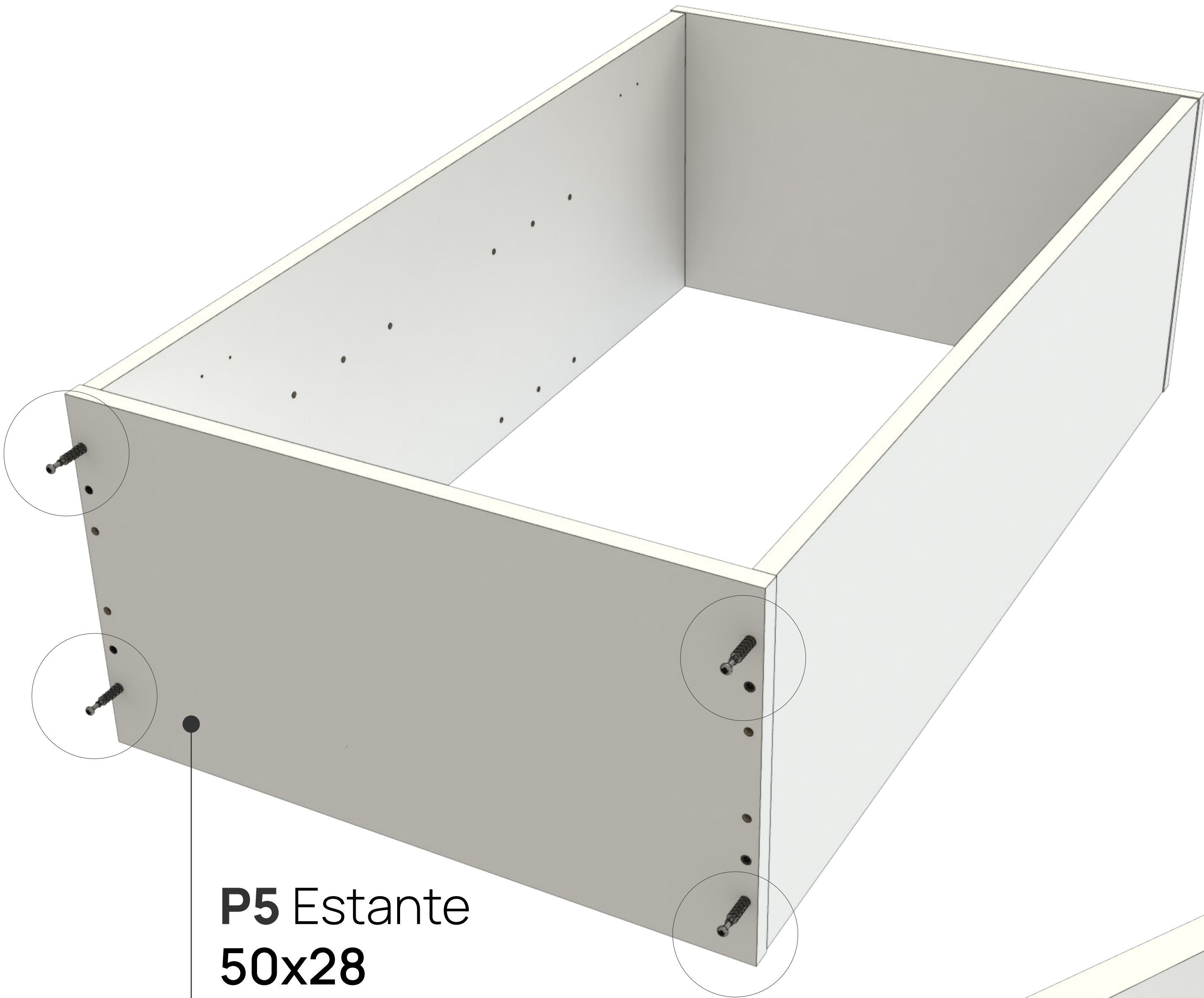




Colocar Perno minifix

06

Con un destornillador phillips, colocar 4 pernos minifix en la pieza estante.



P5 Estante
50x28



H5
Perno minifix

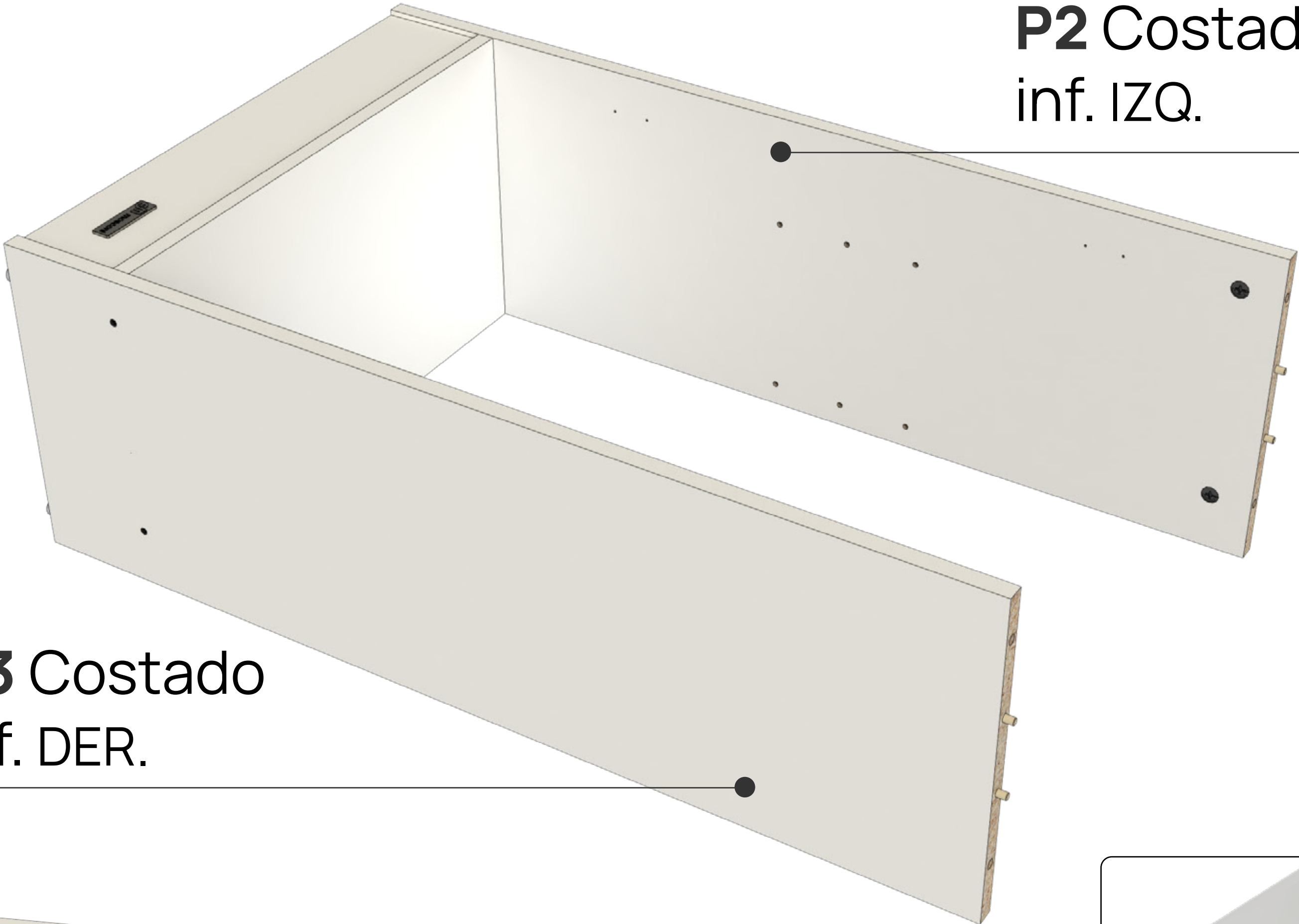




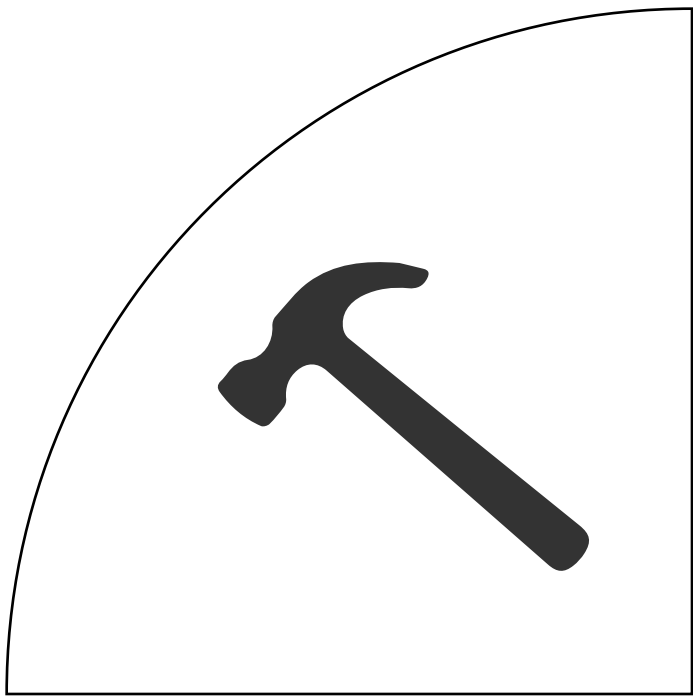
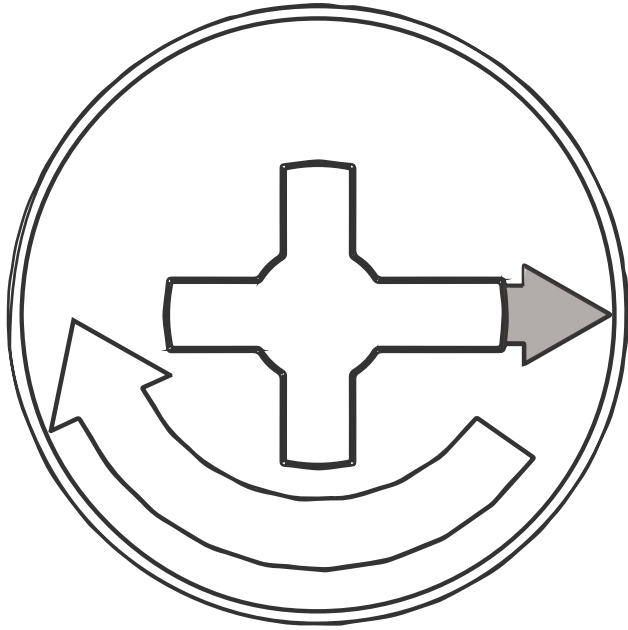
Colocar tarugos y casoletas

07

Colocar 4 tarugos y 4 casoletas minifix, en los dos costados inferiores,



Importante
Colocar casoleta con la flecha apuntando hacia la perforación

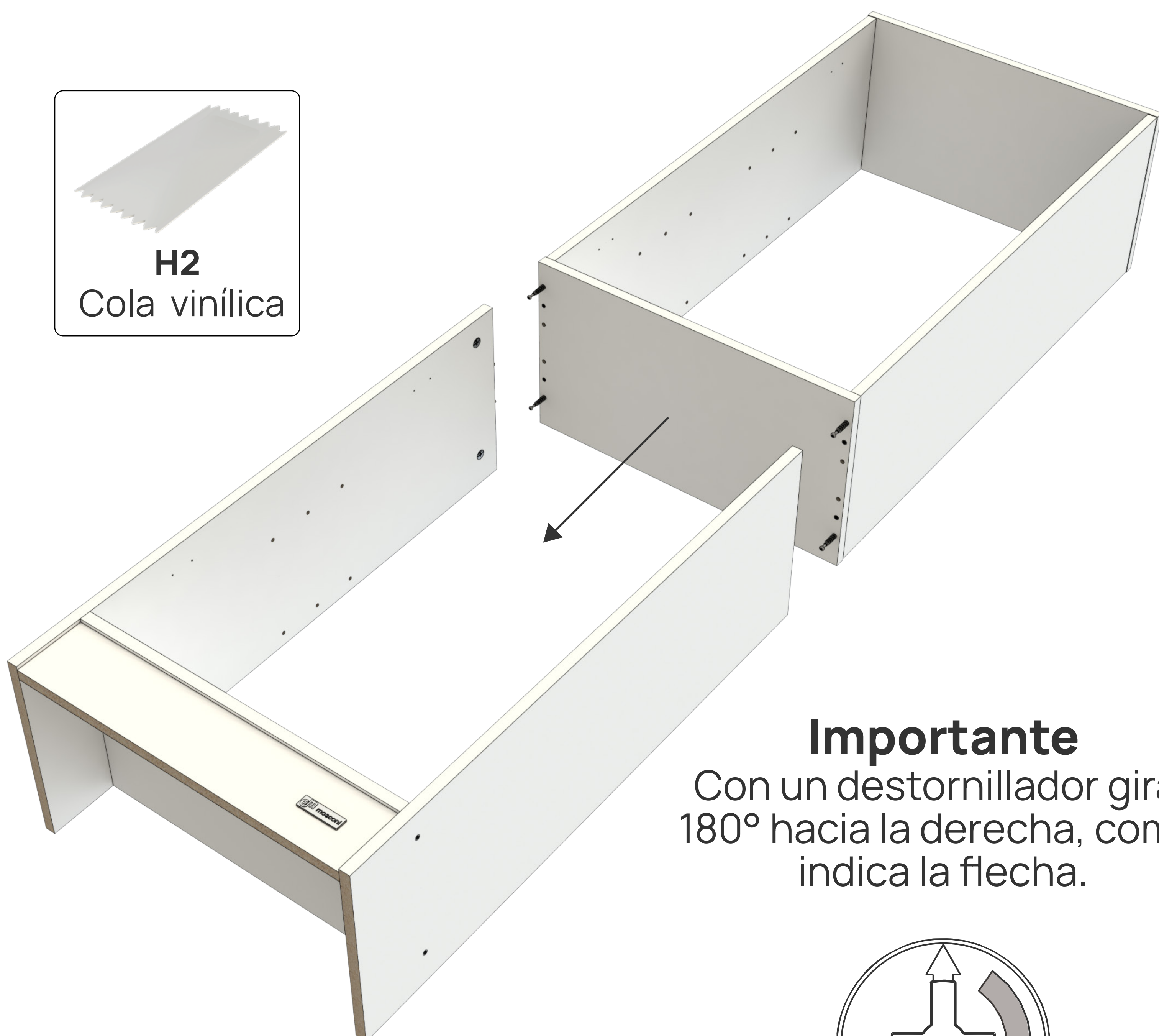




Vincular módulos inf y sup.

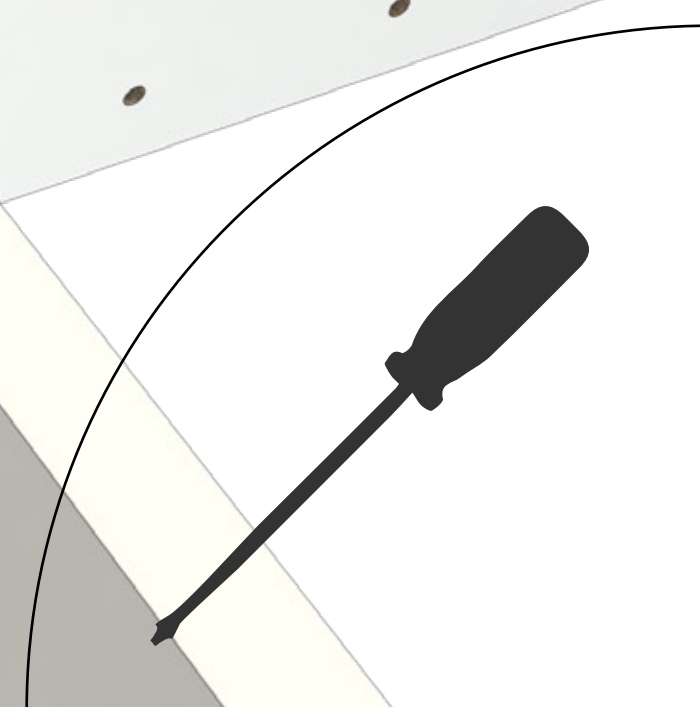
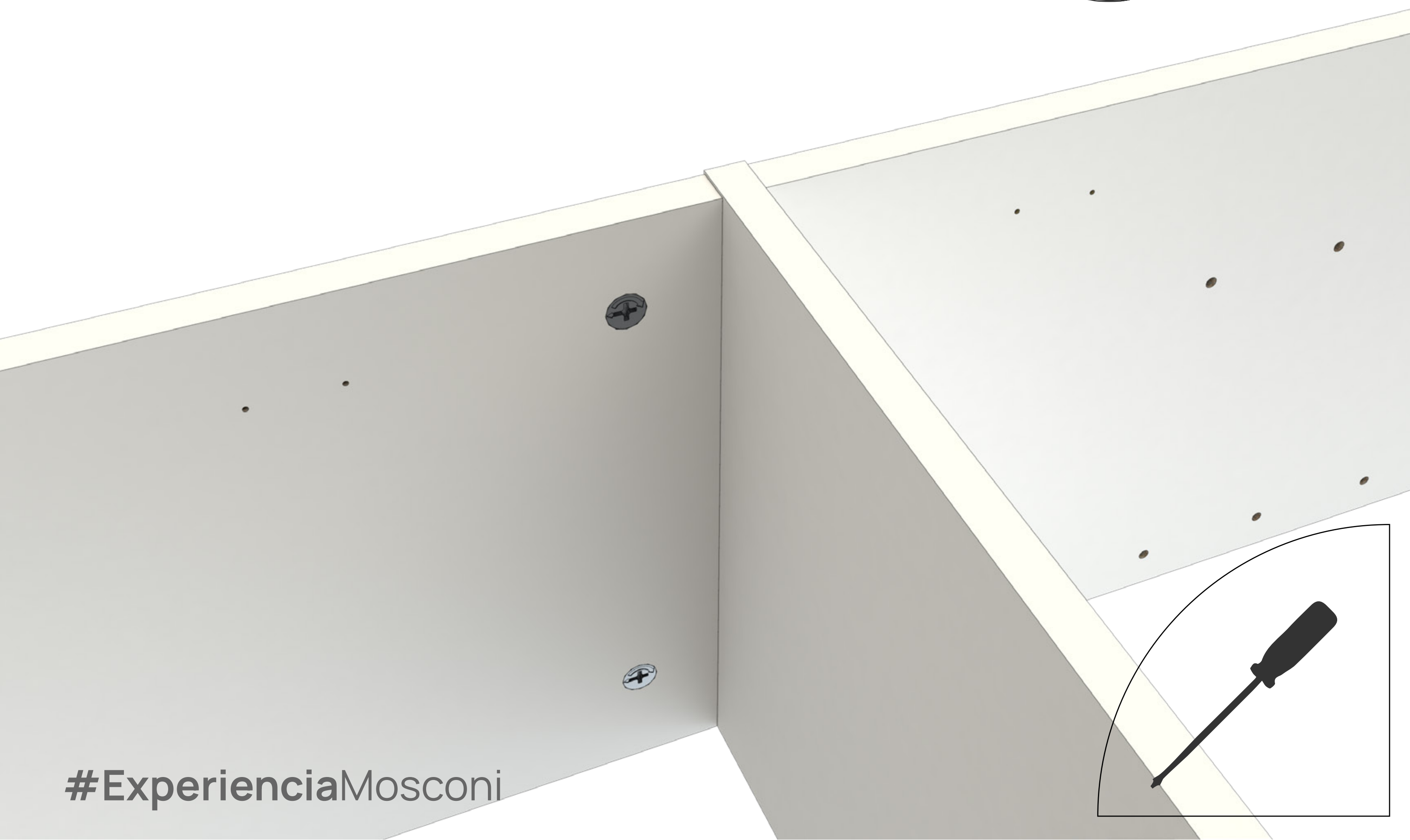
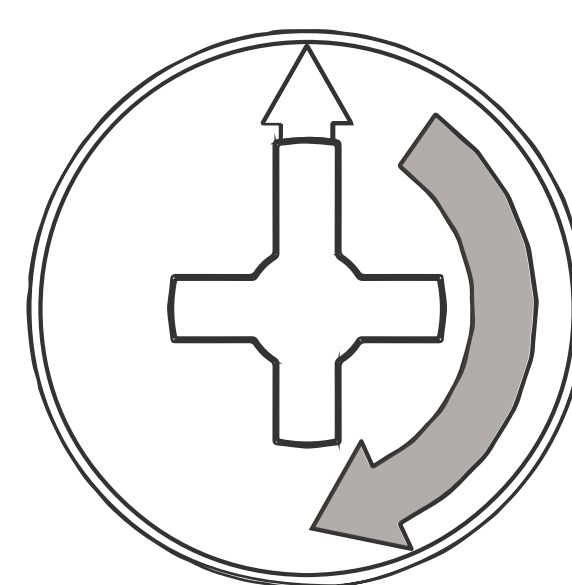
08

Unir con los 4 tarugos y ajustar las 4 casoletas minifix girando 180°.



Importante

Con un destornillador girar 180° hacia la derecha, como indica la flecha.





Colocar fondos y bases.

Vincular dos fondos con varilla H.
Con un martillo, colocar clavos cada
10 cm aprox.

09



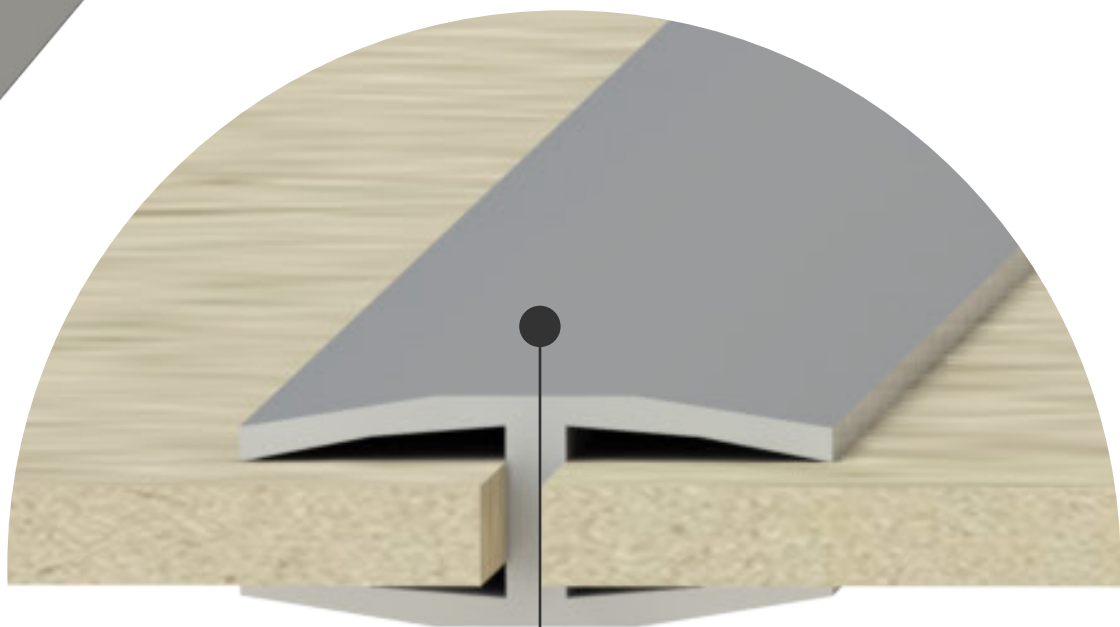
P9 Fondo sup.

MEDIDA
A=B

A

B

P10 Fondo
inf.

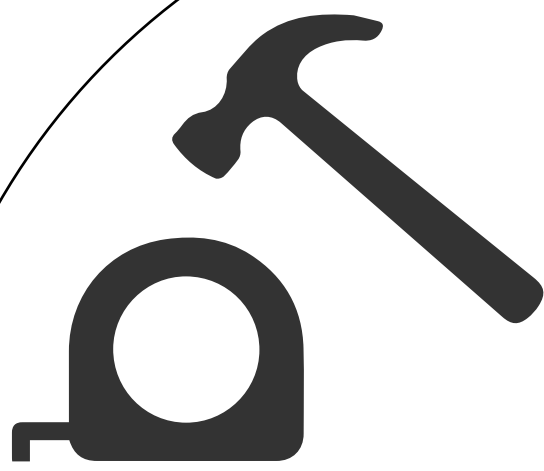


Varilla H



H10

Base plástica





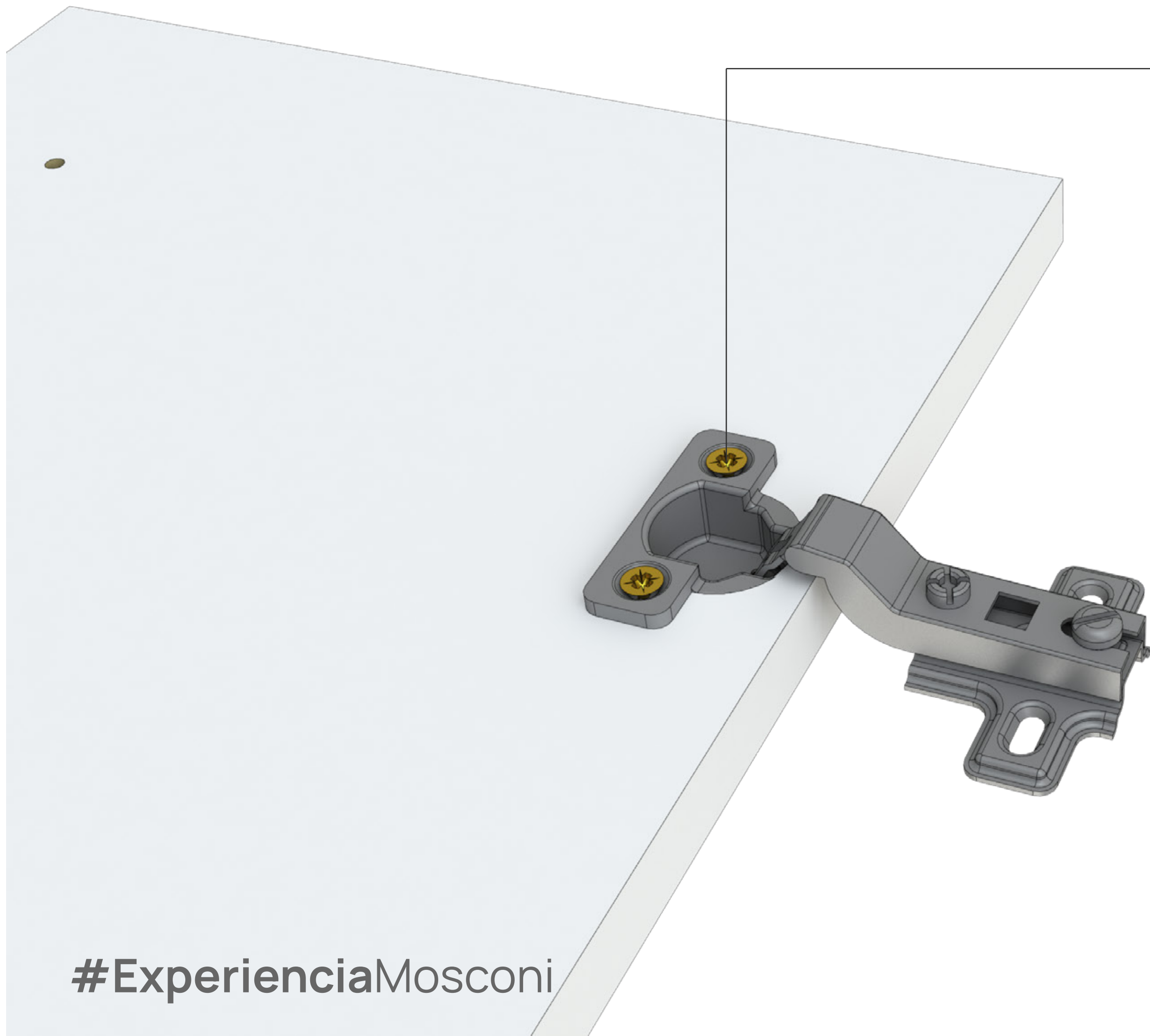
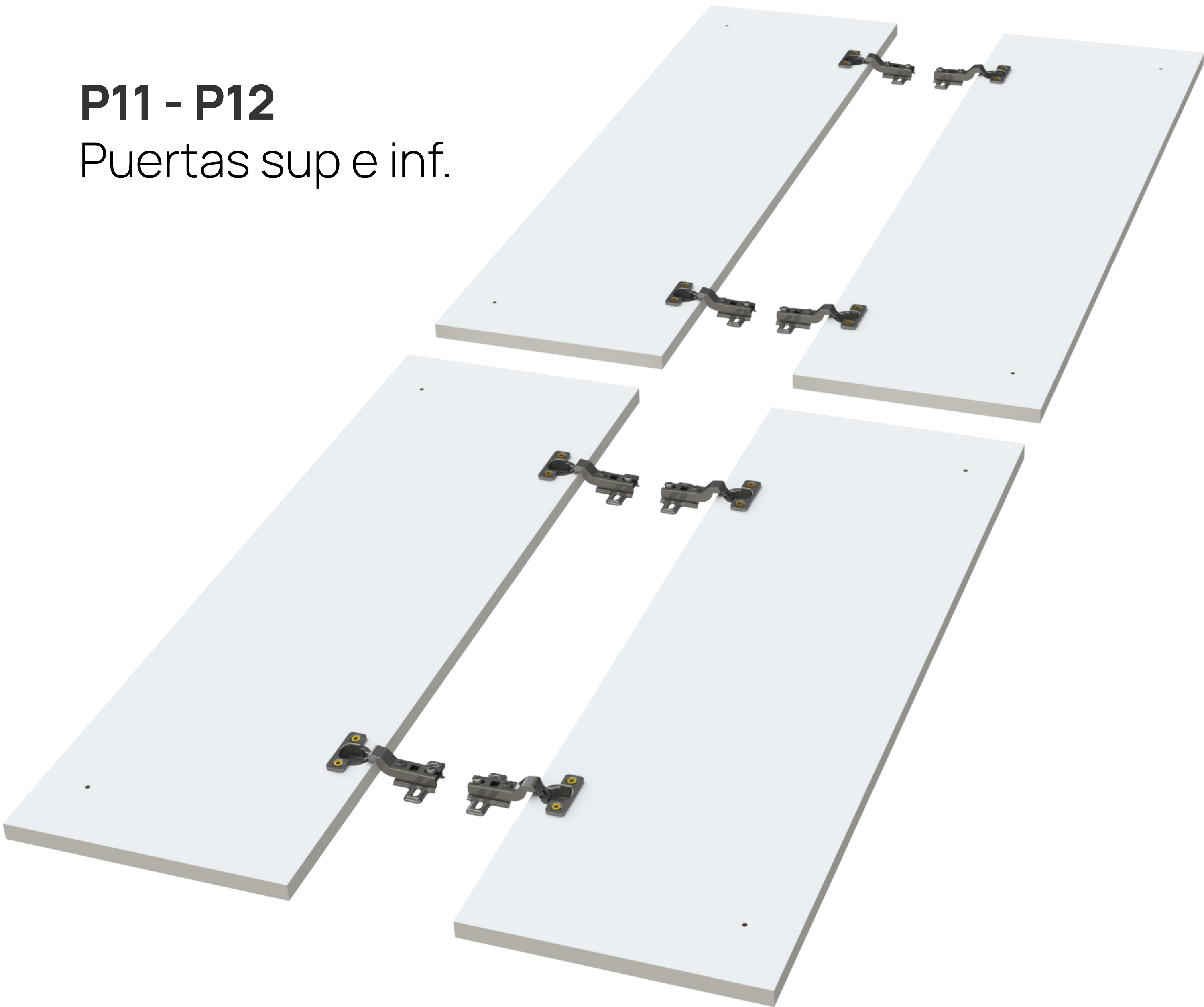
Colocar bisagras

Colocar bisagras en las 4 puertas con tornillos 3,5x15.

10

P11 - P12

Puertas sup e inf.





H12
Tornillo 3,5x15



Colocar y regular puertas

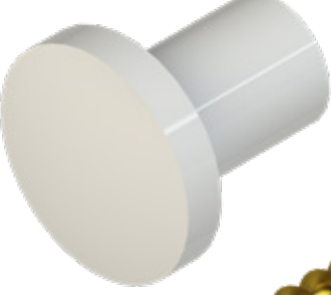
11


Colocar 4 puertas - 4 tiradores plásticos y soportes de estantes metálicos.





H15
Soporte
estante

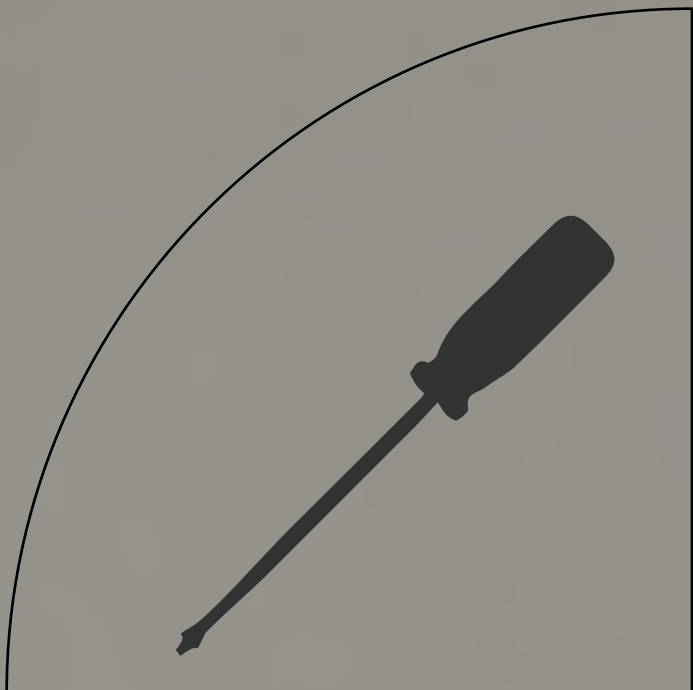
H13



H14

Desplazamiento puerta vertical

Desplazamiento puerta horizontal

Desplazamiento puerta frontal



●●●●●●●●●●

**Colocá los estantes y
disfrutá tu despensero!**

12

